

Monthly report of Brazilian sugar exports

2020/2021 harvest season

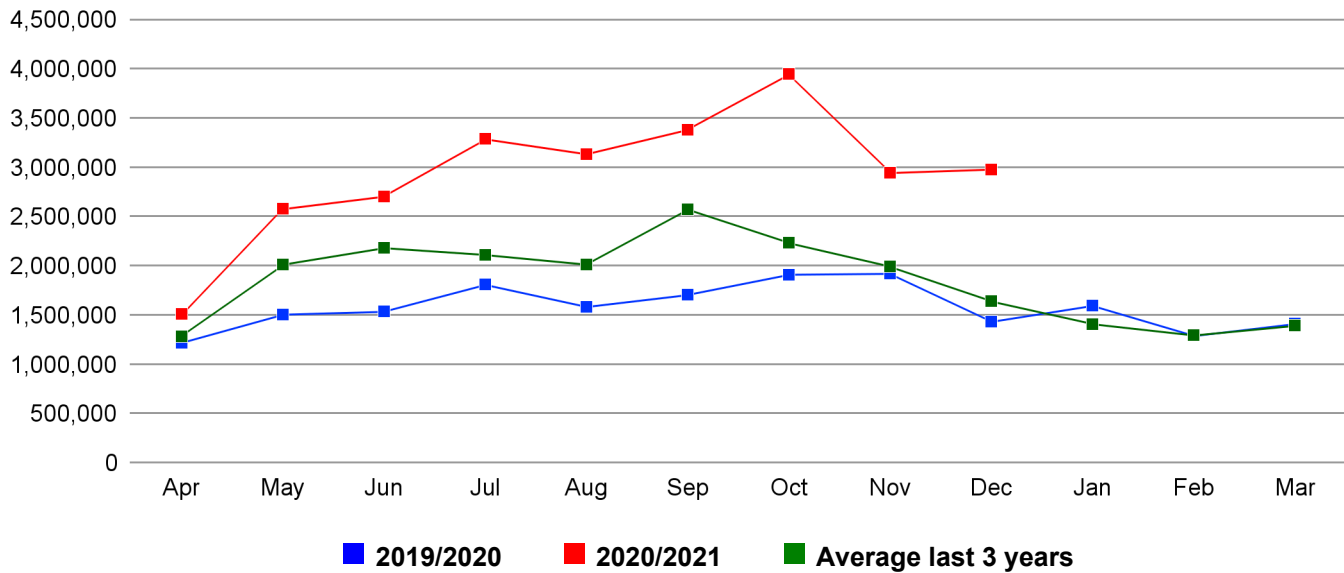
Latest month available: December

1. Monthly Brazilian sugar exports

Month	2019/2020		2020/2021		Variation (%)	
	Qty. (t)	000's US\$*	Qty. (t)	000's US\$*	Qty. (t)	000's US\$*
Apr	1,219,077	354,522	1,511,963	443,064	24%	25%
May	1,507,924	444,266	2,578,512	715,199	71%	61%
Jun	1,536,899	448,656	2,706,718	731,587	76%	63%
Jul	1,811,269	524,529	3,289,260	910,429	82%	74%
Aug	1,585,067	463,063	3,135,772	863,846	98%	87%
Sep	1,707,525	485,266	3,385,228	951,861	98%	96%
Oct	1,913,458	543,247	3,949,120	1,135,311	106%	109%
Nov	1,922,561	559,588	2,946,121	864,909	53%	55%
Dec	1,433,824	411,284	2,981,218	879,783	108%	114%
Jan	1,597,806	470,709			0%	0%
Feb	1,290,273	383,939			0%	0%
Mar	1,413,299	419,953			0%	0%
Subtotal**	14,637,603	4,234,421	26,483,912	7,495,990	81%	77%
Total	18,938,981	5,509,022	26,483,912	7,495,990	40%	36%

Note: *revenue; **'subtotal' shows the exports from April until December

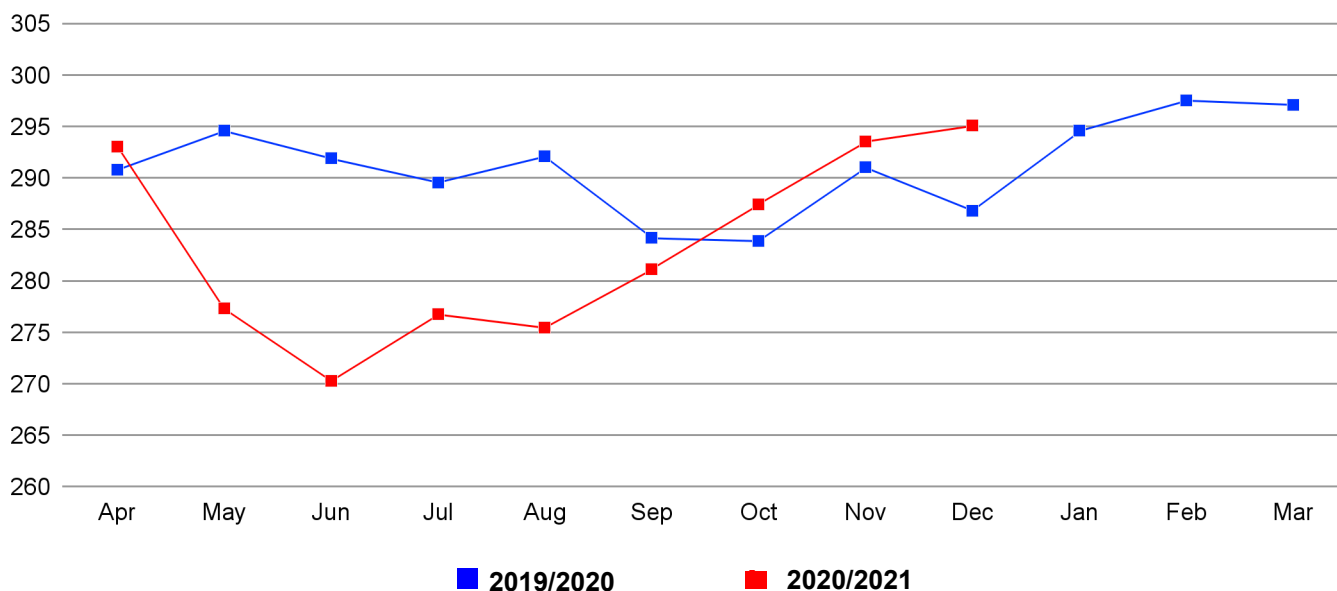
Monthly Brazilian sugar exports (tonnes)



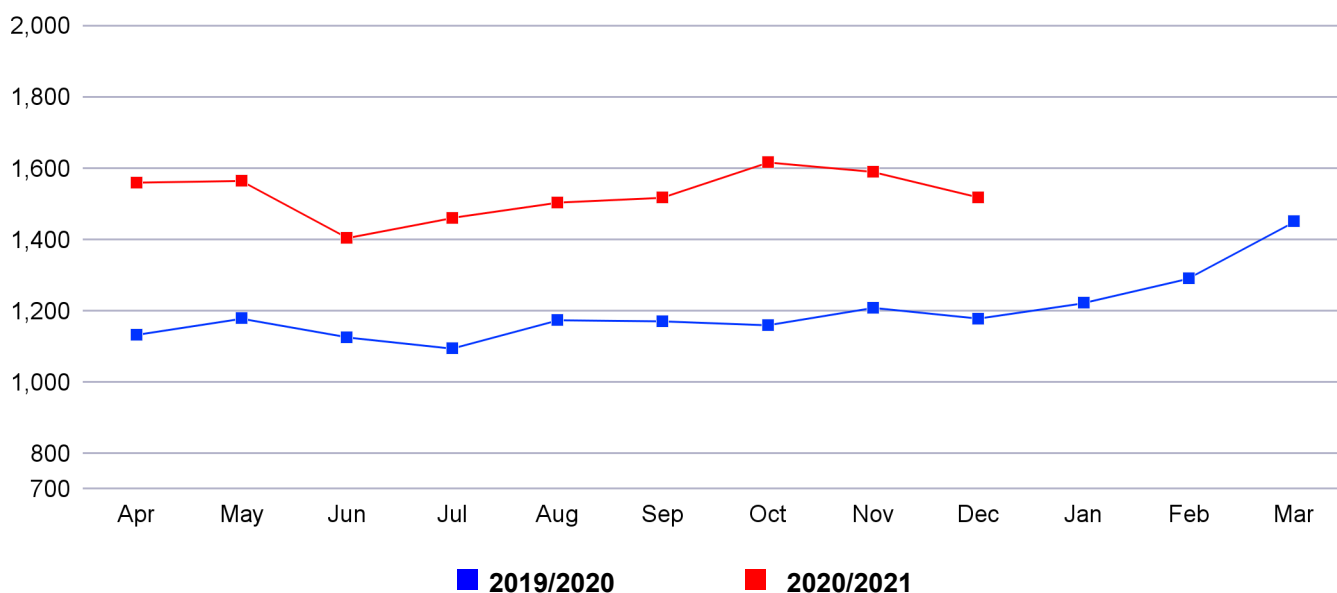
2. Average monthly export prices of Brazilian sugar - R\$/t and US\$/t

Month	Average price (US\$/t)			Exchange rate (R\$/US\$)			Average price (R\$/t)		
	2019/2020	2020/2021	Var. (%)	2019/2020	2020/2021	Var. (%)	2019/2020	2020/2021	Var. (%)
Apr	290.81	293.04	1%	3.90	5.33	37%	1.133.06	1,560.61	38%
May	294.62	277.37	-6%	4.00	5.64	41%	1.178.93	1,565.30	33%
Jun	291.92	270.29	-7%	3.86	5.20	35%	1.126.36	1,404.57	25%
Jul	289.59	276.79	-4%	3.78	5.28	40%	1.094.45	1,461.50	34%
Aug	292.14	275.48	-6%	4.02	5.46	36%	1.174.41	1,504.46	28%
Sep	284.19	281.18	-1%	4.12	5.40	31%	1.171.30	1,518.18	30%
Oct	283.91	287.48	1%	4.09	5.63	38%	1.160.19	1,617.33	39%
Nov	291.06	293.58	1%	4.15	5.42	30%	1.209.31	1,590.53	32%
Dec	286.84	295.11	3%	4.11	5.15	25%	1.178.81	1,518.51	29%
Jan	294.60		0%	4.15		0%	1.222.43		0%
Feb	297.56		0%	4.34		0%	1.291.72		0%
Mar	297.14		0%	4.88		0%	1.451.22		0%
Average	290.88	283.04	-3%	4.12	5.39	31%	1.197.52	1,525.13	27%

Average monthly export prices of Brazilian sugar (US\$/t)



Average monthly export prices of Brazilian sugar (R\$/t)



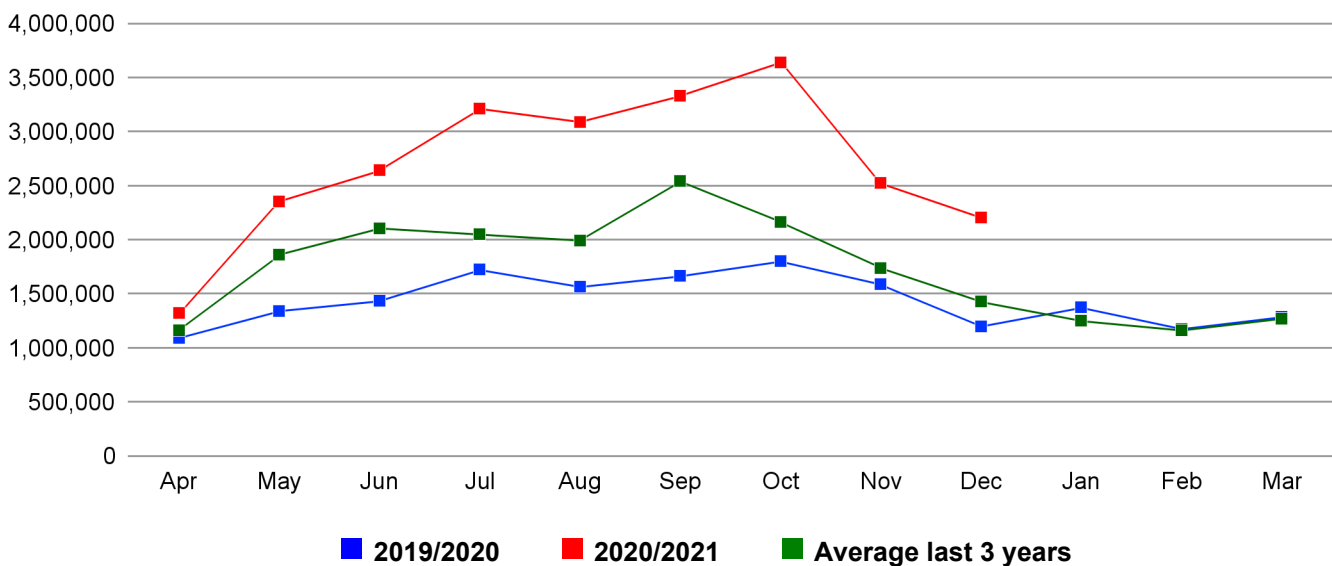
3. Monthly Brazilian sugar exports, by region

3.1. South-Central region

Month	2019/2020		2020/2021		Variation (%)	
	Qty. (t)	000's US\$*	Qty. (t)	000's US\$*	Qty. (t)	000's US\$*
Apr	1,093,528	318,265	1,325,264	380,327	21%	20%
May	1,343,910	394,231	2,357,539	644,809	75%	64%
Jun	1,436,278	417,780	2,643,539	709,877	84%	70%
Jul	1,724,960	499,863	3,215,590	884,361	86%	77%
Aug	1,566,650	457,648	3,092,536	850,005	97%	86%
Sep	1,666,124	471,339	3,334,247	930,954	100%	98%
Oct	1,803,054	504,081	3,644,468	1,024,693	102%	103%
Nov	1,588,925	442,321	2,525,685	733,509	59%	66%
Dec	1,200,972	340,352	2,205,816	645,726	84%	90%
Jan	1,375,385	391,243			0%	0%
Feb	1,176,968	342,845			0%	0%
Mar	1,288,580	380,192			0%	0%
ubtotal*	13,424,400	3,845,881	24,344,684	6,804,261	81%	77%
Total	17,265,333	4,960,160	24,344,684	6,804,261	41%	37%

Note: *revenue; **'subtotal' shows the exports from April until December

Sugar exports from South-Central region (tonnes)

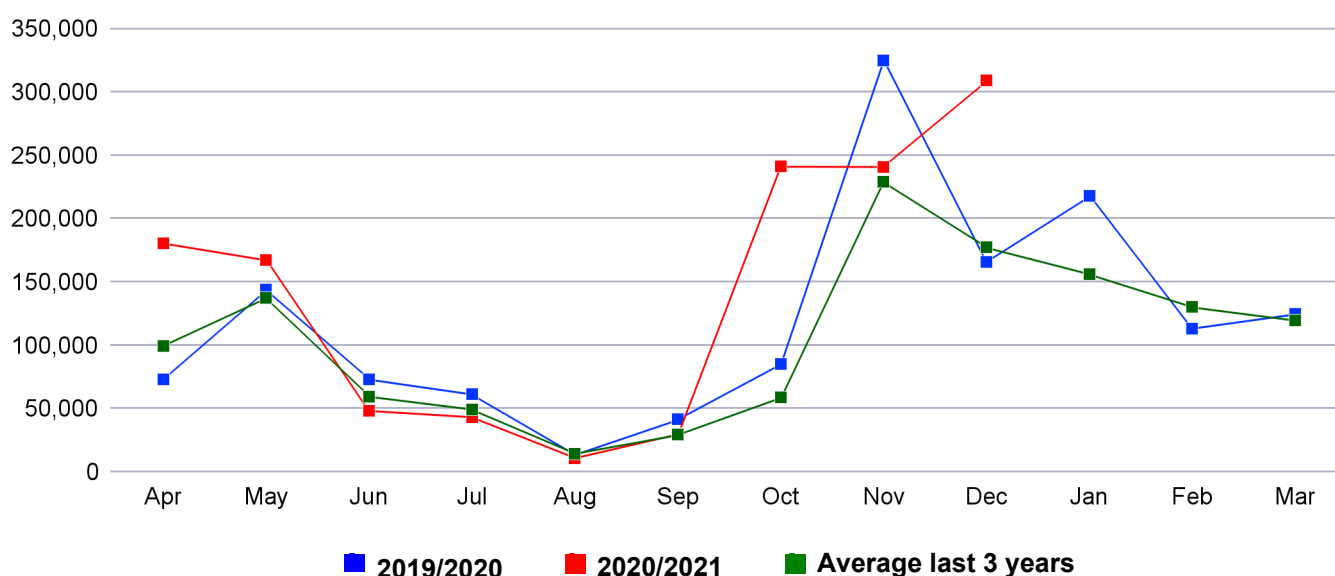


3.2. North-Northeast region

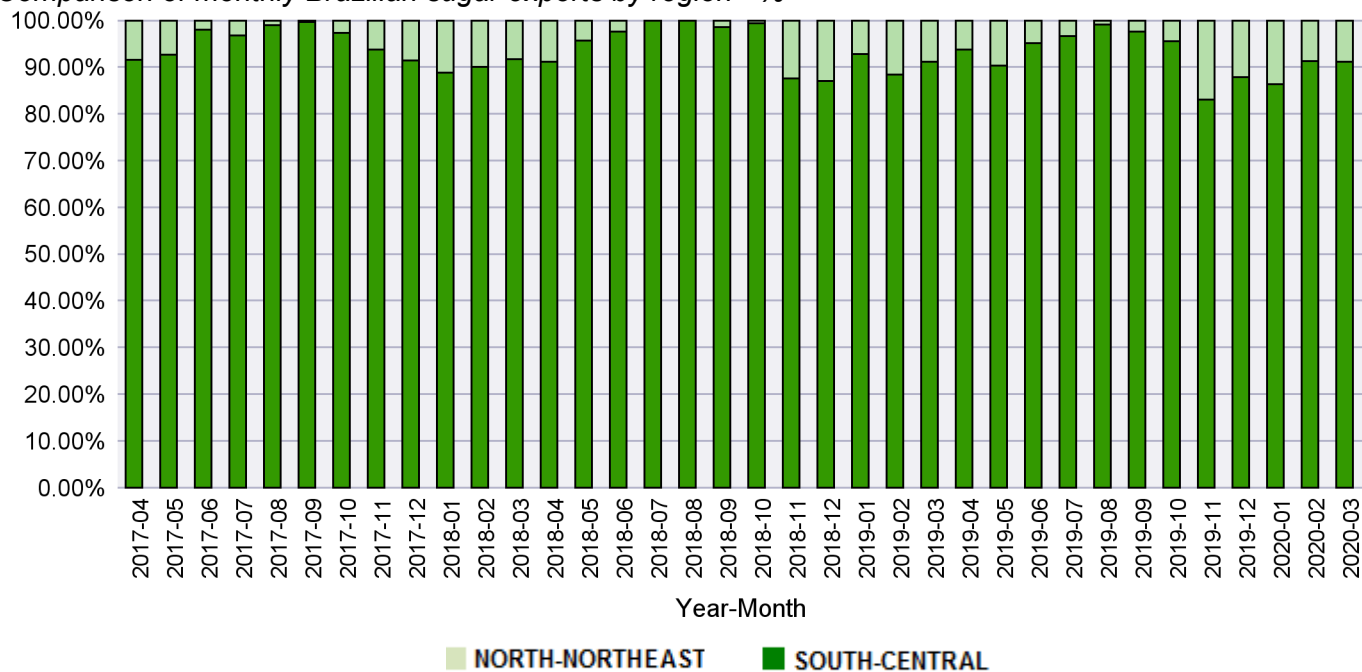
Month	2019/2020		2020/2021		Variation (%)	
	Qty. (t)	000's US\$*	Qty. (t)	000's US\$*	Qty. (t)	000's US\$*
Apr	72,938	21,836	180,699	60,217	148%	176%
May	144,014	44,415	167,199	55,061	16%	24%
Jun	73,122	22,524	48,379	17,631	-34%	-22%
Jul	61,260	17,833	43,370	17,272	-29%	-3%
Aug	13,456	4,081	10,971	5,376	-18%	32%
Sep	41,401	13,926	29,971	14,909	-28%	7%
Oct	85,404	32,537	241,252	94,768	182%	191%
Nov	324,836	115,243	241,061	86,453	-26%	-25%
Dec	165,851	51,920	309,290	110,630	86%	113%
Jan	218,021	78,543	0	0	0%	0%
Feb	113,305	41,093	0	0	0%	0%
Mar	124,719	39,761	0	0	0%	0%
Subtotal*	982,282	324,314	1,272,193	462,317	30%	43%
Total	1,438,327	483,711	1,272,193	462,317	-12%	-4%

Note: *revenue; ***subtotal' shows the exports from April until December

Sugar exports from North-Northeast region (tonnes)



Comparison of monthly Brazilian sugar exports by region - %



4. Top 10-ranked country export destinations for Brazilian sugar exports

Accumulated values from April until December of 2020/2021 harvest season

	Destination	Qty. (t)	Participation (%)
1	CHINA	4,616,918	17.43 %
2	ALGERIA	1,833,795	6.92 %
3	INDIA	1,643,998	6.21 %
4	INDONESIA	1,597,656	6.03 %
5	BANGLADESH	1,581,356	5.97 %
6	NIGERIA	1,272,827	4.81 %
7	MALAYSIA	1,261,031	4.76 %
8	UNITED ARAB EM	1,172,447	4.43 %
9	MOROCCO	1,148,210	4.34 %
10	IRAQ	1,064,481	4.02 %
	<i>OTHERS</i>	9,291,195	35.08%
	TOTAL	26,483,912	100%

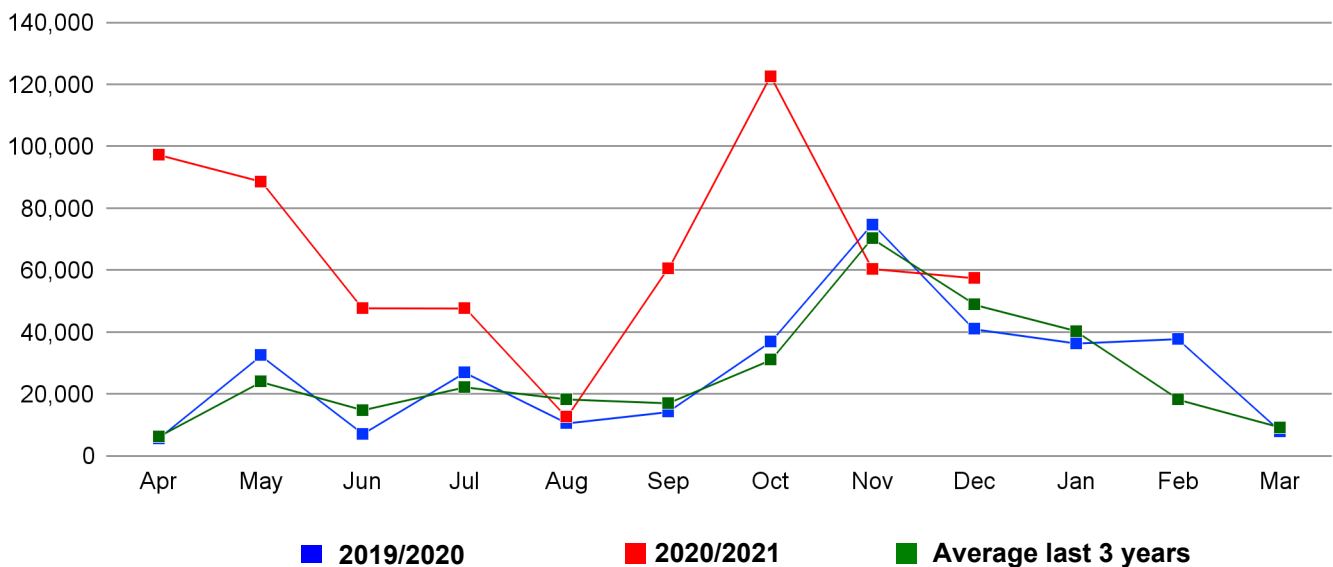
5. Detailed overview of Brazilian sugar exports to USA and EU

UNITED STATES

Month	2019/2020		2020/2021		Variation (%)	
	Qty. (t)	000's US\$*	Qty. (t)	000's US\$*	Qty. (t)	000's US\$*
Apr	5,648	4,508	97,408	33,202	1624%	636%
May	32,639	14,770	88,708	32,259	172%	118%
Jun	7,081	5,804	47,837	17,516	576%	202%
Jul	27,122	9,490	47,777	18,942	76%	100%
Aug	10,609	8,155	12,767	7,545	20%	-7%
Sep	14,338	11,130	60,782	23,252	324%	109%
Oct	37,085	20,496	122,635	61,948	231%	202%
Nov	74,847	39,969	60,549	33,004	-19%	-17%
Dec	41,080	16,012	57,533	31,239	40%	95%
Jan	36,437	18,181	0	0	0%	0%
Feb	37,898	12,852	0	0	0%	0%
Mar	7,930	5,361	0	0	0%	0%
Subtotal*	250,450	130,335	595,996	258,908	79%	99%
Total	332,716	166,730	595,996	258,908	79%	99%

Note: *revenue; **subtotal' shows the exports from April until September

Sugar exports from Brazil to UNITED STATES (tonnes)

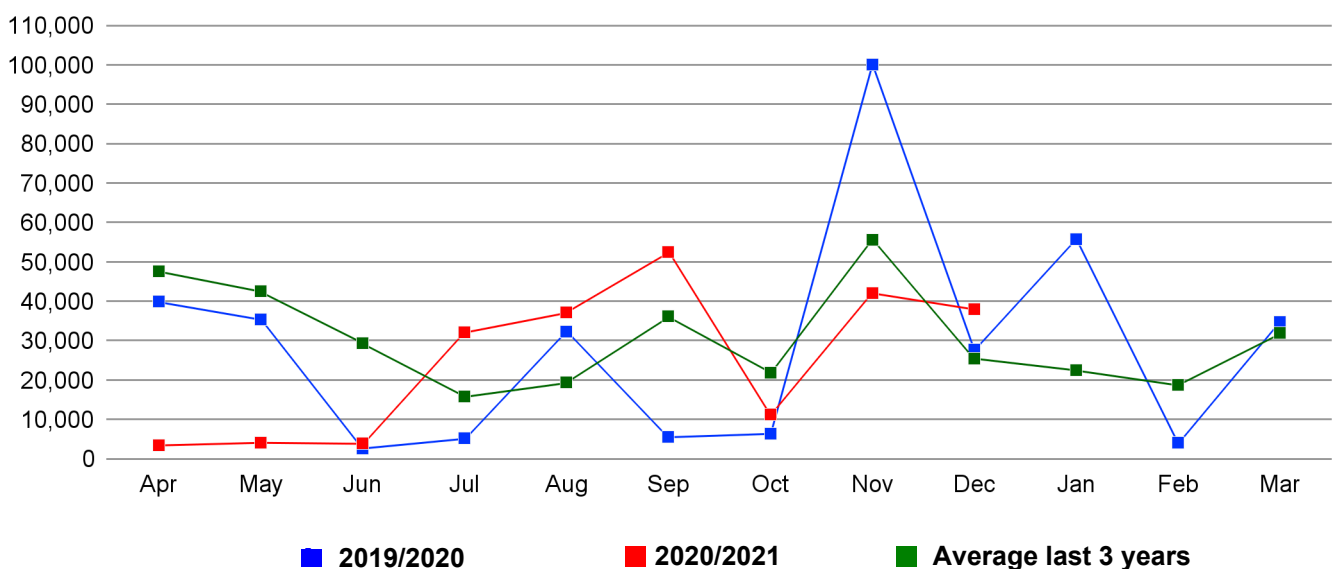


EUROPEAN UNION

Month	2019/2020		2020/2021		Variation (%)	
	Qty. (t)	000's US\$*	Qty. (t)	000's US\$*	Qty. (t)	000's US\$*
Apr	39,938	15,434	3,538	2,119	-91%	-86%
May	35,419	14,565	4,213	2,502	-88%	-83%
Jun	2,743	1,813	3,952	1,987	44%	10%
Jul	5,245	3,012	32,152	10,487	513%	248%
Aug	32,365	13,767	37,215	12,757	15%	-7%
Sep	5,611	2,642	52,586	15,634	837%	492%
Oct	6,481	3,431	11,375	5,049	76%	47%
Nov	100,132	30,945	42,180	14,284	-58%	-54%
Dec	27,837	8,624	38,033	12,712	37%	47%
Jan	55,752	16,831	0	0	0%	0%
Feb	4,170	2,874	0	0	0%	0%
Mar	34,803	13,150	0	0	0%	0%
Subtotal*	255,771	94,233	225,243	77,531	-36%	-18%
Total	350,496	127,089	225,243	77,531	-36%	-18%

Note: *revenue; **subtotal* shows the exports from April until September

Sugar exports from Brazil to EUROPEAN UNION (tonnes)



Source: prepared by UNICA with data from Secretariat of Foreign Trade (SECEX).

Notes:

1. Quantity corresponds to the net weight, expressed in tonnes, of sugar exports;
2. Value of exports FOB (Free On Board) expressed in current US dollars;
3. Average price refers to the price calculated by the federal government's SISCOMEX (Integrated System of Foreign Trade - *Sistema Integrado de Comércio Exterior*). This price is calculated based on the shipment date of the product and not on the date of closing the sales deal;
4. Exchange rate shown in Table 2 is based on the daily settlement price ("PTAX800" transaction) available on SISBACEN - Central Bank Information System (*Sistema de Informações do Banco Central*);
5. Data from South-Central and North-Northeast regions has been compiled according to the state where the exporting company is located – i.e., corresponds to the state where the agricultural product has grown or where the last stage of the manufacturing process occurred;
6. Statistics appearing on the SECEX database as "undeclared zone", "national product", "undeclared" or "re-export" were added to the class Others, due the impossibility of identifying the state of origin of the product;
7. South-Central region includes the states of São Paulo, Rio de Janeiro, Paraná, Rio Grande do Sul, Santa Catarina, Goiás, Mato Grosso, Mato Grosso do Sul, Minas Gerais and Espírito Santo. North-Northeast region includes the following states: Acre, Alagoas, Amazonas, Bahia, Ceará, Maranhão, Pará, Paraíba, Pernambuco, Piauí, Rio Grande do Norte, Roraima, Sergipe and Tocantins;
8. Country export destination, as indicated at the time of shipment, corresponds to the last country to which the product was forwarded;
9. The harvest year extends from April to March.

This report has been prepared for informative purposes only and is available free of charge from www.unica.com.br/unicadata.

UNICA has endeavored to ensure that all data and information utilized are precise and obtained from credible sources. However, the organization is not responsible for decisions of any nature, financial or otherwise, that might be undertaken based on the contents of this report.

Reproduction of this report, in whole or in part, in any form or by any means, is permitted only with The Brazilian Sugarcane Industry Association (UNICA) credited as the source.

Staff:

Antonio de Padua Rodrigues (Technical Director), Luciano Rodrigues (Manager), Cleber dos Santos Valin (Planning Assistant), José Guilherme de Oliveira Belon (Economic Analyst), Mariana Regina Zechin De Lucca (Economic Specialist) and Valdemir Nunes Machado (Systems Analyst).