



**Final report of 2013/2014 harvest season**

**South-Central region**

**Table 1.** 2013/2014 sugarcane harvest in South-Central Brazil - final numbers  
Comparison with 2012/2013 crop year

Products	Crop year			
	2012/2013	2013/2014	Var. (%)	
Sugarcane <sup>1</sup>	532,758	597,061	↑ 12.07%	
Sugar <sup>1</sup>	34,097	34,295	↑ 0.58%	
Anhydrous ethanol <sup>2</sup>	8,730	11,008	↑ 26.09%	
Hydrous ethanol <sup>2</sup>	12,632	14,568	↑ 15.32%	
Total ethanol <sup>2</sup>	21,362	25,575	↑ 19.72%	
ATR <sup>1</sup>	72,228	79,601	↑ 10.21%	
ATR/ ton of sugarcane <sup>3</sup>	135.57	133.32	↓ -1.66%	
Share (%)	sugar	49.54%	45.22%	↓
	ethanol	50.46%	54.78%	↑
Liters of ethanol/ ton of sugarcane	40.10	42.83	↑ 6.83%	
Kilograms of sugar/ ton of sugarcane	64.00	57.44	↓ -10.25%	

Source: UNICA. Note: <sup>1</sup> - thousand tons; <sup>2</sup> - million liters; <sup>3</sup> - kg of ATR/ ton of sugarcane; "ATR" is the amount of product obtained per ton of crushed sugarcane. "ATR" index was calculated excluding corn ethanol production registered during the 2013/2014 harvest season (4.89 million liters of anhydrous ethanol and 32.14 million liters of hydrous ethanol).

**Table 2.** Final figures of 2013/2014 harvest season in South-Central region of Brazil  
Comparison with 2014/2015 crop year projection

Products	Crop year				Var. (%) (B/A)
	2013/2014 (A)	2014/2015		Total (B)	
		<i>Up to March, 31</i>	<i>From April, 01</i>		
Sugarcane <sup>1</sup>	597,061	3,730	576,270	580,000	↓ -2.86%
Sugar <sup>1</sup>	34,295	138	32,362	32,500	↓ -5.23%
Anhydrous ethanol <sup>2</sup>	11,008	46	11,204	11,250	↑ 2.20%
Hydrous ethanol <sup>2</sup>	14,568	100	14,525	14,625	↑ 0.39%
Total ethanol <sup>2</sup>	25,575	146	25,729	25,875	↑ 1.17%
ATR <sup>1</sup>	79,601	393	77,907	78,300	↓ -1.63%
ATR/ ton of sugarcane <sup>3</sup>	133.32	105.38	135.19	135.00	↑ 1.26%
Share (%)	sugar	45.22%	36.77%	43.56%	↓
	ethanol	54.78%	63.23%	56.44%	↑

Source: UNICA. Note: <sup>1</sup> - thousand tons; <sup>2</sup> - million liters; <sup>3</sup> - kg of ATR/ ton of sugarcane; "ATR" is the amount of product obtained per ton of crushed sugarcane. "ATR" index was calculated excluding corn ethanol production registered during the 2013/2014 harvest season.

**Table 3. Sugarcane harvest per State of South-Central region**

STATE	Sugarcane <sup>1</sup>		Sugar <sup>1</sup>		Total ethanol <sup>2</sup>		Anhydrous ethanol <sup>2</sup>		Hydrous ethanol <sup>2</sup>	
	2012/2013	2013/2014	2012/2013	2013/2014	2012/2013	2013/2014	2012/2013	2013/2014	2012/2013	2013/2014
ES	3,519,207	3,769,980	98,762	122,979	177,626	181,820	108,965	110,276	68,661	71,544
GO	52,726,898	62,017,736	1,875,260	1,890,649	3,129,934	3,878,931	806,408	1,055,307	2,323,526	2,823,624
MT	16,318,765	16,989,204	491,919	417,730	974,685	1,103,857	447,279	532,148	527,406	571,709
MS	37,330,449	41,496,041	1,741,908	1,367,573	1,916,972	2,231,415	467,751	613,578	1,449,221	1,617,837
MG	51,759,457	61,042,002	3,418,321	3,411,125	1,993,713	2,657,357	869,786	1,246,193	1,123,927	1,411,164
PR	39,725,948	42,215,787	3,086,138	3,036,810	1,299,344	1,487,641	429,267	492,025	870,077	995,616
RJ	1,421,948	2,007,610	95,342	84,494	37,469	85,402	0	0	37,469	85,402
RS	32,852	73,236	0	0	1,665	4,510	0	0	1,665	4,510
SP	329,922,736	367,449,592	23,289,350	23,963,379	11,830,466	13,944,092	5,600,398	6,957,985	6,230,068	6,986,107
<b>TOTAL</b>	<b>532,758,260</b>	<b>597,061,188</b>	<b>34,097,000</b>	<b>34,294,739</b>	<b>21,361,874</b>	<b>25,575,025</b>	<b>8,729,854</b>	<b>11,007,512</b>	<b>12,632,020</b>	<b>14,567,513</b>

STATE	Kg TRS/ton. sugarcane		Kg of sugar/ton. sugarcane		Liters of ethanol/ton. sugarcane		Sugar mix (%)		Ethanol mix (%)	
	2012/2013	2013/2014	2012/2013	2013/2014	2012/2013	2013/2014	2012/2013	2013/2014	2012/2013	2013/2014
ES	116.31	117.21	28.06	32.62	50.47	48.23	25.32%	29.21%	74.68%	70.79%
GO	137.94	138.07	35.57	30.49	59.36	62.55	27.06%	23.17%	72.94%	76.83%
MT	133.75	133.32	30.14	24.59	59.73	64.97	23.65%	19.36%	76.35%	80.64%
MS	135.96	125.80	46.66	32.96	51.35	53.77	36.02%	27.49%	63.98%	72.51%
MG	135.10	133.11	66.04	55.88	38.52	43.53	51.30%	44.06%	48.70%	55.94%
PR	137.14	135.41	77.69	71.94	32.71	35.24	59.45%	55.75%	40.55%	44.25%
RJ	114.54	115.47	67.05	42.09	26.35	42.54	61.44%	38.25%	38.56%	61.75%
RS	84.95	103.22	0	0	50.68	61.58	0%	0%	0%	0%
SP	135.43	133.43	70.59	65.22	35.86	37.95	54.70%	51.29%	45.30%	48.71%
<b>TOTAL</b>	<b>135.57</b>	<b>133.32</b>	<b>64.00</b>	<b>57.44</b>	<b>40.10</b>	<b>42.83</b>	<b>49.54%</b>	<b>45.22%</b>	<b>50.46%</b>	<b>54.78%</b>

Source: UNICA. Note: <sup>1</sup> - thousand tons; <sup>2</sup> - million liters; <sup>3</sup> - kg of TRS/ton. of sugarcane. "ATR" index was calculated excluding corn ethanol production registered during the 2013/2014 harvest season.

**Table 4.** Sugarcane harvest by autonomous distilleries and mixed production mills in South-Central region

<b>MILLS</b>	<b>2012/2013</b>	<b>2013/2014</b>
<b>Mixed production mills</b>		
Sugarcane <sup>1</sup>	456,832	511,929
Sugar <sup>1</sup>	34,097	34,295
Anhydrous ethanol <sup>2</sup>	6,960	8,927
Hydrous ethanol <sup>2</sup>	8,064	9,667
Total ethanol <sup>2</sup>	15,025	18,594
<b>Distilleries</b>		
Sugarcane <sup>1</sup>	75,926	85,132
Sugar <sup>1</sup>	0	0
Anhydrous ethanol <sup>2</sup>	1,770	2,081
Hydrous ethanol <sup>2</sup>	4,568	4,901
Total ethanol <sup>2</sup>	6,337	6,981

Source: UNICA. Note: <sup>1</sup> - thousand tons; <sup>2</sup> - million liters; autonomous distilleries are plants dedicated exclusively to ethanol production; mixed production mills are dedicated to producing both ethanol and sugar.

**Table 5. Bi-weekly sugarcane crushing, ACCUMULATED - results for the South-Central region**

Bi-weekly period	SUGARCANE (tons)								
	São Paulo			South-Central region			Others states		
	2012/2013	2013/2014	Var. (%)	2012/2013	2013/2014	Var. (%)	2012/2013	2013/2014	Var. (%)
16/02	0	0		62,407	0		62,407	0	
01/03	0	0		145,523	0		145,523	0	
16/03	0	83,427	0%	268,902	189,063	-30%	268,902	105,636	-61%
01/04	104,322	929,297	791%	533,847	1,840,562	245%	429,525	911,265	112%
16/04	2,130,641	6,143,937	188%	4,736,769	9,573,279	102%	2,606,128	3,429,342	32%
01/05	6,753,397	26,582,398	294%	14,133,076	41,715,627	195%	7,379,679	15,133,229	105%
16/05	18,078,715	52,951,373	193%	35,014,193	82,138,063	135%	16,935,478	29,186,690	72%
01/06	40,950,372	74,439,279	82%	70,798,058	117,681,757	66%	29,847,686	43,242,478	45%
16/06	55,094,486	95,769,497	74%	96,674,881	153,333,465	59%	41,580,395	57,563,968	38%
01/07	73,838,517	113,832,267	54%	128,377,825	182,738,268	42%	54,539,308	68,906,001	26%
16/07	100,037,254	140,047,880	40%	170,572,914	225,731,010	32%	70,535,660	85,683,130	21%
01/08	128,355,725	166,707,398	30%	216,850,039	270,163,489	25%	88,494,314	103,456,091	17%
16/08	155,949,298	194,863,040	25%	261,096,423	316,635,285	21%	105,147,125	121,772,245	16%
01/09	185,033,425	224,574,908	21%	307,615,408	365,444,859	19%	122,581,983	140,869,951	15%
16/09	211,142,346	251,390,113	19%	349,583,250	408,543,259	17%	138,440,904	157,153,146	14%
01/10	229,995,069	271,293,528	18%	381,351,364	442,613,956	16%	151,356,295	171,320,428	13%
16/10	254,509,209	289,850,058	14%	419,347,426	473,902,542	13%	164,838,217	184,052,484	12%
01/11	277,010,496	314,410,424	14%	455,494,097	512,841,085	13%	178,483,601	198,430,661	11%
16/11	294,955,779	334,701,570	13%	481,986,144	545,155,064	13%	187,030,365	210,453,494	13%
01/12	314,572,839	350,855,713	12%	510,593,620	571,197,780	12%	196,020,781	220,342,067	12%
16/12	327,137,555	362,238,753	11%	528,155,576	589,268,333	12%	201,018,021	227,029,580	13%
01/01	329,070,599	366,337,618	11%	531,311,133	595,006,866	12%	202,240,534	228,669,248	13%
16/01	329,432,882	366,719,522	11%	531,853,466	595,666,359	12%	202,420,584	228,946,837	13%
01/02	329,652,510	366,862,753	11%	532,260,252	595,977,140	12%	202,607,742	229,114,387	13%
16/02	329,674,913	366,882,077	11%	532,415,545	596,126,411	12%	202,740,632	229,244,334	13%
01/03	329,775,007	366,882,077	11%	532,551,581	596,180,762	12%	202,776,574	229,298,685	13%
16/03	329,830,906	366,918,034	11%	532,607,480	596,281,589	12%	202,776,574	229,363,555	13%
01/04	329,922,736	367,449,592	11%	532,758,260	597,061,188	12%	202,835,524	229,611,596	13%

Source: UNICA.

**Table 6.** Bi-weekly sugarcane crushing, ACCUMULATED - results for the South-Central region

Bi-weekly period	SUGAR (tons)								
	São Paulo			South-Central region			Others states		
	2012/2013	2013/2014	Var. (%)	2012/2013	2013/2014	Var. (%)	2012/2013	2013/2014	Var. (%)
16/02	0	0		2,083	0		2,083	0	
01/03	0	0		4,692	0		4,692	0	
16/03	0	816	0%	6,053	867	-86%	6,053	51	-99%
01/04	3,691	27,262	639%	9,744	48,222	395%	6,053	20,960	246%
16/04	71,742	179,554	150%	152,083	245,078	61%	80,341	65,524	-18%
01/05	290,985	1,201,510	313%	545,249	1,701,785	212%	254,264	500,275	97%
16/05	874,723	2,718,767	211%	1,569,285	3,782,832	141%	694,562	1,064,065	53%
01/06	2,243,638	4,039,759	80%	3,528,807	5,640,636	60%	1,285,169	1,600,877	25%
16/06	3,086,027	5,258,072	70%	4,895,032	7,438,666	52%	1,809,005	2,180,594	21%
01/07	4,261,147	6,344,440	49%	6,690,215	8,948,889	34%	2,429,068	2,604,449	7%
16/07	6,064,817	8,022,865	32%	9,324,855	11,366,329	22%	3,260,038	3,343,464	3%
01/08	8,061,881	9,769,962	21%	12,296,199	13,907,584	13%	4,234,318	4,137,622	-2%
16/08	10,145,553	11,793,034	16%	15,324,290	16,830,772	10%	5,178,737	5,037,738	-3%
01/09	12,439,142	14,014,538	13%	18,662,605	20,059,971	7%	6,223,463	6,045,433	-3%
16/09	14,581,925	16,115,080	11%	21,798,577	23,037,208	6%	7,216,652	6,922,128	-4%
01/10	16,023,279	17,668,451	10%	24,005,312	25,341,341	6%	7,982,033	7,672,890	-4%
16/10	17,976,137	18,958,250	5%	26,795,758	27,248,573	2%	8,819,621	8,290,323	-6%
01/11	19,704,966	20,708,445	5%	29,337,152	29,713,415	1%	9,632,186	9,004,970	-7%
16/11	20,988,789	22,102,034	5%	31,079,495	31,688,364	2%	10,090,706	9,586,330	-5%
01/12	22,352,327	23,124,045	3%	32,913,596	33,120,938	1%	10,561,269	9,996,893	-5%
16/12	23,174,472	23,731,923	2%	33,957,976	34,002,562	0%	10,783,504	10,270,639	-5%
01/01	23,263,073	23,931,109	3%	34,067,927	34,256,845	1%	10,804,854	10,325,736	-4%
16/01	23,274,206	23,939,364	3%	34,081,825	34,265,105	1%	10,807,619	10,325,741	-4%
01/02	23,274,809	23,941,351	3%	34,082,459	34,267,358	1%	10,807,650	10,326,007	-4%
16/02	23,274,809	23,941,351	3%	34,082,459	34,267,359	1%	10,807,650	10,326,008	-4%
01/03	23,281,165	23,941,351	3%	34,088,815	34,267,359	1%	10,807,650	10,326,008	-4%
16/03	23,285,281	23,943,240	3%	34,092,931	34,270,517	1%	10,807,650	10,327,277	-4%
01/04	23,289,350	23,963,379	3%	34,097,000	34,294,739	1%	10,807,650	10,331,360	-4%

Source: UNICA.

**Table 7. Bi-weekly sugarcane crushing, ACCUMULATED - results for the South-Central region**

Bi-weekly period	São Paulo			TOTAL ETHANOL (m <sup>3</sup> ) South-Central region			Others states		
	2012/2013	2013/2014	Var. (%)	2012/2013	2013/2014	Var. (%)	2012/2013	2013/2014	Var. (%)
16/02	0	0	0%	1,049	0	-100%	1,049	0	-100%
01/03	0	0	0%	3,637	0	-100%	3,637	0	-100%
16/03	0	3,052	0%	11,004	9,329	-15%	11,004	6,277	-43%
01/04	1,140	34,833	2956%	24,364	70,246	188%	23,224	35,413	52%
16/04	69,127	221,200	220%	177,878	370,328	108%	108,751	149,128	37%
01/05	244,100	977,230	300%	546,704	1,623,964	197%	302,604	646,734	114%
16/05	617,662	1,971,181	219%	1,319,501	3,277,352	148%	701,839	1,306,171	86%
01/06	1,374,393	2,846,590	107%	2,613,382	4,876,421	87%	1,238,989	2,029,831	64%
16/06	1,850,872	3,653,120	97%	3,611,668	6,386,936	77%	1,760,796	2,733,816	55%
01/07	2,478,146	4,348,036	75%	4,818,154	7,678,256	59%	2,340,008	3,330,220	42%
16/07	3,364,188	5,291,010	57%	6,422,623	9,458,982	47%	3,058,435	4,167,972	36%
01/08	4,322,296	6,273,744	45%	8,205,479	11,357,938	38%	3,883,183	5,084,194	31%
16/08	5,283,336	7,299,899	38%	9,956,904	13,312,208	34%	4,673,568	6,012,309	29%
01/09	6,345,827	8,395,912	32%	11,881,670	15,400,355	30%	5,535,843	7,004,443	27%
16/09	7,341,978	9,400,154	28%	13,691,191	17,281,352	26%	6,349,213	7,881,198	24%
01/10	8,099,445	10,212,062	26%	15,127,475	18,883,629	25%	7,028,030	8,671,567	23%
16/10	9,037,861	10,902,654	21%	16,743,224	20,240,581	21%	7,705,363	9,337,927	21%
01/11	9,865,915	11,824,906	20%	18,226,090	21,878,668	20%	8,360,175	10,053,762	20%
16/11	10,516,346	12,574,514	20%	19,282,402	23,195,217	20%	8,766,056	10,620,703	21%
01/12	11,211,829	13,210,160	18%	20,386,059	24,323,300	19%	9,174,230	11,113,140	21%
16/12	11,700,014	13,689,945	17%	21,123,909	25,132,233	19%	9,423,895	11,442,288	21%
01/01	11,790,501	13,896,821	18%	21,285,300	25,440,703	20%	9,494,799	11,543,882	22%
16/01	11,807,707	13,914,487	18%	21,310,519	25,481,267	20%	9,502,812	11,566,780	22%
01/02	11,825,779	13,923,041	18%	21,342,110	25,505,316	20%	9,516,331	11,582,275	22%
16/02	11,825,274	13,924,414	18%	21,349,869	25,519,311	20%	9,524,595	11,594,897	22%
01/03	11,825,975	13,924,479	18%	21,352,882	25,528,133	20%	9,526,907	11,603,654	22%
16/03	11,827,403	13,925,782	18%	21,355,055	25,538,775	20%	9,527,652	11,612,993	22%
01/04	11,830,466	13,944,092	18%	21,361,874	25,575,025	20%	9,531,408	11,630,933	22%

Source: UNICA. Note: data include the volume of reprocessed ethanol and corn ethanol production.



**Table 8.** Bi-weekly sugarcane crushing, ACCUMULATED - results for the South-Central region

Bi-weekly period	ANHYDROUS ETHANOL (m <sup>3</sup> )								
	São Paulo			South-Central region			Others states		
	2012/2013	2013/2014	Var. (%)	2012/2013	2013/2014	Var. (%)	2012/2013	2013/2014	Var. (%)
16/02	0	0	0%	0	0	0%	0	0	0%
01/03	0	0	0%	0	0	0%	0	0	0%
16/03	0	852	0%	0	1,389	0%	0	537	0%
01/04	0	7,630	0%	0	16,439	0%	0	8,809	0%
16/04	-38,523	39,198	-202%	-42,738	39,227	-192%	-4,215	29	-101%
01/05	-56,891	288,806	-608%	-48,318	399,334	-926%	8,573	110,528	1189%
16/05	37,727	736,972	1853%	124,602	1,065,953	755%	86,875	328,981	279%
01/06	336,240	1,165,762	247%	560,371	1,755,063	213%	224,131	589,301	163%
16/06	553,432	1,558,421	182%	965,520	2,397,942	148%	412,088	839,521	104%
01/07	828,077	1,927,016	133%	1,456,072	2,978,838	105%	627,995	1,051,822	67%
16/07	1,253,822	2,426,171	94%	2,131,274	3,786,708	78%	877,452	1,360,537	55%
01/08	1,737,433	2,974,055	71%	2,908,935	4,673,287	61%	1,171,502	1,699,232	45%
16/08	2,228,263	3,513,179	58%	3,687,942	5,534,789	50%	1,459,679	2,021,610	38%
01/09	2,775,266	4,107,842	48%	4,546,325	6,499,981	43%	1,771,059	2,392,139	35%
16/09	3,295,324	4,636,543	41%	5,357,256	7,362,500	37%	2,061,932	2,725,957	32%
01/10	3,701,928	5,048,040	36%	5,991,157	8,074,200	35%	2,289,229	3,026,160	32%
16/10	4,207,235	5,414,912	29%	6,744,304	8,697,295	29%	2,537,069	3,282,383	29%
01/11	4,662,373	5,925,337	27%	7,427,377	9,484,811	28%	2,765,004	3,559,474	29%
16/11	5,017,516	6,324,911	26%	7,946,349	10,092,928	27%	2,928,833	3,768,017	29%
01/12	5,366,915	6,666,542	24%	8,436,320	10,582,276	25%	3,069,405	3,915,734	28%
16/12	5,616,428	6,883,209	23%	8,786,620	10,903,541	24%	3,170,192	4,020,332	27%
01/01	5,653,326	6,961,287	23%	8,844,927	11,015,251	25%	3,191,601	4,053,964	27%
16/01	5,661,135	6,967,845	23%	8,852,220	11,023,924	25%	3,191,085	4,056,079	27%
01/02	5,665,542	6,972,683	23%	8,856,147	11,030,945	25%	3,190,605	4,058,262	27%
16/02	5,648,769	6,980,501	24%	8,838,207	11,039,996	25%	3,189,438	4,059,495	27%
01/03	5,633,602	6,977,604	24%	8,811,300	11,030,637	25%	3,177,698	4,053,033	28%
16/03	5,624,083	6,963,464	24%	8,778,636	11,014,469	25%	3,154,553	4,051,005	28%
01/04	5,600,398	6,957,985	24%	8,729,854	11,007,512	26%	3,129,456	4,049,527	29%

Source: UNICA. Note: data include corn ethanol production and reprocessing (ie, the final amount refers to the direct production of anhydrous ethanol plus the converted volume of hydrous into anhydrous ethanol).

**Table 9.** Bi-weekly sugarcane crushing, ACCUMULATED - results for the South-Central region

Bi-weekly period	HYDROUS ETHANOL (m <sup>3</sup> )								
	São Paulo			South-Central region			Others states		
	2012/2013	2013/2014	Var. (%)	2012/2013	2013/2014	Var. (%)	2012/2013	2013/2014	Var. (%)
16/02	0	0	0%	1,049	0	-100%	1,049	0	-100%
01/03	0	0	0%	3,637	0	-100%	3,637	0	-100%
16/03	0	2,200	0%	11,004	7,940	-28%	11,004	5,740	-48%
01/04	1,140	27,203	2286%	24,364	53,807	121%	23,224	26,604	15%
16/04	107,650	182,002	69%	220,616	331,101	50%	112,966	149,099	32%
01/05	300,991	688,424	129%	595,022	1,224,630	106%	294,031	536,206	82%
16/05	579,935	1,234,209	113%	1,194,899	2,211,399	85%	614,964	977,190	59%
01/06	1,038,153	1,680,828	62%	2,053,011	3,121,358	52%	1,014,858	1,440,530	42%
16/06	1,297,440	2,094,699	61%	2,646,148	3,988,994	51%	1,348,708	1,894,295	40%
01/07	1,650,069	2,421,020	47%	3,362,082	4,699,418	40%	1,712,013	2,278,398	33%
16/07	2,110,366	2,864,839	36%	4,291,349	5,672,274	32%	2,180,983	2,807,435	29%
01/08	2,584,863	3,299,689	28%	5,296,544	6,684,651	26%	2,711,681	3,384,962	25%
16/08	3,055,073	3,786,720	24%	6,268,962	7,777,419	24%	3,213,889	3,990,699	24%
01/09	3,570,561	4,288,070	20%	7,335,345	8,900,374	21%	3,764,784	4,612,304	23%
16/09	4,046,654	4,763,611	18%	8,333,935	9,918,852	19%	4,287,281	5,155,241	20%
01/10	4,397,517	5,164,022	17%	9,136,318	10,809,429	18%	4,738,801	5,645,407	19%
16/10	4,830,626	5,487,742	14%	9,998,920	11,543,286	15%	5,168,294	6,055,544	17%
01/11	5,203,542	5,899,569	13%	10,798,713	12,393,857	15%	5,595,171	6,494,288	16%
16/11	5,498,830	6,249,603	14%	11,336,053	13,102,289	16%	5,837,223	6,852,686	17%
01/12	5,844,914	6,543,618	12%	11,949,739	13,741,024	15%	6,104,825	7,197,406	18%
16/12	6,083,586	6,806,736	12%	12,337,289	14,228,692	15%	6,253,703	7,421,956	19%
01/01	6,137,175	6,935,534	13%	12,440,373	14,425,452	16%	6,303,198	7,489,918	19%
16/01	6,146,572	6,946,642	13%	12,458,299	14,457,343	16%	6,311,727	7,510,701	19%
01/02	6,160,237	6,950,358	13%	12,485,963	14,474,371	16%	6,325,726	7,524,013	19%
16/02	6,176,505	6,943,913	12%	12,511,662	14,479,315	16%	6,335,157	7,535,402	19%
01/03	6,192,373	6,946,875	12%	12,541,582	14,497,496	16%	6,349,209	7,550,621	19%
16/03	6,203,320	6,962,318	12%	12,576,419	14,524,306	15%	6,373,099	7,561,988	19%
01/04	6,230,068	6,986,107	12%	12,632,020	14,567,513	15%	6,401,952	7,581,406	18%

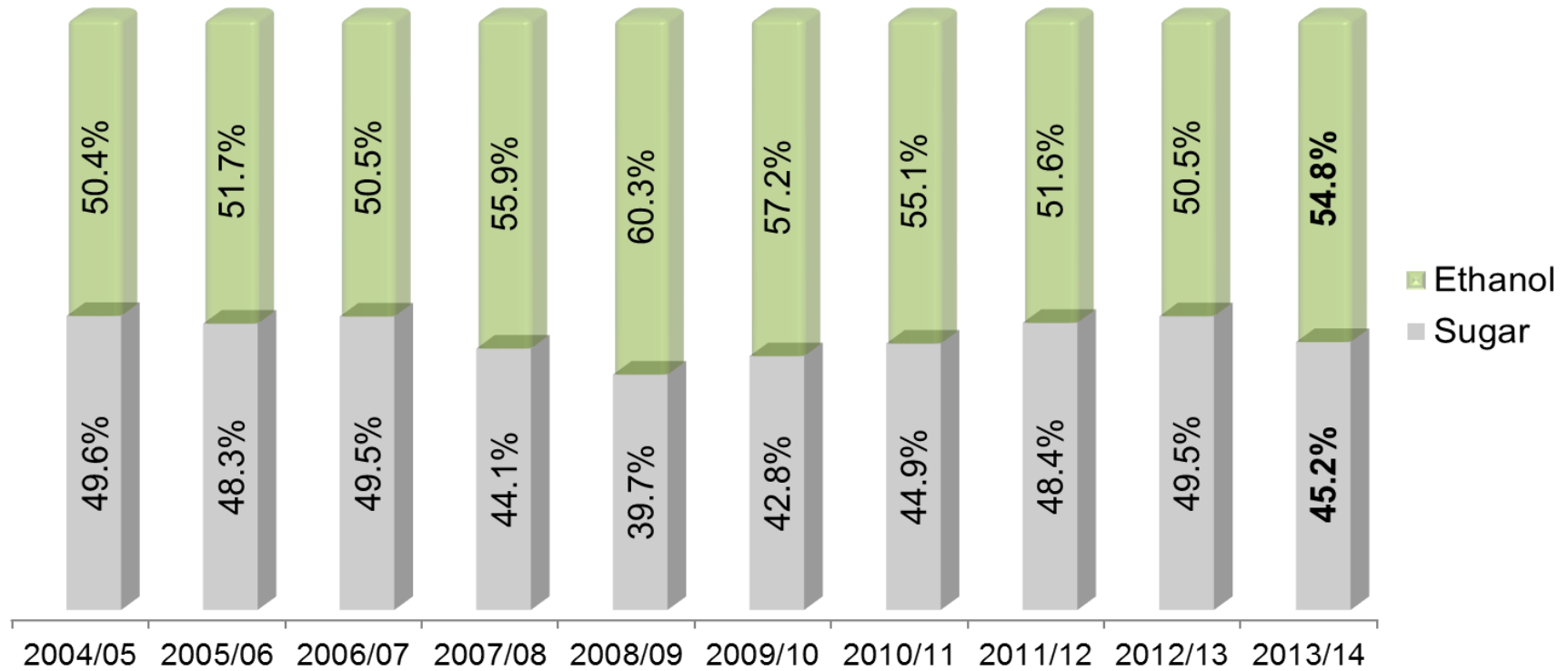
Source: UNICA. Note: data include corn ethanol production and reprocessing (ie, the final amount refers to the direct production of hydrous ethanol plus the converted volume of anhydrous into hydrous ethanol).

**Table 10.** Bi-weekly ethanol mix (%) of South-Central region

Bi-weekly period	ETHANOL MIX (%)					
	São Paulo		South-Central region		Others states	
	2012/2013	2013/2014	2012/2013	2013/2014	2012/2013	2013/2014
01/04	33.03	65.95	85.25	67.50		69.26
16/04	60.88	66.32	62.98	70.95	64.72	80.24
01/05	55.92	54.51	59.95	58.19	64.10	64.86
16/05	50.82	51.62	54.89	56.35	59.36	65.46
01/06	47.31	51.95	51.69	58.34	59.49	68.62
16/06	47.95	51.92	54.29	57.74	61.77	66.32
01/07	46.49	51.11	52.21	58.20	60.26	69.53
16/07	44.47	47.86	49.76	54.54	58.36	64.78
01/08	43.92	47.92	49.41	54.91	57.86	65.18
16/08	42.96	45.31	48.50	52.11	57.59	62.57
01/09	43.07	44.65	48.42	51.30	57.24	61.51
16/09	43.16	43.85	48.44	50.72	57.05	61.89
01/10	46.21	46.04	51.44	53.10	58.97	63.09
16/10	43.99	46.66	48.55	53.68	56.75	63.67
01/11	43.92	46.29	48.73	52.01	56.64	61.93
16/11	45.31	46.78	49.72	52.06	58.99	61.28
01/12	45.43	50.41	49.49	56.17	58.44	65.99
16/12	49.22	56.24	53.52	59.67	64.61	65.64

Source: UNICA. Note: ethanol mix was calculated excluding corn ethanol production registered.

Use of sugarcane in South-Central region. Values in %.

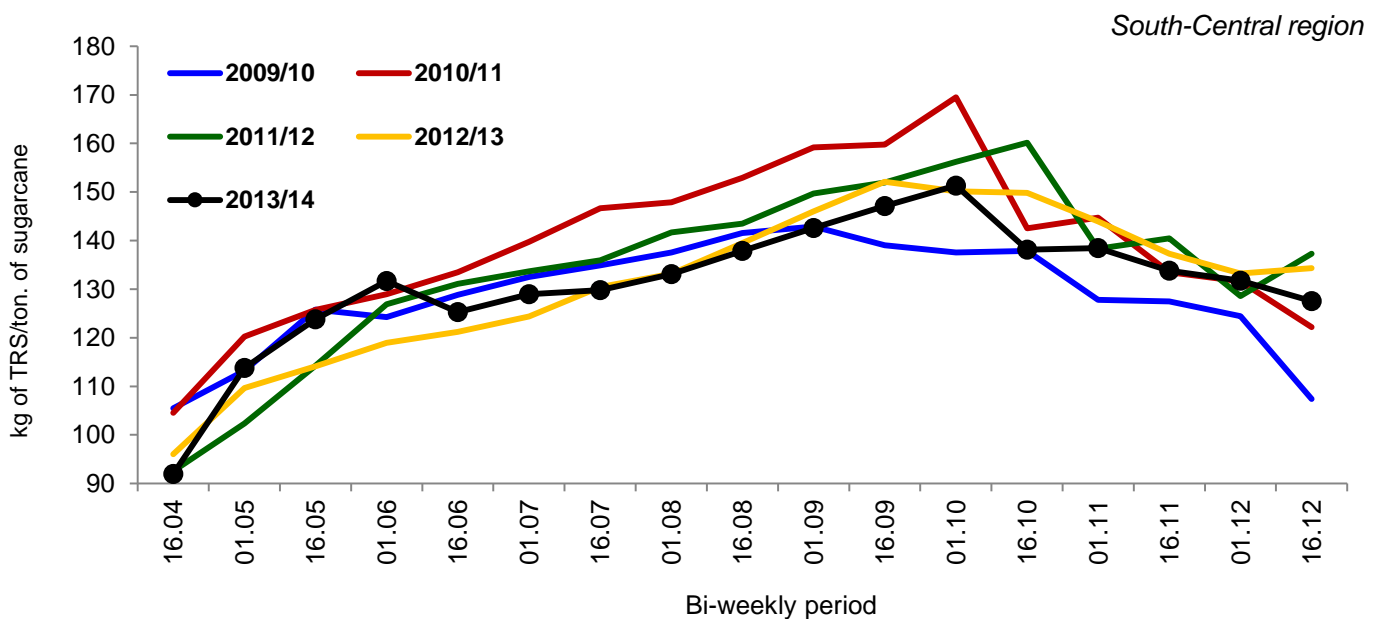


Source: UNICA.

**Table 11.** Bi-weekly sugarcane quality index (kg of TRS per ton of sugarcane) for South-Central region

Bi-weekly period	kg of TRS/ ton. of sugarcane					
	São Paulo		South-Central region		Others states	
	2012/2013	2013/2014	2012/2013	2013/2014	2012/2013	2013/2014
16/04	90.09	91.00	96.02	91.98	101.54	94.01
01/05	112.93	115.37	109.66	113.76	106.50	110.94
16/05	109.99	124.81	114.11	123.79	118.98	121.89
01/06	119.22	134.26	118.97	131.68	118.51	127.73
16/06	120.09	124.67	121.22	125.26	122.57	126.15
01/07	122.96	129.10	124.34	128.95	126.35	128.72
16/07	130.13	128.87	130.43	129.81	130.94	131.27
01/08	131.97	132.06	133.19	133.12	135.11	134.69
16/08	138.93	137.90	139.46	137.86	140.34	137.79
01/09	145.37	141.76	146.01	142.59	147.09	143.87
16/09	151.54	146.42	152.10	147.11	153.03	148.25
01/10	149.16	151.79	150.14	151.33	151.57	150.67
16/10	149.27	136.77	149.80	138.12	150.75	140.09
01/11	143.80	139.25	143.93	138.42	144.15	137.02
16/11	137.28	135.44	137.29	133.81	137.30	131.05
01/12	133.67	133.90	133.20	131.71	132.17	128.13
16/12	135.25	128.08	134.29	126.95	131.89	125.02

Source: UNICA. Note: data exclude corn ethanol production.



**Table 12.** Historical series of sugarcane quality (kg of TRS per ton of sugarcane) and the number of new mills and closed mills, per harvest season, in South-Central region.

Harvest season	Average TRS (kg TRS/ ton of sugarcane)	Number of new mills	Number of closed mills
2007/2008	143.63	22	2
2008/2009	140.11	29	2
2009/2010	129.56	21	3
2010/2011	140.50	10	5
2011/2012	137.54	3	14
2012/2013	135.57	2	13
2013/2014	133.32	2	9
2014/2015e	135.00	1	10

Source: UNICA. Note: "e" - estimate.

**Table 13.** Ethanol sales by mills in South-Central region, per ethanol type and destination (m<sup>3</sup>).

Product	Month	Total		External market		Domestic market	
		2012/2013	2013/2014	2012/2013	2013/2014	2012/2013	2013/2014
Total ethanol	Apr	1,392,589	1,637,813	73,115	68,414	1,319,474	1,569,399
	May	1,658,059	2,095,419	151,794	233,788	1,506,265	1,861,631
	Jun	1,677,099	2,215,116	233,801	451,857	1,443,298	1,763,259
	Jul	1,932,668	2,524,943	425,803	458,615	1,506,865	2,066,328
	Aug	2,091,209	2,561,978	480,847	360,497	1,610,362	2,201,481
	Sep	1,969,254	2,251,197	478,484	307,829	1,490,770	1,943,368
	Oct	2,157,024	2,238,695	426,734	169,930	1,730,290	2,068,765
	Nov	2,119,669	2,013,124	439,244	97,910	1,680,425	1,915,214
	Dec	1,892,424	1,995,045	300,763	140,815	1,591,661	1,854,230
	Jan	2,031,901	2,207,308	229,561	85,897	1,802,340	2,121,411
	Feb	1,610,378	1,924,166	115,358	78,517	1,495,020	1,845,649
	Mar	1,603,427	2,007,207	102,169	117,201	1,501,258	1,890,006
	<b>Total</b>		<b>22,135,701</b>	<b>25,672,011</b>	<b>3,457,673</b>	<b>2,571,270</b>	<b>18,678,028</b>
Anhydrous ethanol	Apr	528,735	603,884	54,601	50,768	474,134	553,116
	May	645,728	971,646	119,235	199,324	526,493	772,322
	Jun	754,031	1,073,468	190,586	338,104	563,445	735,364
	Jul	868,606	1,214,412	285,213	357,473	583,393	856,939
	Aug	895,265	1,156,663	318,270	225,268	576,995	931,395
	Sep	861,832	927,849	330,093	159,120	531,739	768,729
	Oct	869,694	846,511	248,928	39,476	620,766	807,035
	Nov	858,615	785,870	257,413	29,011	601,202	756,859
	Dec	764,376	794,045	181,516	72,164	582,860	721,881
	Jan	755,458	878,794	94,064	34,975	661,394	843,819
	Feb	643,620	784,509	102,222	53,665	541,398	730,844
	Mar	715,357	977,971	87,153	72,823	628,204	905,148
	<b>Total</b>		<b>9,161,317</b>	<b>11,015,622</b>	<b>2,269,294</b>	<b>1,632,171</b>	<b>6,892,023</b>
Hydrous ethanol	Apr	863,854	1,033,929	18,514	17,646	845,340	1,016,283
	May	1,012,331	1,123,773	32,559	34,464	979,772	1,089,309
	Jun	923,068	1,141,648	43,215	113,753	879,853	1,027,895
	Jul	1,064,062	1,310,531	140,590	101,142	923,472	1,209,389
	Aug	1,195,944	1,405,315	162,577	135,229	1,033,367	1,270,086
	Sep	1,107,422	1,323,348	148,391	148,709	959,031	1,174,639
	Oct	1,287,330	1,392,184	177,806	130,454	1,109,524	1,261,730
	Nov	1,261,054	1,227,254	181,831	68,899	1,079,223	1,158,355
	Dec	1,128,048	1,201,000	119,247	68,651	1,008,801	1,132,349
	Jan	1,276,443	1,328,514	135,497	50,922	1,140,946	1,277,592
	Feb	966,758	1,139,657	13,136	24,852	953,622	1,114,805
	Mar	888,070	1,029,236	15,016	44,378	873,054	984,858
	<b>Total</b>		<b>12,974,384</b>	<b>14,656,389</b>	<b>1,188,379</b>	<b>939,099</b>	<b>11,786,005</b>

Source: UNICA. Note: data includes ethanol for fuel, industrial purposes, beverage production and the volume destined to own consumption by mills; it also includes the imports by producers and non-producers.

**Table 14.** Monthly sales by mills in South-Central region - ethanol for other uses (m<sup>3</sup>)

Product	Month	Total			Anhydrous ethanol			Hydrous ethanol		
		2012/2013	2013/2014	Var. (%)	2012/2013	2013/2014	Var. (%)	2012/2013	2013/2014	Var. (%)
Ethanol for other uses	Apr	57,748	93,252	↑ 61.48%	15,926	19,528	↑ 22.62%	41,822	73,724	↑ 76.28%
	May	86,795	88,307	↑ 1.74%	13,493	15,050	↑ 11.54%	73,302	73,257	↓ -0.06%
	Jun	84,115	87,768	↑ 4.34%	16,629	19,579	↑ 17.74%	67,486	68,189	↑ 1.04%
	Jul	98,273	136,846	↑ 39.25%	15,320	21,401	↑ 39.69%	82,953	115,445	↑ 39.17%
	Aug	107,793	110,770	↑ 2.76%	17,672	17,666	↓ -0.03%	90,121	93,104	↑ 3.31%
	Sep	101,962	93,128	↓ -8.66%	19,469	19,556	↑ 0.45%	82,493	73,572	↓ -10.81%
	Oct	109,474	105,217	↓ -3.89%	25,625	20,054	↓ -21.74%	83,849	85,163	↑ 1.57%
	Nov	104,237	82,385	↓ -20.96%	17,632	16,791	↓ -4.77%	86,605	65,594	↓ -24.26%
	Dec	91,291	56,092	↓ -38.56%	13,967	17,312	↑ 23.95%	77,324	38,780	↓ -49.85%
	Jan	119,920	95,985	↓ -19.96%	37,032	19,479	↓ -47.40%	82,888	76,506	↓ -7.70%
	Feb	85,913	88,532	↑ 3.05%	13,260	21,194	↑ 59.83%	72,653	67,338	↓ -7.32%
	Mar	106,530	71,151	↓ -33.21%	33,007	14,419	↓ -56.32%	73,523	56,732	↓ -22.84%
	<b>Total</b>		<b>1,154,051</b>	<b>1,109,433</b>	<b>↓ -3.87%</b>	<b>239,032</b>	<b>222,029</b>	<b>↓ -7.11%</b>	<b>915,019</b>	<b>887,404</b>

Source: UNICA. Note: ethanol sales destined to the domestic market shown in Table 13 include the volume of ethanol fuel traded, ethanol for other purposes (shown in the table above), imports, losses and own use by mills.



**Table 15.** Sugar exports by South-Central region of Brazil (thousand tons).

Month	Harvest season		Var. (%)
	2012/2013	2013/2014	
April	265	1,354	↑ 410.47%
May	1,623	1,775	↑ 9.37%
June	1,617	2,200	↑ 36.09%
July	2,470	2,297	↓ -7.01%
August	2,450	3,297	↑ 34.57%
September	2,634	2,521	↓ -4.31%
October	3,673	2,592	↓ -29.44%
November	2,531	2,176	↓ -14.03%
Dezember	2,132	1,971	↓ -7.59%
January	1,794	1,918	↑ 6.93%
February	1,432	1,482	↑ 3.45%
March	1,690	1,377	↓ -18.49%
<b>Total</b>	<b>24,312</b>	<b>24,959</b>	<b>↑ 2.66%</b>

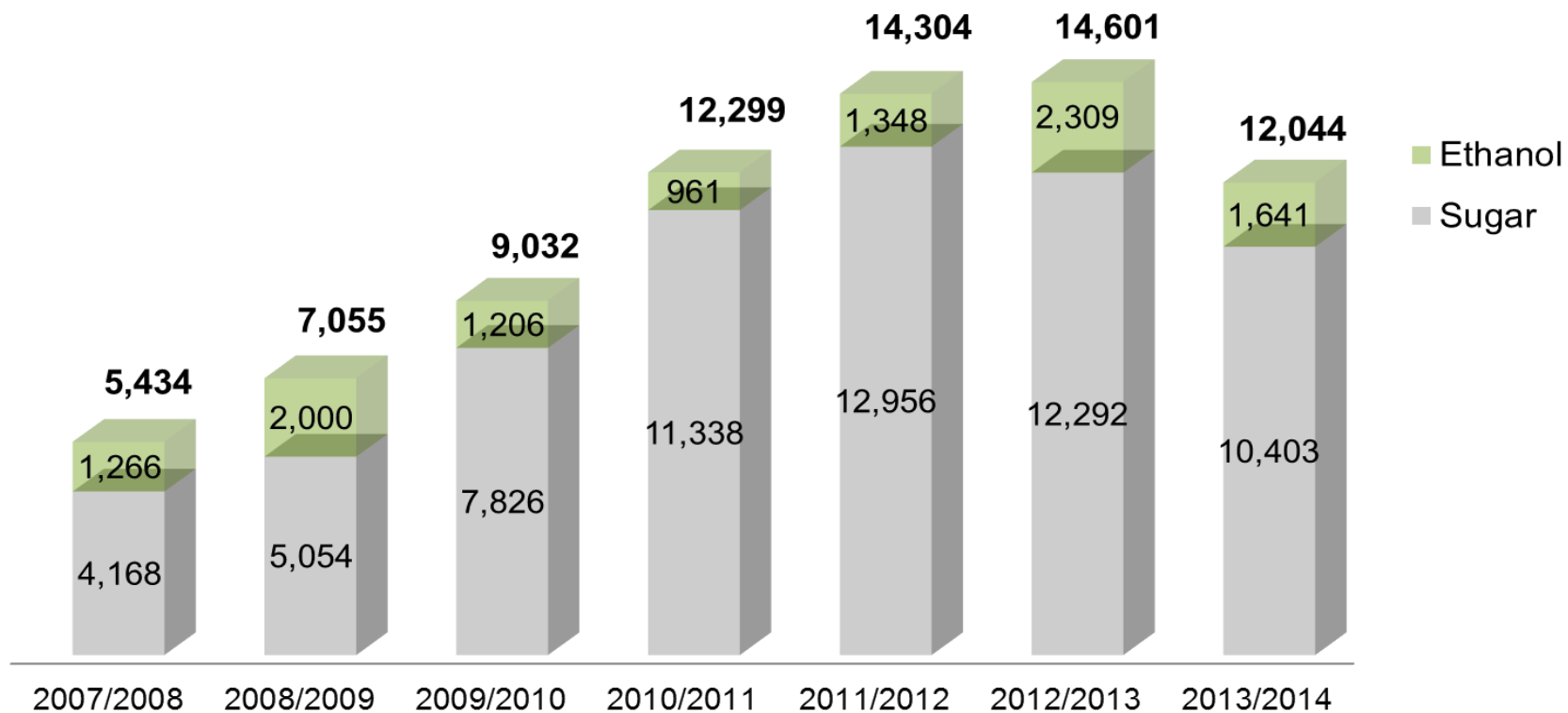
Source: Secex. Elaboration: UNICA.

**Table 16.** Ethanol imports by South-Central region of Brazil (m<sup>3</sup>).

Month	Harvest season		Var. (%)
	2012/2013	2013/2014	
April	61,676	28	↓ -99.95%
May	17,306	32	↓ -99.82%
June	2,109	28	↓ -98.67%
July	28	112	↑ 302.51%
August	75	1	↓ -98.48%
September	61	59	↓ -3.26%
October	55	3	↓ -94.41%
November	65	19	↓ -71.33%
Dezember	29	15	↓ -47.14%
January	56	12	↓ -78.56%
February	82	35,933	↑ 43885%
March	1,129	38,035	↑ 3268%
<b>Total</b>	<b>82,671</b>	<b>74,277</b>	<b>↓ -10.15%</b>
Share of ethanol imports from USA	99.06%	99.40%	
Imports as a share of ethanol consumption	0.55%	0.41%	

Source: Secex (for imports, considering the place of unloading) and ANP (for consumption data). Elaboration: UNICA.

**Sugar and ethanol export revenues generated by Brazilian South-Central region (million US\$)**



Source: Secex. Elaboration: UNICA. Note: data from South-Central region has been compiled according to the state where the exporting company is located.

**Table 17.** Ethanol conversion in South-Central region of Brazil (m<sup>3</sup>).

Month	Conversion of anhydrous ethanol into hydrous ethanol		Conversion of hydrous ethanol into anhydrous ethanol	
	2012/2013	2013/2014	2012/2013	2013/2014
April	129.6	39.7	6.5	17.0
May	15.6	2.5	27.9	30.1
June	1.2	5.2	42.4	56.7
July	2.5	2.5	62.8	46.0
August	3.5	0.7	68.4	61.8
September	0.6	0.5	64.1	84.2
October	0.3	0.5	81.4	95.1
November	0.3	1.4	89.4	89.9
Dezember	1.2	2.6	46.4	58.4
January	4.9	7.7	6.3	9.8
February	47.5	19.7	4.7	15.9
March	82.4	28.6	4.0	4.9
<b>Total</b>	<b>289.5</b>	<b>111.6</b>	<b>504.2</b>	<b>569.7</b>

Source: UNICA.

**Table 18.** Ethanol supply & demand balance in South-Central region of Brazil. Volume in thousand m<sup>3</sup>.

	<b>Anhydrous ethanol</b>	<b>Hydrous ethanol</b>	<b>Total</b>
<b>Stock in April 1, 2013 - 2013/2014 harvest season</b>	<b>626</b>	<b>499</b>	<b>1,125</b>
<b>Production during 2013/2014 harvest season beginning in 04/01/2013(*)</b>	<b>11,086</b>	<b>14,619</b>	<b>25,705</b>
<b>Sales to domestic market - April 2013 to March 2014</b>	<b>9,383</b>	<b>13,717</b>	<b>23,101</b>
<i>Sales of fuel ethanol</i>	9,124	12,682	21,806
<i>Sales of ethanol for industrial purposes and to own consumption by mills</i>	259	1,035	1,295
<b>Sales to external market - April 2013 to March 2014</b>	<b>1,632</b>	<b>939</b>	<b>2,571</b>
<b>Stock in April 1, 2014 - 2013/2014 harvest season</b>	<b>696</b>	<b>462</b>	<b>1,158</b>

Source: UNICA. Note: \*production include the volume of hydrous ethanol converted into anhydrous ethanol (vice versa), the imports by producers and non-producers, corn ethanol production and the volume produced in March regarding the new harvest season (2014/2015).

**Table 19.** Sugar supply & demand balance in South-Central region of Brazil. Values in thousand tons.

	2012/2013	2013/2014	Var. (%)
Initial stock	1,695	1,910	↑ 12.69%
Production	34,097	34,295	↑ 0.58%
Exports*	24,312	24,959	↑ 2.66%
Domestic market**	9,570	9,325	↓ -2.56%
Final stock	1,910	1,921	↑ 0.54%

Source: UNICA and Secex. Note: \*export data provided by Secex; \*\*domestic market calculated by the difference between the sum of the initial stock and production, minus sales to external market and the stock registered at the end of the harvest season.

**Table 20.** Average prices of TRS and of the sugarcane delivered by growers in São Paulo state. Nominal values.

Harvest season	Kg of TRS/ ton. of sugarcane	R\$/ton. of sugarcane	R\$/ton. of sugarcane	
			Sugarcane destined to sugar production	Sugarcane destined to ethanol production
2007/2008	143.85	35.14	32.86	37.14
2008/2009	141.80	39.45	39.49	39.43
2009/2010	130.26	45.49	51.87	39.99
2010/2011	141.07	56.74	62.19	51.68
2011/2012	137.71	69.10	72.71	64.70
2012/2013	135.43	64.03	68.08	59.20
2013/2014	133.45	61.01	59.65	62.44

Source: Consecana, Orplana and UNICA. Elaboration: UNICA.

**Table 21.** Corn ethanol production in South Central region during 2013/2014 harvest season (m<sup>3</sup>).

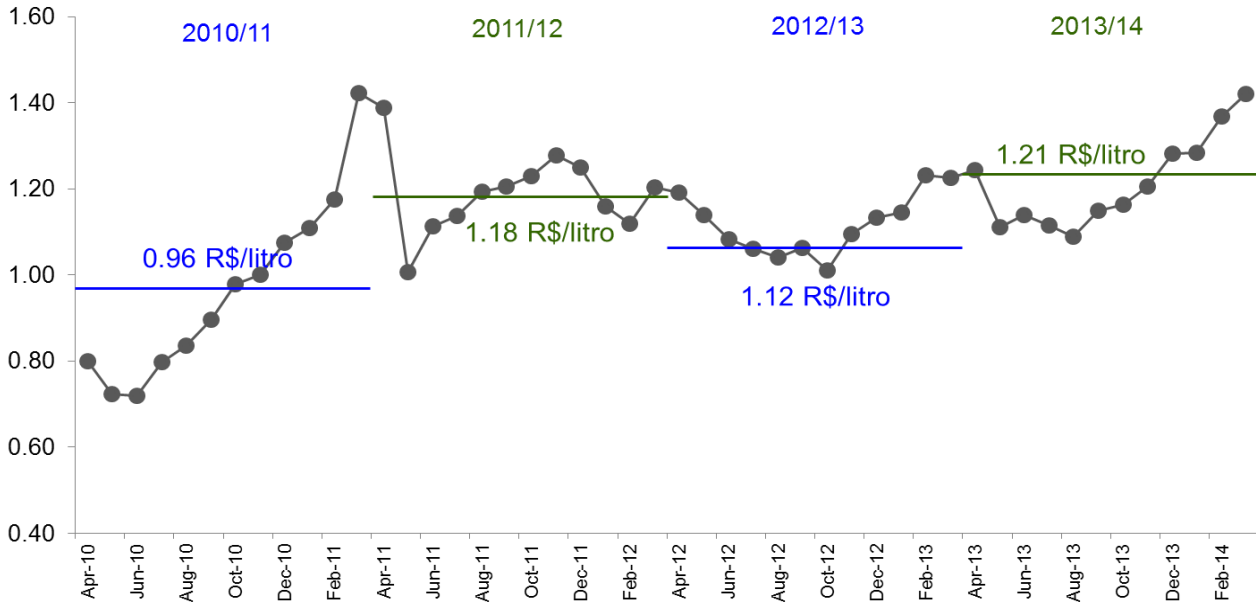
Bi-weekly period	CORN ETHANOL PRODUCTION					
	Bi-weekly production			Accumulated production		
	Anhydrous	Hydrous	Total	Anhydrous	Hydrous	Total
16/02	0	0	0	0	0	0
01/03	0	0	0	0	0	0
16/03	0	0	0	0	0	0
01/04	0	0	0	0	0	0
16/04	0	0	0	0	0	0
01/05	0	0	0	0	0	0
16/05	0	0	0	0	0	0
01/06	0	0	0	0	0	0
16/06	0	0	0	0	0	0
01/07	0	0	0	0	0	0
16/07	0	0	0	0	0	0
01/08	0	0	0	0	0	0
16/08	0	0	0	0	0	0
01/09	0	0	0	0	0	0
16/09	0	0	0	0	0	0
01/10	0	0	0	0	0	0
16/10	0	0	0	0	0	0
01/11	0	0	0	0	0	0
16/11	0	0	0	0	0	0
01/12	0	0	0	0	0	0
16/12	2,448	3,724	6,172	2,448	3,724	6,172
01/01	884	3,460	4,344	3,332	7,184	10,516
16/01	590	6,896	7,486	3,922	14,080	18,002
01/02	469	4,682	5,151	4,391	18,762	23,153
16/02	425	4,538	4,963	4,816	23,300	28,116
01/03	77	3,678	3,755	4,893	26,978	31,871
16/03	0	3,460	3,460	4,893	30,438	35,331
01/04	0	1,705	1,705	4,893	32,143	37,036

Source: UNICA.

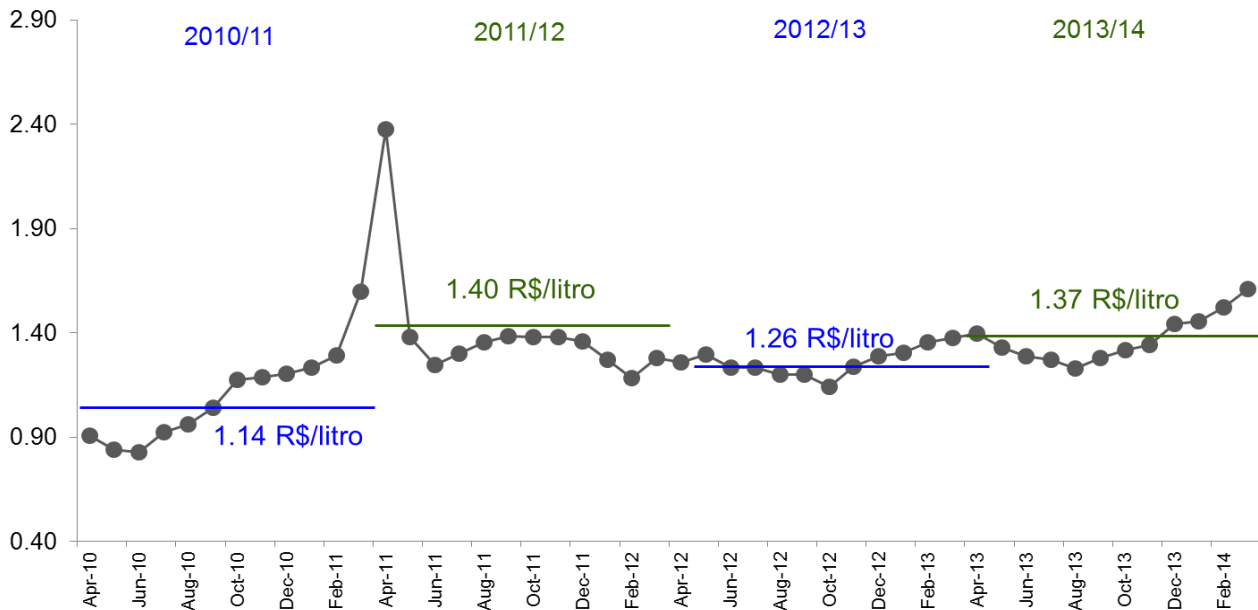


## Monthly prices received by producers in São Paulo state - ethanol

Fuel hydrous ethanol (R\$/liter)



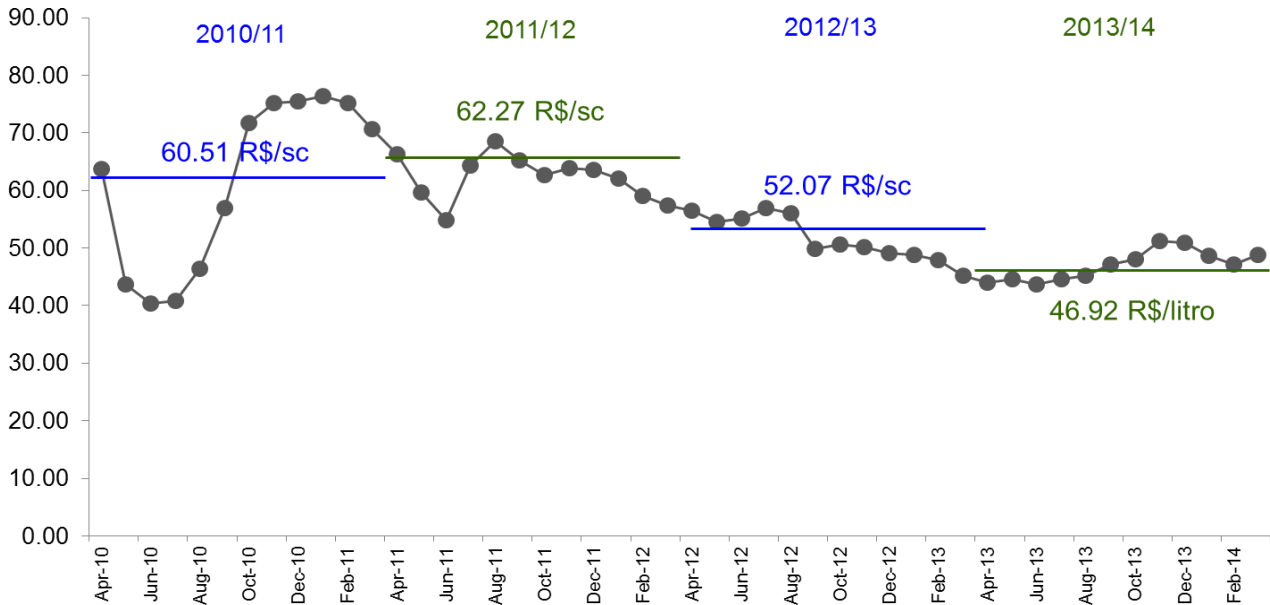
Fuel anhydrous ethanol (R\$/liter)



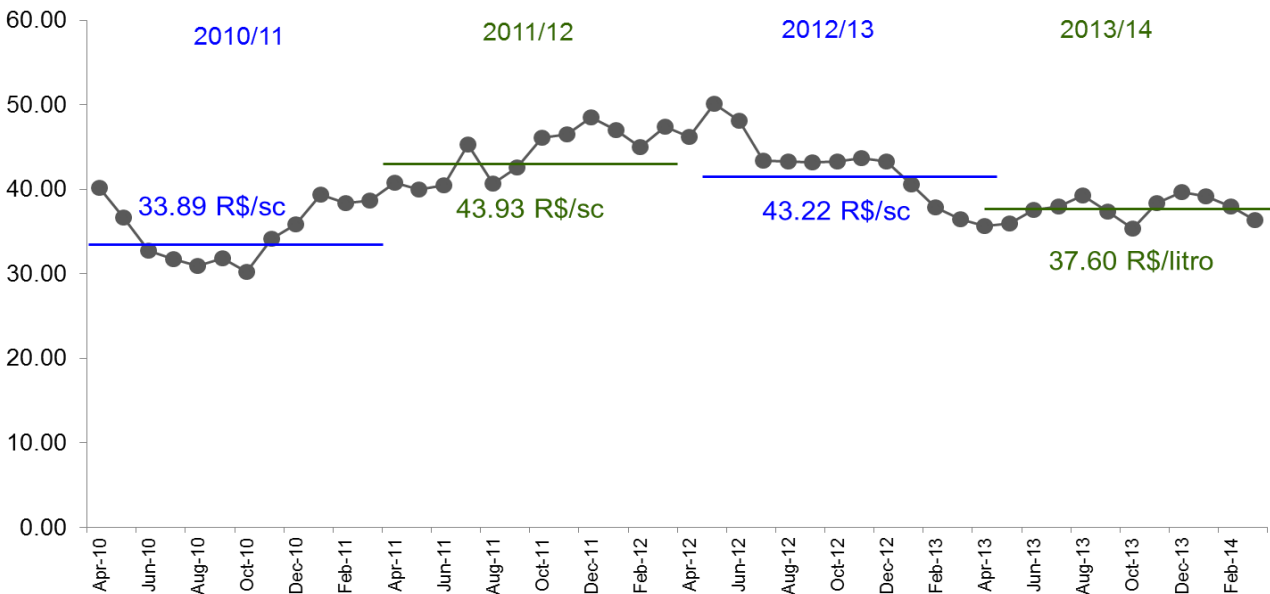
Source: CEPEA. Elaboration: UNICA. Note: prices minus freight charges and taxes; highlighted values refer to the average prices of the harvest season and they are calculated considering the trading curve published by Consecana; nominal values.

## Monthly prices received by producers in São Paulo state - sugar

### White sugar - domestic market (R\$/ 50 kg bag)



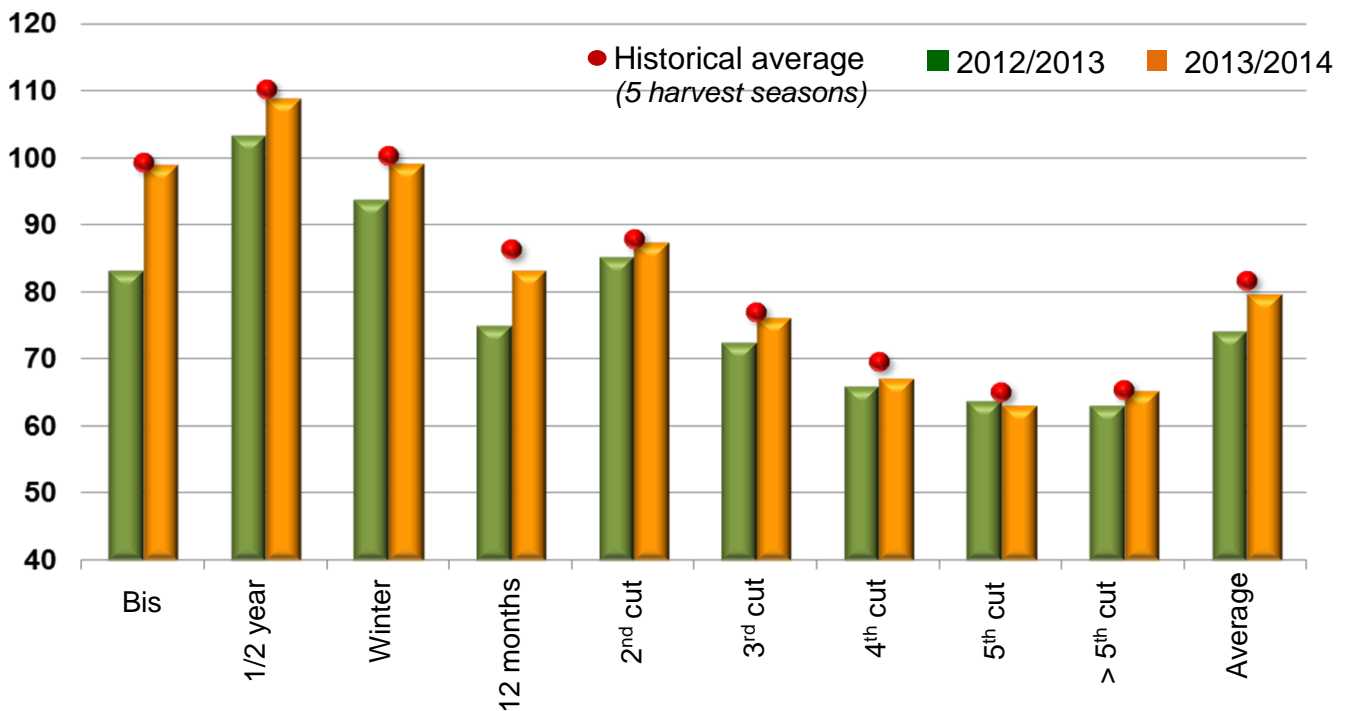
### Raw sugar - external market (R\$/ 50 kg bag)



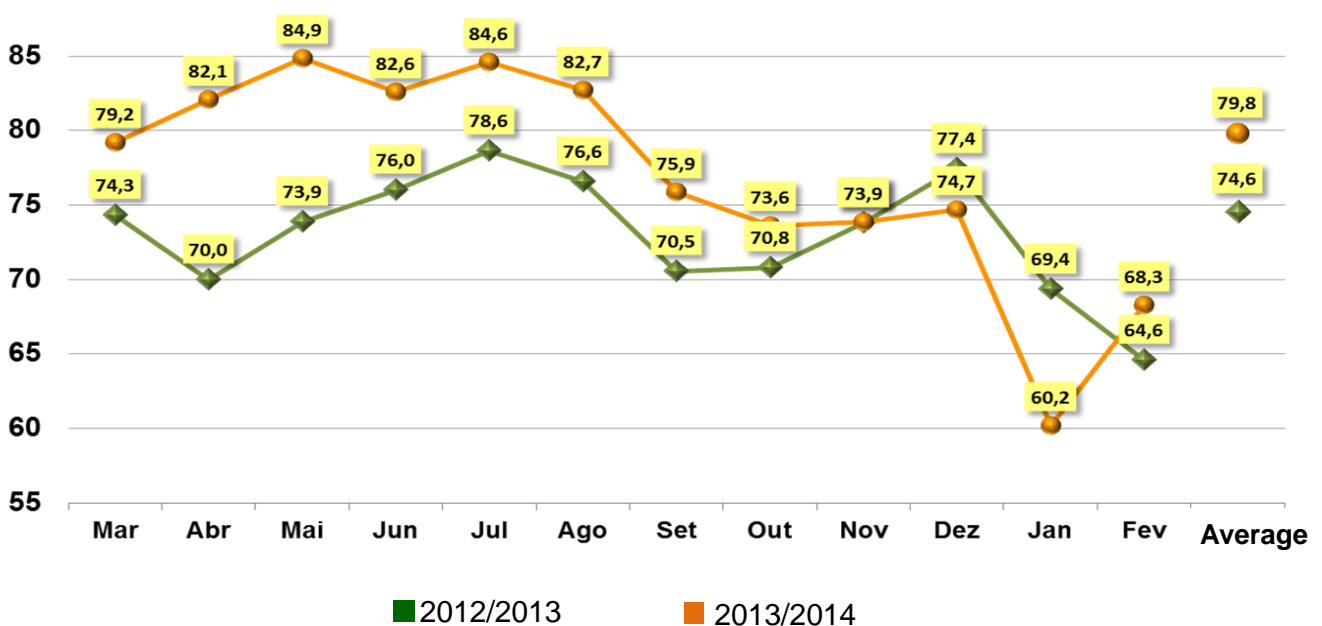
Source: CEPEA. Elaboration: UNICA. Note: prices minus freight charges but include taxes; highlighted values refer to the average prices of the harvest season and they are calculated considering the trading curve published by Consecana; monthly prices has been computed using a new methodology up to 2013/2014 harvest season; nominal values.

## Agricultural productivity in South-Central region of Brazil. Values in tons of sugarcane per hectare.

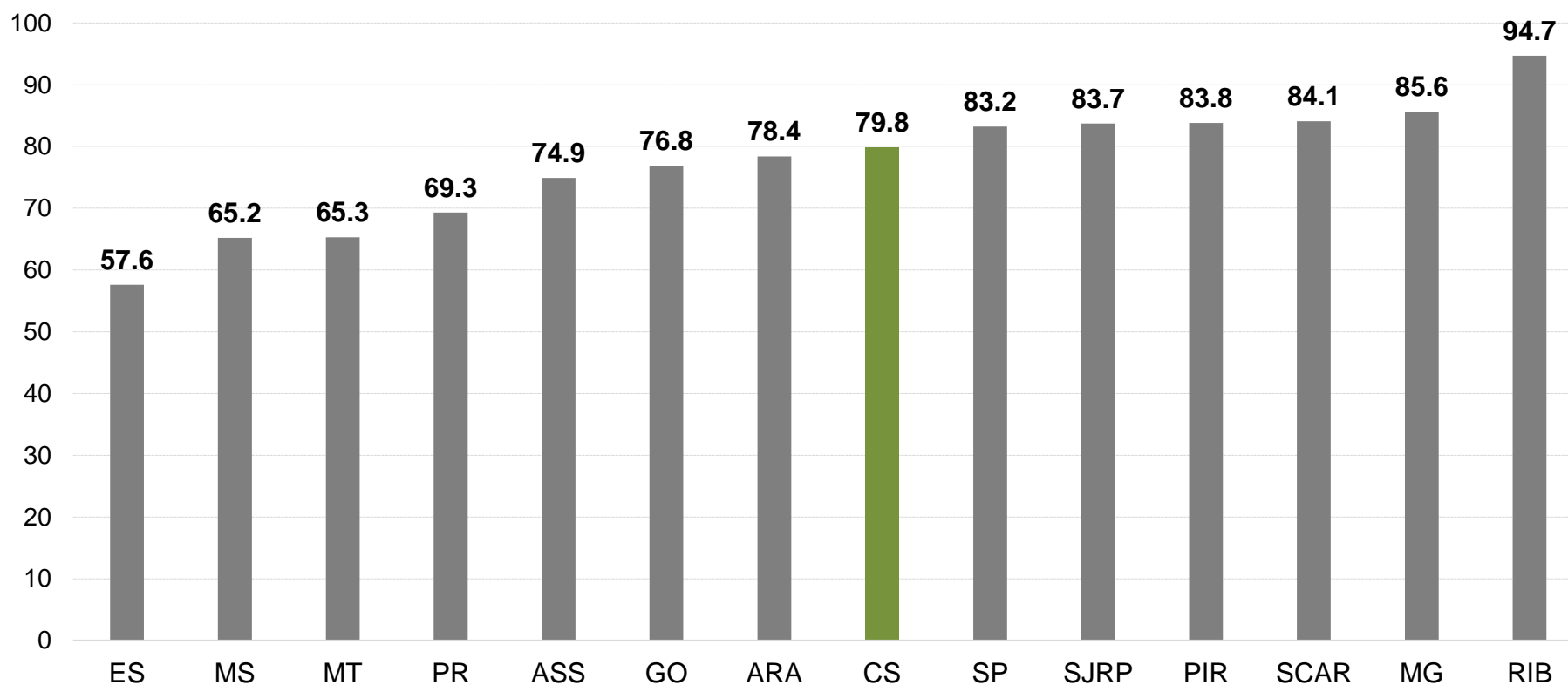
Agricultural productivity by sugarcane cutting stage - South-Central region of Brazil



Monthly agricultural productivity - South-Central region of Brazil



**Agricultural productivity per state of Brazilian South-Central region and cities of São Paulo state during 2013/2014 harvest season. Values in tons of sugarcane per hectare.**



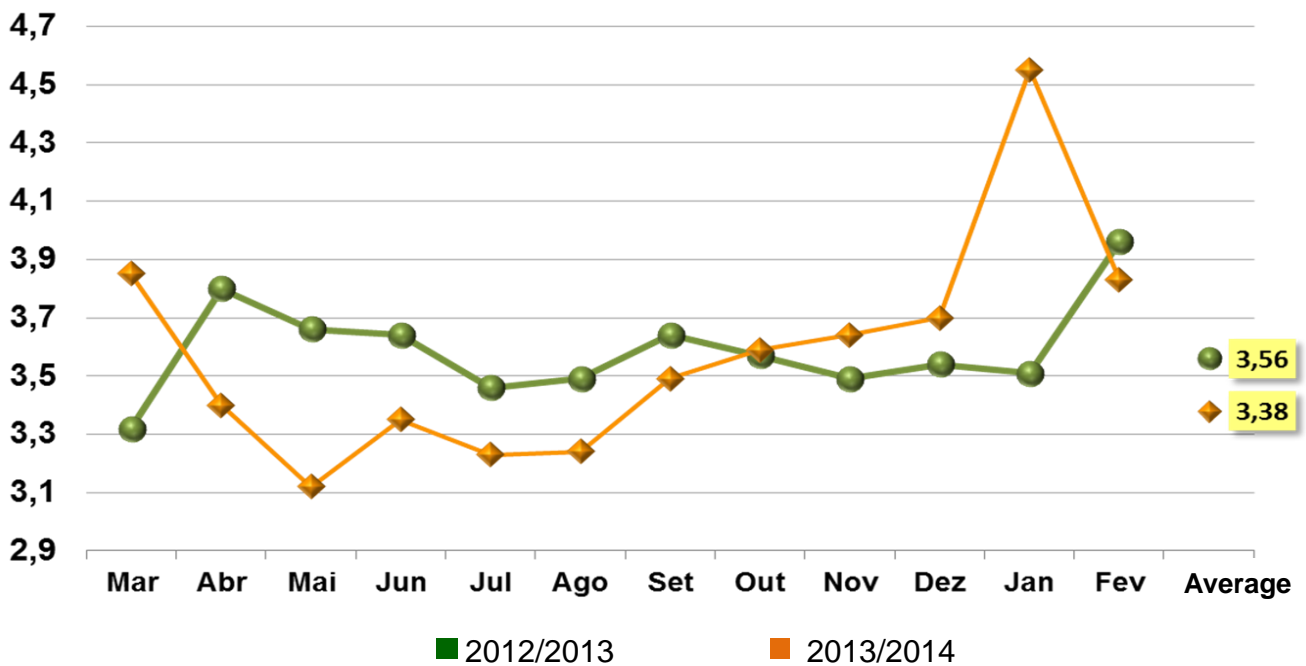
ASS: Assis. ARA: Araraquara. CS: South-Central region. SJRP: São José do Rio Preto. PIR: Piracicaba; SCAR: São Carlos; RIB: Ribeirão Preto.

## Renewal of sugarcane fields in South-Central region of Brazil

Renewal rate of sugarcane fields - South-Central region of Brazil. Values in % of the total cultivated area



Historical age of sugarcane field - South-Central region of Brazil. Values in years.



**Historical average agricultural productivity, by calendar year - South-Central region of Brazil. Values in tons of sugarcane per hectare.**



*Staff:*

**Antônio de Pádua Rodrigues**  
Technical Director

**Luciano Rodrigues**  
Economic Department Manager

**Celma Ramalho Gaudêncio**  
Business Intelligence Analyst

**Cleber dos Santos Valin**  
Planning Assistant

**Maria Andrade Pinheiro**  
Economic Analyst

**Mariana Regina Zechin**  
Economic Analyst

**Valdemir Nunes Machado**  
Systems Analyst

*Data released in this report has been compiled and analyzed by UNICA, with figures provided by mills and by the following associations of producers from South-Central states:*

- *Ethanol and sugar producers association in the state of Paraná (Alcopar);*
- *Bioenergy producers association of Mato Grosso do Sul (Biosul);*
- *Sugar and ethanol industries association in the state of Minas Gerais (SIAMIG);*
- *Association of ethanol industry of Goiás state (SIFAEG);*
- *Sugar and ethanol industry association of Mato Grosso (SINDALCOOL);*
- *Plants and distilleries society of Espírito Santo state (SUDES);*
- *“Fluminense” association of sugar and ethanol producers (SINDAAF).*

*Data regarding weather and agricultural conditions has been provided by the Center for Sugarcane Technology (CTC).*

This report has been prepared for informative purposes only and is available free of charge from [www.unica.com.br/unicadata](http://www.unica.com.br/unicadata).

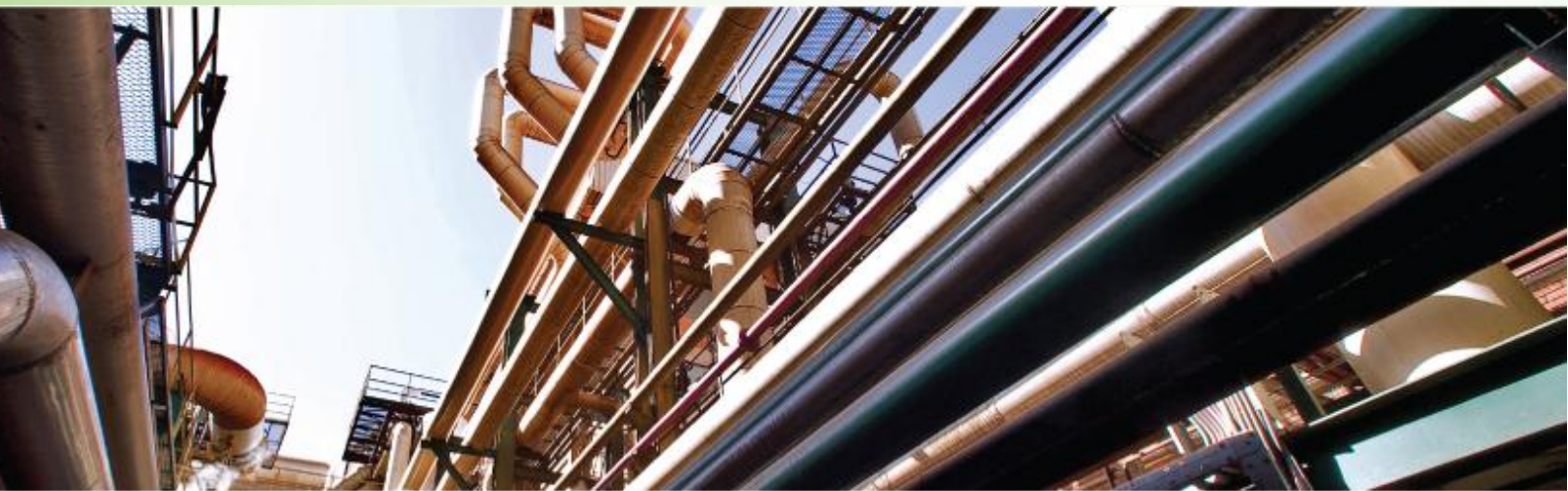
UNICA has endeavored to ensure that all data and information utilized are precise and obtained from credible sources. However, the organization is not responsible for decisions of any nature, financial or otherwise, that might be undertaken based on the contents of this report. Reproduction of this report, in whole or in part, in any form or by any means, is permitted only with The Brazilian Sugarcane Industry Association (UNICA) credited as the source.



BRAZILIAN SUGARCANE INDUSTRY ASSOCIATION

ETHANOL • SUGAR • ENERGY

BRAZIL



**BIOENERGIA**  
ALCOPAR / SIALPAR / SIAPAR



**BioSul**  
Associação dos Produtores de Bioenergia  
de Mato Grosso do Sul



**CTC**  
Centro de Tecnologia  
Canaveira



**SIAMIG**  
BIOENERGIA - ETANOL - AÇÚCAR  
Associação das Indústrias Sucroenergéticas de Minas Gerais



**SINDALCOOL/MT**  
SINDICATO DAS INDÚSTRIAS SUCROALCOOLEIRAS  
DO ESTADO DE MATO GROSSO

**SINDAAF**

**SIFAEG**

SINDICATO DA INDÚSTRIA DE FABRICAÇÃO  
DE ETANOL DO ESTADO DE GOIÁS  
GOIÁS ETHANOL INDUSTRY ASSOCIATION

**SIFAÇUCAR**

SINDICATO DA INDÚSTRIA DE FABRICAÇÃO  
DE AÇÚCAR DO ESTADO DE GOIÁS  
GOIÁS SUGAR INDUSTRY ASSOCIATION

**SUDES**