



**Final report of 2012/2013 harvest season**

**South-Central region**

**Table 1. 2012/2013 sugarcane harvest in South-Central Brazil - final numbers**  
Comparison with 2011/2012 crop year

Products	Crop year			
	2011/2012	2012/2013	Var. (%)	
Sugarcane <sup>1</sup>	493,159	532,758	↑ 8.03%	
Sugar <sup>1</sup>	31,304	34,097	↑ 8.92%	
Anhydrous ethanol <sup>2</sup>	7,454	8,730	↑ 17.12%	
Hydrous ethanol <sup>2</sup>	13,089	12,632	↓ -3.49%	
Total ethanol <sup>2</sup>	20,542	21,362	↑ 3.99%	
ATR <sup>1</sup>	67,830	72,228	↑ 6.48%	
ATR/ ton of sugarcane <sup>3</sup>	137.54	135.57	↓ -1.43%	
Share (%)	sugar	48.44%	49.54%	↑
	ethanol	51.56%	50.46%	↓
Liters of ethanol/ ton of sugarcane	41.65	40.10	↓ -3.74%	
Kilograms of sugar/ ton of sugarcane	63.48	64.00	↑ 0.83%	

Source: UNICA. Note: <sup>1</sup> - thousand tons; <sup>2</sup> - million liters; <sup>3</sup> - kg of ATR/ ton of sugarcane; "ATR" is the amount of product obtained per ton of crushed sugarcane.

**Table 2.** Final figures of 2012/2013 harvest season in South-Central region of Brazil  
Comparison with 2013/2014 crop year projection

Products	Crop year			
	2012/2013	2013/2014	Var. (%)	
Sugarcane <sup>1</sup>	532,758	589,600	↑ 10.67%	
Sugar <sup>1</sup>	34,097	35,500	↑ 4.11%	
Anhydrous ethanol <sup>2</sup>	8,730	11,200	↑ 28.30%	
Hydrous ethanol <sup>2</sup>	12,632	14,171	↑ 12.18%	
Total ethanol <sup>2</sup>	21,362	25,371	↑ 18.77%	
ATR <sup>1</sup>	72,228	80,600	↑ 11.59%	
ATR/ ton of sugarcane <sup>3</sup>	135.57	136.70	↑ 0.83%	
Share (%)	sugar	49.54%	46.22%	↓
	ethanol	50.46%	53.78%	↑
Liters of ethanol/ ton of sugarcane	40.10	43.03	↑ 7.32%	
Kilograms of sugar/ ton of sugarcane	64.00	60.21	↓ -5.92%	
Sugar available for exports <sup>1</sup>	24,312	25,800	↑ 6.12%	
Ethanol exports <sup>2</sup>	3,458	2,700	↓ -21.92%	

Source: UNICA. Note: <sup>1</sup> - thousand tons; <sup>2</sup> - million liters; <sup>3</sup> - kg of TRS/ ton of sugarcane; "TRS" is the amount of product obtained per ton of crushed sugarcane.

**Table 3. Sugarcane harvest per State of South-Central region**

STATE	Sugarcane <sup>1</sup>		Sugar <sup>1</sup>		Total ethanol <sup>2</sup>		Anhydrous ethanol <sup>2</sup>		Hydrous ethanol <sup>2</sup>	
	2011/12	2012/13	2011/12	2012/13	2011/12	2012/13	2011/12	2012/13	2011/12	2012/13
ES	4,180,168	3,519,207	122,235	98,762	224,106	177,626	143,095	108,965	81,011	68,661
GO	45,220,066	52,726,898	1,752,299	1,875,260	2,677,000	3,129,934	668,057	806,408	2,008,943	2,323,526
MT	13,153,709	16,318,765	398,192	491,919	843,942	974,685	320,807	447,279	523,135	527,406
MS	33,859,650	37,330,449	1,587,746	1,741,908	1,631,250	1,916,972	430,842	467,751	1,200,408	1,449,221
MG	49,741,239	51,759,457	3,238,089	3,418,321	2,083,987	1,993,713	780,523	869,786	1,303,464	1,123,927
PR	40,505,746	39,725,948	3,007,991	3,086,138	1,402,054	1,299,344	367,689	429,267	1,034,365	870,077
RJ	2,173,750	1,421,948	129,666	95,342	75,758	37,469	0	0	75,758	37,469
RS	95,054	32,852	0	0	6,570	1,665	0	0	6,570	1,665
SP	304,229,861	329,922,736	21,067,954	23,289,350	11,597,637	11,830,466	4,742,656	5,600,398	6,854,981	6,230,068
<b>TOTAL</b>	<b>493,159,243</b>	<b>532,758,260</b>	<b>31,304,172</b>	<b>34,097,000</b>	<b>20,542,304</b>	<b>21,361,874</b>	<b>7,453,669</b>	<b>8,729,854</b>	<b>13,088,635</b>	<b>12,632,020</b>

STATE	Kg TRS/ton of sugarcane		Kg of sugar/ton of sugarcane		Liters of ethanol/ ton of sugar		Sugar mix (%)		Ethanol mix (%)	
	2011/12	2012/13	2011/12	2012/13	2011/12	2012/13	2011/12	2012/13	2011/12	2012/13
ES	123.05	116.31	29.24	28.06	53.61	50.47	24.94%	25.32%	75.06%	74.68%
GO	140.97	137.94	38.75	35.57	59.20	59.36	28.85%	27.06%	71.15%	72.94%
MT	141.09	133.75	30.27	30.14	64.16	59.73	22.52%	23.65%	77.48%	76.35%
MS	130.89	135.96	46.89	46.66	48.18	51.35	37.60%	36.02%	62.40%	63.98%
MG	139.69	135.10	65.10	66.04	41.90	38.52	48.91%	51.30%	51.09%	48.70%
PR	136.62	137.14	74.26	77.69	34.61	32.71	57.05%	59.45%	42.95%	40.55%
RJ	121.02	114.54	59.65	67.05	34.85	26.35	51.73%	61.44%	48.27%	38.56%
RS	115.85	84.95	0.00	0.00	69.12	50.68	0.00%	0.00%	0.00%	0.00%
SP	137.71	135.43	69.25	70.59	38.12	35.86	52.78%	54.70%	47.22%	45.30%
<b>TOTAL</b>	<b>137.54</b>	<b>135.57</b>	<b>63.48</b>	<b>64.00</b>	<b>41.65</b>	<b>40.10</b>	<b>48.44%</b>	<b>49.54%</b>	<b>51.56%</b>	<b>50.46%</b>

Source: UNICA. Note: <sup>1</sup> - tons; <sup>2</sup> - m<sup>3</sup>.

**Table 4.** Sugarcane harvest by autonomous distilleries and mixed production mills in South-Central region

<b>Mills</b>	<b>2011/12</b>	<b>2012/13</b>
<b>Mixed production mills</b>		
Sugarcane <sup>1</sup>	423,093	456,832
Sugar <sup>1</sup>	31,304	34,097
Anhydrous ethanol <sup>2</sup>	6,102	6,986
Hydrous ethanol <sup>2</sup>	8,628	8,064
Total ethanol <sup>2</sup>	14,730	15,050
<b>Distilleries</b>		
Sugarcane <sup>1</sup>	70,066	75,926
Sugar <sup>1</sup>	0	0
Anhydrous ethanol <sup>2</sup>	1,352	1,744
Hydrous ethanol <sup>2</sup>	4,460	4,568
Total ethanol <sup>2</sup>	5,812	6,312

Source: UNICA. Note: <sup>1</sup> - thousand tons; <sup>2</sup> - million liters; autonomous distilleries are plants dedicated exclusively to ethanol production; mixed production mills are dedicated to producing both ethanol and sugar.

**Table 5.** Bi-weekly sugarcane crushing, ACCUMULATED - results for the South-Central region

Bi-weekly period	SUGARCANE (tons)								
	São Paulo State			South-Central region			Others states		
	2011/2012	2012/2013	Var. (%)	2011/20112	2012/2013	Var. (%)	2011/2012	2012/2013	Var. (%)
16/02	0	0	0%	0	62,407	0%	0	62,407	0%
01/03	0	0	0%	0	145,523	0%	0	145,523	0%
16/03	35,967	0	-100%	183,499	268,902	47%	147,532	268,902	82%
01/04	708,006	104,322	-85%	1,795,415	533,847	-70%	1,087,409	429,525	-61%
16/04	3,429,398	2,130,641	-38%	6,989,642	4,736,769	-32%	3,560,244	2,606,128	-27%
01/05	14,172,087	6,753,397	-52%	24,003,829	14,133,076	-41%	9,831,742	7,379,679	-25%
16/05	35,843,615	18,078,715	-50%	57,216,373	35,014,193	-39%	21,372,758	16,935,478	-21%
01/06	63,615,028	40,950,372	-36%	100,451,296	70,798,058	-30%	36,836,268	29,847,686	-19%
16/06	85,486,055	55,094,486	-36%	135,444,365	96,674,881	-29%	49,958,310	41,580,395	-17%
01/07	112,189,980	73,838,517	-34%	177,695,752	128,377,825	-28%	65,505,772	54,539,308	-17%
16/07	138,324,825	100,037,254	-28%	218,279,009	170,572,914	-22%	79,954,184	70,535,660	-12%
01/08	165,525,368	128,355,725	-22%	260,045,132	216,850,039	-17%	94,519,764	88,494,314	-6%
16/08	189,559,044	155,949,298	-18%	298,789,785	261,096,423	-13%	109,230,741	105,147,125	-4%
01/09	214,665,309	185,033,425	-14%	339,505,503	307,615,408	-9%	124,840,194	122,581,983	-2%
16/09	237,903,355	211,142,346	-11%	376,713,354	349,583,250	-7%	138,809,999	138,440,904	0%
01/10	260,911,204	229,995,069	-12%	413,586,476	381,351,364	-8%	152,675,272	151,356,295	-1%
16/10	274,880,543	254,509,209	-7%	437,024,431	419,347,426	-4%	162,143,888	164,838,217	2%
01/11	288,665,706	277,010,496	-4%	460,154,964	455,494,097	-1%	171,489,258	178,483,601	4%
16/11	299,227,781	294,955,779	-1%	478,748,045	481,986,144	1%	179,520,264	187,030,365	4%
01/12	303,480,093	314,572,839	4%	487,972,714	510,593,620	5%	184,492,621	196,020,781	6%
16/12	304,141,517	327,137,555	8%	490,712,566	528,155,576	8%	186,571,049	201,018,021	8%
01/01	304,182,530	329,070,599	8%	491,632,455	531,311,133	8%	187,449,925	202,240,534	8%
16/01	304,182,530	329,432,882	8%	492,093,742	531,853,466	8%	187,911,212	202,420,584	8%
01/02	304,182,530	329,652,510	8%	492,570,379	532,260,252	8%	188,387,849	202,607,742	8%
16/02	304,190,975	329,674,913	8%	492,819,542	532,415,545	8%	188,628,567	202,740,632	7%
01/03	304,206,473	329,775,007	8%	493,021,705	532,551,581	8%	188,815,232	202,776,574	7%
16/03	304,212,220	329,830,906	8%	493,111,109	532,607,480	8%	188,898,889	202,776,574	7%
01/04	304,229,861	329,922,736	8%	493,159,243	532,758,260	8%	188,929,382	202,835,524	7%

Source: UNICA.

**Table 6.** Bi-weekly sugar production, ACCUMULATED - results for the South-Central region

Bi-weekly period	SUGAR (tons)								
	São Paulo State			South-Central region			Others states		
	2011/2012	2012/2013	Var. (%)	2011/20112	2012/2013	Var. (%)	2011/2012	2012/2013	Var. (%)
16/02	0	0		0	2,083		0	2,083	
01/03	0	0		0	4,692		0	4,692	
16/03	295	0		2,958	6,053	105%	2,663	6,053	127%
01/04	23,072	3,691	-84%	56,496	9,744	-83%	33,424	6,053	-82%
16/04	95,775	71,742	-25%	214,065	152,083	-29%	118,290	80,341	-32%
01/05	490,217	290,985	-41%	817,574	545,249	-33%	327,357	254,264	-22%
16/05	1,564,223	874,723	-44%	2,373,839	1,569,285	-34%	809,616	694,562	-14%
01/06	3,225,032	2,243,638	-30%	4,784,139	3,528,807	-26%	1,559,107	1,285,169	-18%
16/06	4,608,640	3,086,027	-33%	6,804,384	4,895,032	-28%	2,195,744	1,809,005	-18%
01/07	6,386,132	4,261,147	-33%	9,402,197	6,690,215	-29%	3,016,065	2,429,068	-19%
16/07	8,219,976	6,064,817	-26%	11,987,619	9,324,855	-22%	3,767,643	3,260,038	-13%
01/08	10,239,469	8,061,881	-21%	14,813,562	12,296,199	-17%	4,574,093	4,234,318	-7%
16/08	12,065,742	10,145,553	-16%	17,472,916	15,324,290	-12%	5,407,174	5,178,737	-4%
01/09	14,080,467	12,439,142	-12%	20,442,724	18,662,605	-9%	6,362,257	6,223,463	-2%
16/09	15,957,303	14,581,925	-9%	23,205,661	21,798,577	-6%	7,248,358	7,216,652	0%
01/10	17,882,100	16,023,279	-10%	26,050,546	24,005,312	-8%	8,168,446	7,982,033	-2%
16/10	19,062,762	17,976,137	-6%	27,831,794	26,795,758	-4%	8,769,032	8,819,621	1%
01/11	20,000,161	19,704,966	-1%	29,308,163	29,337,152	0%	9,308,002	9,632,186	3%
16/11	20,777,690	20,988,789	1%	30,580,283	31,079,495	2%	9,802,593	10,090,706	3%
01/12	21,024,117	22,352,327	6%	31,084,301	32,913,596	6%	10,060,184	10,561,269	5%
16/12	21,063,425	23,174,472	10%	31,227,609	33,957,976	9%	10,164,184	10,783,504	6%
01/01	21,067,954	23,263,073	10%	31,262,876	34,067,927	9%	10,194,922	10,804,854	6%
16/01	21,067,954	23,274,206	10%	31,275,120	34,081,825	9%	10,207,166	10,807,619	6%
01/02	21,067,954	23,274,809	10%	31,291,402	34,082,459	9%	10,223,448	10,807,650	6%
16/02	21,067,954	23,274,809	10%	31,297,834	34,082,459	9%	10,229,880	10,807,650	6%
01/03	21,067,954	23,281,165	11%	31,301,840	34,088,815	9%	10,233,886	10,807,650	6%
16/03	21,067,954	23,285,281	11%	31,304,172	34,092,931	9%	10,236,218	10,807,650	6%
01/04	21,067,954	23,289,350	11%	31,304,172	34,097,000	9%	10,236,218	10,807,650	6%

Source: UNICA.

**Table 7.** Bi-weekly ethanol production, ACCUMULATED - results for the South-Central region

Bi-weekly period	TOTAL ETHANOL (m <sup>3</sup> )								
	São Paulo State			South-Central region			Others states		
	2011/2012	2012/2013	Var. (%)	2011/20112	2012/2013	Var. (%)	2011/2012	2012/2013	Var. (%)
16/02					1,049			1,049	
01/03					3,637			3,637	
16/03	1,188			7,112	11,004	55%	5,924	11,004	86%
01/04	26,568	1,140	-96%	70,814	24,364	-66%	44,246	23,224	-48%
16/04	123,189	69,127	-44%	256,493	177,878	-31%	133,304	108,751	-18%
01/05	507,988	244,100	-52%	905,735	546,704	-40%	397,747	302,604	-24%
16/05	1,288,632	617,662	-52%	2,172,978	1,319,501	-39%	884,346	701,839	-21%
01/06	2,319,531	1,374,393	-41%	3,910,089	2,613,382	-33%	1,590,558	1,238,989	-22%
16/06	3,144,923	1,850,872	-41%	5,360,948	3,611,668	-33%	2,216,025	1,760,796	-21%
01/07	4,132,242	2,478,146	-40%	7,077,891	4,818,154	-32%	2,945,649	2,340,008	-21%
16/07	5,086,608	3,364,188	-34%	8,724,164	6,422,623	-26%	3,637,556	3,058,435	-16%
01/08	6,083,669	4,322,296	-29%	10,455,657	8,205,479	-22%	4,371,988	3,883,183	-11%
16/08	6,985,509	5,283,336	-24%	12,078,967	9,956,904	-18%	5,093,458	4,673,568	-8%
01/09	7,956,774	6,345,827	-20%	13,823,044	11,881,670	-14%	5,866,270	5,535,843	-6%
16/09	8,870,944	7,341,978	-17%	15,436,669	13,691,191	-11%	6,565,725	6,349,213	-3%
01/10	9,802,418	8,099,445	-17%	17,062,784	15,127,475	-11%	7,260,366	7,028,030	-3%
16/10	10,417,849	9,037,861	-13%	18,166,789	16,743,224	-8%	7,748,940	7,705,363	-1%
01/11	10,962,684	9,865,915	-10%	19,134,304	18,226,090	-5%	8,171,620	8,360,175	2%
16/11	11,371,174	10,516,346	-8%	19,883,276	19,282,402	-3%	8,512,102	8,766,056	3%
01/12	11,551,124	11,211,829	-3%	20,271,082	20,386,059	1%	8,719,958	9,174,230	5%
16/12	11,583,512	11,700,014	1%	20,404,943	21,123,909	4%	8,821,431	9,423,895	7%
01/01	11,587,142	11,790,501	2%	20,454,986	21,285,300	4%	8,867,844	9,494,799	7%
16/01	11,588,150	11,807,707	2%	20,479,651	21,310,519	4%	8,891,501	9,502,812	7%
01/02	11,590,426	11,825,779	2%	20,503,672	21,342,110	4%	8,913,246	9,516,331	7%
16/02	11,591,897	11,825,274	2%	20,516,987	21,349,869	4%	8,925,090	9,524,595	7%
01/03	11,593,399	11,825,975	2%	20,528,816	21,352,882	4%	8,935,417	9,526,907	7%
16/03	11,595,528	11,827,403	2%	20,536,728	21,355,055	4%	8,941,200	9,527,652	7%
01/04	11,597,637	11,830,466	2%	20,542,304	21,361,874	4%	8,944,667	9,531,408	7%

Source: UNICA.



**Table 8.** Bi-weekly anhydrous ethanol production, ACCUMULATED - results for the South-Central region

Bi-weekly period	ANHYDROUS ETHANOL (m <sup>3</sup> )								
	São Paulo State			South-Central region			Others states		
	2011/2012	2012/2013	Var. (%)	2011/2012	2012/2013	Var. (%)	2011/2012	2012/2013	Var. (%)
16/02	0	0	0%	0	0	0%	0	0	0%
01/03	0	0	0%	0	0	0%	0	0	0%
16/03	0	0	0%	0	0	0%	0	0	0%
01/04	233	0	-100%	3,901	0	-100%	3,668	0	-100%
16/04	33,627	-38,523	-215%	60,139	-42,738	-171%	26,512	-4,215	-116%
01/05	211,120	-56,891	-127%	336,107	-48,318	-114%	124,987	8,573	-93%
16/05	547,545	37,727	-93%	843,136	124,602	-85%	295,591	86,875	-71%
01/06	973,237	336,240	-65%	1,472,779	560,371	-62%	499,542	224,131	-55%
16/06	1,285,114	553,432	-57%	1,945,225	965,520	-50%	660,111	412,088	-38%
01/07	1,692,642	828,077	-51%	2,548,672	1,456,072	-43%	856,030	627,995	-27%
16/07	2,104,663	1,253,822	-40%	3,163,990	2,131,274	-33%	1,059,327	877,452	-17%
01/08	2,558,415	1,737,433	-32%	3,849,025	2,908,935	-24%	1,290,610	1,171,502	-9%
16/08	2,961,059	2,228,263	-25%	4,497,189	3,687,942	-18%	1,536,130	1,459,679	-5%
01/09	3,423,351	2,775,266	-19%	5,233,357	4,546,325	-13%	1,810,006	1,771,059	-2%
16/09	3,861,669	3,295,324	-15%	5,899,236	5,357,256	-9%	2,037,567	2,061,932	1%
01/10	4,283,534	3,701,928	-14%	6,562,953	5,991,157	-9%	2,279,419	2,289,229	0%
16/10	4,570,585	4,207,235	-8%	7,024,963	6,744,304	-4%	2,454,378	2,537,069	3%
01/11	4,809,441	4,662,373	-3%	7,417,651	7,427,377	0%	2,608,210	2,765,004	6%
16/11	4,956,446	5,017,516	1%	7,704,910	7,946,349	3%	2,748,464	2,928,833	7%
01/12	4,998,009	5,366,915	7%	7,801,802	8,436,320	8%	2,803,793	3,069,405	9%
16/12	4,996,369	5,616,428	12%	7,819,640	8,786,620	12%	2,823,271	3,170,192	12%
01/01	4,985,960	5,653,326	13%	7,818,793	8,844,927	13%	2,832,833	3,191,601	13%
16/01	4,963,789	5,661,135	14%	7,795,769	8,852,220	14%	2,831,980	3,191,085	13%
01/02	4,902,265	5,665,542	16%	7,728,543	8,856,147	15%	2,826,278	3,190,605	13%
16/02	4,870,311	5,648,769	16%	7,683,738	8,838,207	15%	2,813,427	3,189,438	13%
01/03	4,856,638	5,633,602	16%	7,637,904	8,811,300	15%	2,781,266	3,177,698	14%
16/03	4,817,814	5,624,083	17%	7,560,423	8,778,636	16%	2,742,609	3,154,553	15%
01/04	4,742,656	5,600,398	18%	7,453,669	8,729,854	17%	2,711,013	3,129,456	15%

Source: UNICA. Note: anhydrous ethanol production incorporates reprocessing, that is, the final amount refers to the direct production of anhydrous ethanol plus the converted volume of hydrous into anhydrous ethanol.

**Table 9.** Bi-weekly hydrous ethanol production, ACCUMULATED - results for the South-Central region

Bi-weekly period	HYDROUS ETHANOL (m <sup>3</sup> )								
	São Paulo State			South-Central region			Others states		
	2011/2012	2012/2013	Var. (%)	2011/20112	2012/2013	Var. (%)	2011/2012	2012/2013	Var. (%)
16/02	0	0		0	1,049	0%	0	1,049	0%
01/03	0	0		0	3,637	0%	0	3,637	0%
16/03	1,188	0	-100%	7,112	11,004	55%	5,924	11,004	86%
01/04	26,335	1,140	-96%	66,913	24,364	-64%	40,578	23,224	-43%
16/04	89,562	107,650	20%	196,354	220,616	12%	106,792	112,966	6%
01/05	296,868	300,991	1%	569,628	595,022	4%	272,760	294,031	8%
16/05	741,087	579,935	-22%	1,329,842	1,194,899	-10%	588,755	614,964	4%
01/06	1,346,294	1,038,153	-23%	2,437,310	2,053,011	-16%	1,091,016	1,014,858	-7%
16/06	1,859,809	1,297,440	-30%	3,415,723	2,646,148	-23%	1,555,914	1,348,708	-13%
01/07	2,439,600	1,650,069	-32%	4,529,219	3,362,082	-26%	2,089,619	1,712,013	-18%
16/07	2,981,945	2,110,366	-29%	5,560,174	4,291,349	-23%	2,578,229	2,180,983	-15%
01/08	3,525,254	2,584,863	-27%	6,606,632	5,296,544	-20%	3,081,378	2,711,681	-12%
16/08	4,024,450	3,055,073	-24%	7,581,778	6,268,962	-17%	3,557,328	3,213,889	-10%
01/09	4,533,423	3,570,561	-21%	8,589,687	7,335,345	-15%	4,056,264	3,764,784	-7%
16/09	5,009,275	4,046,654	-19%	9,537,433	8,333,935	-13%	4,528,158	4,287,281	-5%
01/10	5,518,884	4,397,517	-20%	10,499,831	9,136,318	-13%	4,980,947	4,738,801	-5%
16/10	5,847,264	4,830,626	-17%	11,141,826	9,998,920	-10%	5,294,562	5,168,294	-2%
01/11	6,153,243	5,203,542	-15%	11,716,653	10,798,713	-8%	5,563,410	5,595,171	1%
16/11	6,414,728	5,498,830	-14%	12,178,366	11,336,053	-7%	5,763,638	5,837,223	1%
01/12	6,553,115	5,844,914	-11%	12,469,280	11,949,739	-4%	5,916,165	6,104,825	3%
16/12	6,587,143	6,083,586	-8%	12,585,303	12,337,289	-2%	5,998,160	6,253,703	4%
01/01	6,601,182	6,137,175	-7%	12,636,193	12,440,373	-2%	6,035,011	6,303,198	4%
16/01	6,624,361	6,146,572	-7%	12,683,882	12,458,299	-2%	6,059,521	6,311,727	4%
01/02	6,688,161	6,160,237	-8%	12,775,129	12,485,963	-2%	6,086,968	6,325,726	4%
16/02	6,721,586	6,176,505	-8%	12,833,249	12,511,662	-3%	6,111,663	6,335,157	4%
01/03	6,736,761	6,192,373	-8%	12,890,912	12,541,582	-3%	6,154,151	6,349,209	3%
16/03	6,777,714	6,203,320	-8%	12,976,305	12,576,419	-3%	6,198,591	6,373,099	3%
01/04	6,854,981	6,230,068	-9%	13,088,635	12,632,020	-3%	6,233,654	6,401,952	3%

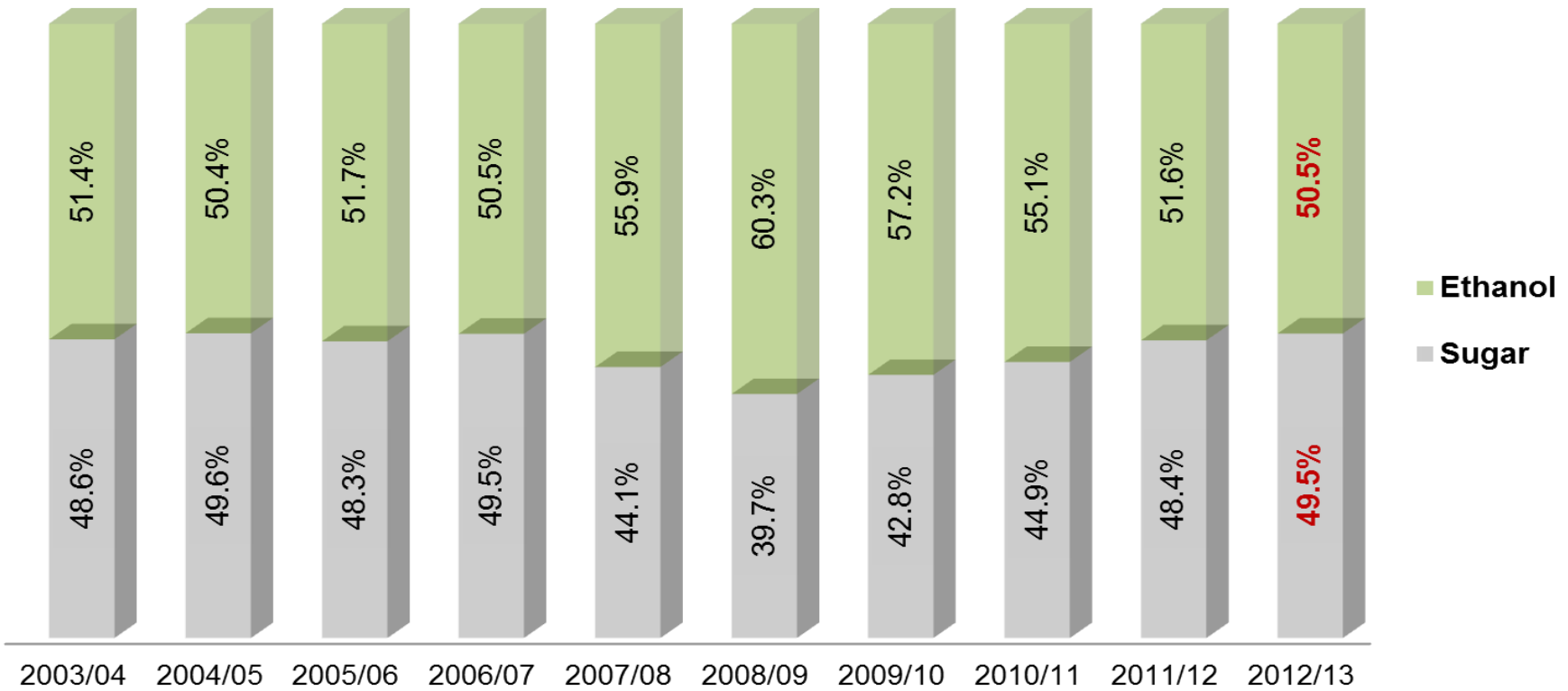
Source: UNICA. Note: hydrous ethanol production incorporates reprocessing, that is, the final amount refers to the direct production of hydrous ethanol plus the converted volume of anhydrous into hydrous ethanol.

**Table 10.** Bi-weekly ethanol mix (%) South-Central region

Bi-weekly period	ETHANOL MIX (%)					
	São Paulo state		South-Central region		Others states	
	2011/12	2012/13	2011/12	2012/13	2011/12	2012/13
01/04	64.03	33.03	65.58	85.25	66.64	
16/04	68.30	60.88	65.60	62.98	62.89	64.72
01/05	61.38	55.92	63.64	59.95	67.24	64.10
16/05	54.18	50.82	56.95	54.89	62.06	59.36
01/06	50.23	47.31	53.90	51.69	60.38	59.49
16/06	49.20	47.95	53.77	54.29	61.34	61.77
01/07	47.45	46.49	51.73	52.21	58.97	60.26
16/07	45.85	44.47	50.82	49.76	59.82	58.36
01/08	44.57	43.92	49.89	49.41	59.59	57.86
16/08	44.57	42.96	49.80	48.50	58.40	57.59
01/09	44.01	43.07	48.85	48.42	56.75	57.24
16/09	44.26	43.16	48.70	48.44	56.11	57.05
01/10	44.08	46.21	48.16	51.44	55.04	58.97
16/10	45.93	43.99	50.20	48.55	56.89	56.75
01/11	48.61	43.92	51.58	48.73	55.99	56.64
16/11	46.01	45.31	48.88	49.72	52.81	58.99
01/12	54.09	45.43	55.40	49.49	56.59	58.44
16/12	56.77	49.22	60.01	53.52	61.11	64.61

Source: UNICA.

Use of sugarcane in South-Central region. Values in %.

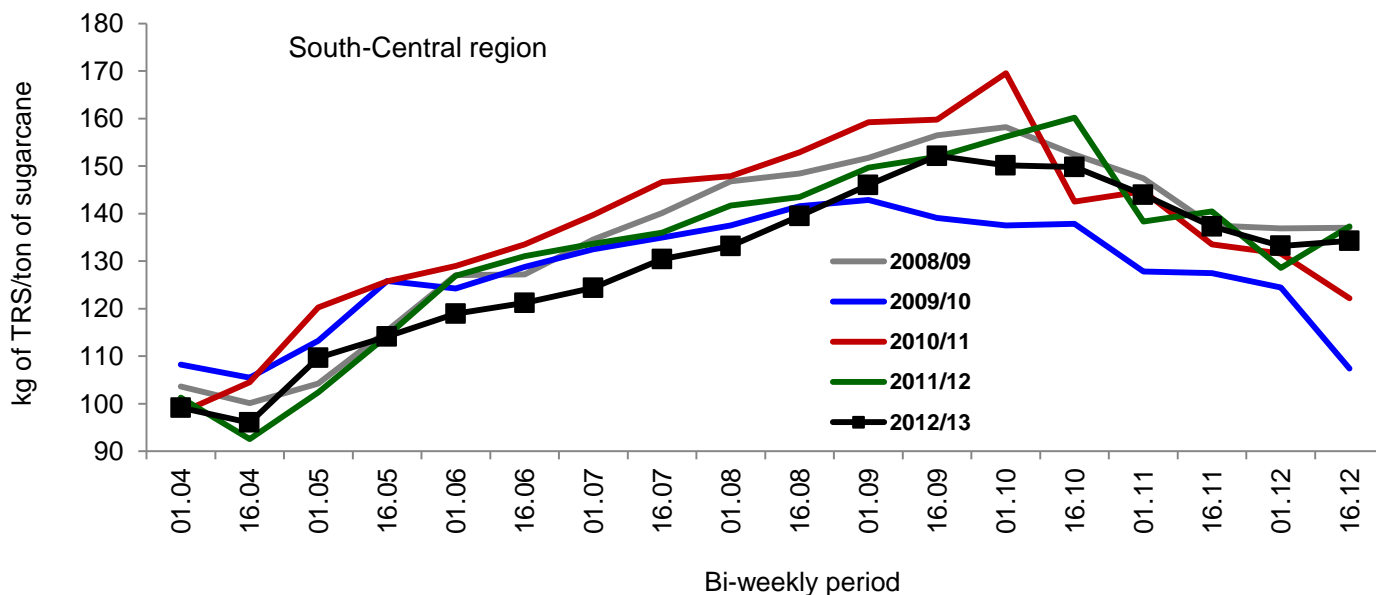


Source: UNICA.

**Table 11.** Bi-weekly sugarcane quality index (kg of TRS per ton of sugarcane) for South-Central region

Bi-weekly period	kg of TRS/ ton of sugarcane					
	São Paulo state		South-Central region		Others states	
	2011/12	2012/13	2011/12	2012/13	2011/12	2012/13
01/04	98.89	55.45	101.27	99.14	102.97	127.52
16/04	88.44	90.09	92.54	96.02	97.06	101.54
01/05	99.78	112.93	102.37	109.66	106.81	106.50
16/05	113.52	109.99	114.25	114.11	115.60	118.98
01/06	126.10	119.22	126.92	118.97	128.38	118.51
16/06	130.69	120.09	131.07	121.22	131.70	122.57
01/07	132.94	122.96	133.68	124.34	134.95	126.35
16/07	136.00	130.13	135.96	130.43	135.89	130.94
01/08	140.58	131.97	141.70	133.19	143.78	135.11
16/08	143.87	138.93	143.48	139.46	142.85	140.34
01/09	150.41	145.37	149.67	146.01	148.48	147.09
16/09	152.08	151.54	151.93	152.10	151.68	153.03
01/10	157.00	149.16	156.20	150.14	154.89	151.57
16/10	164.05	149.27	160.15	149.80	154.41	150.75
01/11	138.88	143.80	138.34	143.93	137.54	144.15
16/11	143.10	137.28	140.45	137.29	136.97	137.30
01/12	132.46	133.67	128.57	133.20	125.25	132.17
16/12	144.26	135.25	137.26	134.29	135.03	131.89

Source: UNICA.



**Table 12.** Historical series of sugarcane quality (kg of TRS per ton of sugarcane) and the number of new mills and closed mills, per harvest season, in South-Central region.

Harvest season	Average TRS (kg TRS/ ton of sugarcane)	Number of new mills	Number of closed mills
2007/2008	143.63	25	2
2008/2009	140.11	30	2
2009/2010	129.56	21	3
2010/2011	140.50	9	5
2011/2012	137.54	3	15
2012/2013	135.57	2	12
2013/2014 <sup>e</sup>	136.70	3	12

Source: UNICA. Note: "e" - estimate.

**Table 13.** Ethanol sales by mills in South-Central region, per ethanol type and destination (m<sup>3</sup>).

Product	Month	Total		External market		Domestic market	
		2011/12	2012/13	2011/12	2012/13	2011/12	2012/13
Total ethanol	Apr	1,126,450	1,394,637	16,499	73,115	1,109,951	1,321,522
	May	1,830,070	1,657,570	108,214	151,794	1,721,856	1,505,776
	Jun	2,172,395	1,675,876	228,404	233,801	1,943,991	1,442,075
	Jul	2,082,153	1,934,168	299,610	425,803	1,782,543	1,508,365
	Aug	2,047,911	2,092,683	207,357	480,847	1,840,554	1,611,836
	Sep	1,857,473	1,968,510	190,879	478,484	1,666,594	1,490,026
	Oct	1,785,258	2,158,458	240,870	426,734	1,544,388	1,731,724
	Nov	1,755,822	2,122,669	238,180	439,244	1,517,642	1,683,425
	Dec	1,522,438	1,901,841	111,384	300,763	1,411,054	1,601,078
	Jan	1,283,428	2,049,667	42,445	229,561	1,240,983	1,820,106
	Feb	1,329,619	1,618,019	52,172	115,358	1,277,447	1,502,661
	Mar	1,643,222	1,609,354	113,756	102,169	1,529,466	1,507,185
	<b>Total</b>		<b>20,436,239</b>	<b>22,183,452</b>	<b>1,849,770</b>	<b>3,457,673</b>	<b>18,586,469</b>
Anhydrous ethanol	Apr	600,360	528,692	793	54,601	599,567	474,091
	May	689,833	645,743	37,655	119,235	652,178	526,508
	Jun	675,265	753,708	39,000	190,586	636,265	563,122
	Jul	722,977	868,957	82,638	285,213	640,339	583,744
	Aug	708,027	896,575	55,814	318,270	652,213	578,305
	Sep	716,532	861,088	70,438	330,093	646,094	530,995
	Oct	642,564	869,128	85,318	248,928	557,246	620,200
	Nov	733,358	858,615	159,896	257,413	573,462	601,202
	Dec	658,122	765,054	86,870	181,516	571,252	583,538
	Jan	509,421	764,780	28,766	94,064	480,655	670,716
	Feb	511,266	643,620	51,952	102,222	459,314	541,398
	Mar	675,178	711,653	96,187	87,153	578,991	624,500
	<b>Total</b>		<b>7,842,903</b>	<b>9,167,613</b>	<b>795,327</b>	<b>2,269,294</b>	<b>7,047,576</b>
Hydrous ethanol	Apr	526,090	865,945	15,706	18,514	510,384	847,431
	May	1,140,237	1,011,827	70,559	32,559	1,069,678	979,268
	Jun	1,497,130	922,168	189,404	43,215	1,307,726	878,953
	Jul	1,359,176	1,065,211	216,972	140,590	1,142,204	924,621
	Aug	1,339,884	1,196,108	151,543	162,577	1,188,341	1,033,531
	Sep	1,140,941	1,107,422	120,441	148,391	1,020,500	959,031
	Oct	1,142,694	1,289,330	155,552	177,806	987,142	1,111,524
	Nov	1,022,464	1,264,054	78,284	181,831	944,180	1,082,223
	Dec	864,316	1,136,787	24,514	119,247	839,802	1,017,540
	Jan	774,007	1,284,887	13,679	135,497	760,328	1,149,390
	Feb	818,353	974,399	220	13,136	818,133	961,263
	Mar	968,044	897,701	17,569	15,016	950,475	882,685
	<b>Total</b>		<b>12,593,336</b>	<b>13,015,839</b>	<b>1,054,443</b>	<b>1,188,379</b>	<b>11,538,893</b>

Source: UNICA. Note: data includes ethanol for fuel, industrial purposes, beverage production and the volume destined to own consumption by mills. It also includes the imports by producers and non-producers.

**Table 14.** Monthly sales by mills in South-Central region - ethanol for other uses (m<sup>3</sup>)

Product	Month	Total			Anhydrous ethanol			Hydrous ethanol		
		2011/12	2012/13	Var. (%)	2011/12	2012/13	Var. (%)	2011/12	2012/13	Var. (%)
Ethanol for other uses	Apr	49,295	57,748	↑ 17.15%	10,566	15,926	↑ 50.73%	38,729	41,822	↑ 7.99%
	May	66,192	86,795	↑ 31.13%	9,744	13,493	↑ 38.47%	56,448	73,302	↑ 29.86%
	Jun	89,591	84,115	↓ -6.11%	11,577	16,629	↑ 43.64%	78,014	67,486	↓ -13.50%
	Jul	83,805	98,273	↑ 17.26%	12,511	15,320	↑ 22.45%	71,294	82,953	↑ 16.35%
	Aug	93,814	107,793	↑ 14.90%	14,820	17,672	↑ 19.24%	78,994	90,121	↑ 14.09%
	Sep	82,662	101,962	↑ 23.35%	14,330	19,469	↑ 35.86%	68,332	82,493	↑ 20.72%
	Oct	90,849	109,474	↑ 20.50%	12,994	25,625	↑ 97.21%	77,855	83,849	↑ 7.70%
	Nov	79,621	104,237	↑ 30.92%	15,354	17,632	↑ 14.84%	64,267	86,605	↑ 34.76%
	Dec	80,361	91,291	↑ 13.60%	13,640	13,967	↑ 2.40%	66,721	77,324	↑ 15.89%
	Jan	72,856	119,920	↑ 64.60%	10,494	37,032	↑ 252.89%	62,362	82,888	↑ 32.91%
	Feb	71,189	85,913	↑ 20.68%	10,068	13,260	↑ 31.70%	61,121	72,653	↑ 18.87%
	Mar	89,026	106,530	↑ 19.66%	15,625	33,007	↑ 111.24%	73,401	73,523	↑ 0.17%
	<b>Total</b>		<b>949,261</b>	<b>1,154,051</b>	<b>↑ 21.57%</b>	<b>151,723</b>	<b>239,032</b>	<b>↑ 57.54%</b>	<b>797,538</b>	<b>915,019</b>

Source: UNICA. Note: ethanol sales destined to the domestic market shown in Table 13, include the volume of ethanol fuel traded, ethanol for other purposes (shown in the table above), losses and own use by mills.



**Table 15.** Sugar exports by South-Central region of Brazil (thousand tons).

Month	Harvest season		Var. (%)
	2011/2012	2012/2013	
April	958	265	↓ -72.33%
May	1,535	1,623	↑ 5.70%
June	2,472	1,617	↓ -34.61%
July	3,030	2,470	↓ -18.47%
August	3,303	2,450	↓ -25.81%
September	2,772	2,634	↓ -4.96%
October	2,122	3,673	↑ 73.13%
November	2,017	2,531	↑ 25.48%
Dezember	1,356	2,132	↑ 57.22%
January	817	1,794	↑ 119.69%
February	913	1,432	↑ 56.96%
March	825	1,690	↑ 104.89%
<b>Total</b>	<b>22,119</b>	<b>24,312</b>	<b>↑ 9.91%</b>

Source: Secex. Elaboration: UNICA.

**Table 16.** Top 10 destinations of sugar exports by South-Central region (thousand tons).

	2011/2012		2012/2013	
1 <sup>st</sup>	China	2,092	China	2,427
2 <sup>nd</sup>	Russia	1,928	United Arab Emirates	1,875
3 <sup>rd</sup>	United Arab Emirates	1,574	Indonesia	1,652
4 <sup>th</sup>	Egypt	1,470	Algeria	1,598
5 <sup>th</sup>	Saudi Arabia	1,265	India	1,315
6 <sup>th</sup>	Algeria	1,245	Egypt	1,300
7 <sup>th</sup>	Bangladesh	1,137	Malaysia	1,238
8 <sup>th</sup>	Nigeria	1,044	Bangladesh	1,195
9 <sup>th</sup>	Malaysia	974	Saudi Arabia	1,163
10 <sup>th</sup>	Iran	902	Nigeria	1,105
	<i>Others (112 countries)</i>	<i>8,488</i>	<i>Others (122 countries)</i>	<i>9,444</i>
	<b>Total</b>	<b>22,119</b>	<b>Total</b>	<b>24,312</b>

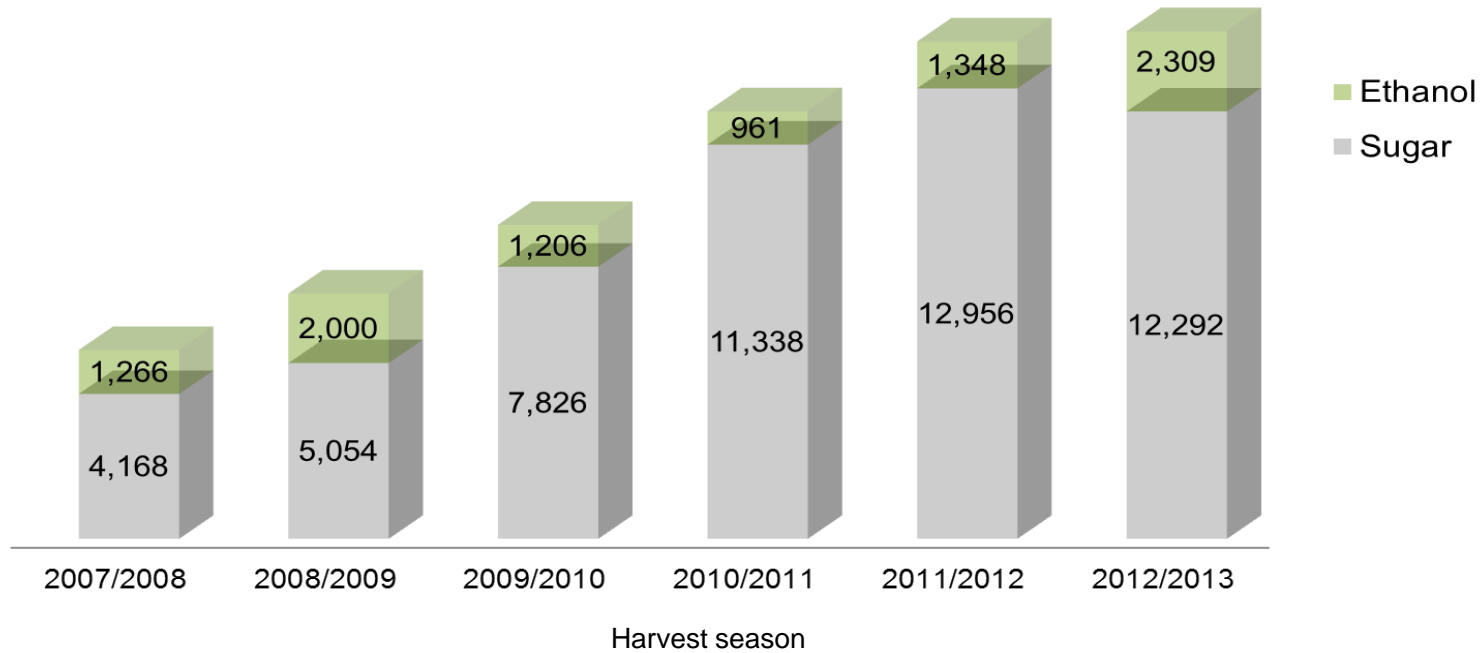
Source: Secex. Elaboration: UNICA.

**Table 17.** Ethanol imports by South-Central region of Brazil (m<sup>3</sup>).

Month	Harvest season		Var. (%)
	2011/2012	2012/2013	
April	104,208	61,676	↓ -40.81%
May	80,639	17,306	↓ -78.54%
June	9,860	2,109	↓ -78.61%
July	318	28	↓ -91.21%
August	32,433	75	↓ -99.77%
September	81	61	↓ -24.61%
October	108,407	55	↓ -99.95%
November	122,158	65	↓ -99.95%
Dezember	246,942	29	↓ -99.99%
January	131,468	56	↓ -99.96%
February	135,769	82	↓ -99.94%
March	28,127	1,129	↓ -95.99%
<b>Total</b>	<b>1,000,411</b>	<b>82,671</b>	<b>↓ -91.74%</b>
Share of ethanol imports from USA	96%	99%	
Imports as a share of ethanol consumption	6.38%	0.53%	

Source: Secex and ANP (for consumption data). Elaboration: UNICA. Note: all data in the above table refers to the South-Central region.

Sugar and ethanol export revenues generated by Brazilian South-Central region (million US\$)



Source: Secex. Elaboration: UNICA.

**Table 18.** Ethanol conversion in South-Central region of Brazil (m<sup>3</sup>).

Month	Conversion of anhydrous ethanol into hydrous ethanol		Conversion of hydrous ethanol into anhydrous ethanol	
	2011/2012	2012/2013	2011/2012	2012/2013
April	1.74	129.6	19.56	6.48
May	0.08	15.6	46.48	27.92
June	2.52	1.2	43.38	42.36
July	0.07	2.5	35.37	62.81
August	0.18	3.5	58.94	68.40
September	0.19	0.6	48.80	64.13
October	0.24	0.3	71.79	81.38
November	1.81	0.3	52.65	89.41
Dezember	17.29	1.2	1.87	46.40
January	98.45	4.9	0.59	6.33
February	95.44	47.5	0.48	4.66
March	184.33	82.4	0.08	3.95
<b>Total</b>	<b>402.3</b>	<b>289.5</b>	<b>380.0</b>	<b>504.2</b>

Source: UNICA.

**Table 19.** Ethanol supply & demand balance in South-Central region of Brazil. Volume in thousand m<sup>3</sup>.

	<b>Anhydrous ethanol</b>	<b>Hydrous ethanol</b>	<b>Total</b>
<b>Stock in April 1, 2012</b>	<b>952</b>	<b>839</b>	<b>1,790</b>
<b>Production during 2012/2013 harvest season - beginning in 04/01/2012*</b>	<b>8,805</b>	<b>12,608</b>	<b>21,412</b>
<b>Sales to domestic market - April 2012 to March of 2013</b>	<b>6,872</b>	<b>11,827</b>	<b>18,700</b>
<i>Sales of fuel ethanol</i>	6,628	10,753	17,381
<i>Sales of ethanol for industrial purposes and to own consumption by mills</i>	245	1,075	1,319
<b>Sales to external market - April to March of 2012</b>	<b>2,269</b>	<b>1,188</b>	<b>3,458</b>
<b>Stock in April 1, 2013</b>	<b>614</b>	<b>431</b>	<b>1,045</b>

Source: UNICA. Note: \*production include the volume of hydrous ethanol converted into anhydrous ethanol (vice versa) and the imports by producers and non-producers.

**Table 20.** Sugar supply & demand balance in South-Central region of Brazil. Values in thousand tons.

	2011/2012	2012/2013	Var. (%)
Initial stock	1,157.46	1,704.49	↑ 47.26%
Production	31,304.17	34,097.00	↑ 8.92%
Exports*	22,119.31	24,312.26	↑ 9.91%
Domestic market**	8,637.83	9,604.19	↑ 11.19%
Final stock	1,704.49	1,885.04	↑ 10.59%

Source: UNICA and Secex. Note: \*export data provided by Secex; \*\*domestic market calculated by the difference between the sum of the initial stock and production, minus sales to external market and the stock registered at the end of the harvest season.

**Table 21.** Average prices of TRS and of the sugarcane delivered by growers in São Paulo state. Nominal values.

Harvest season	Kg of TRS/ ton. of sugarcane	R\$/ton. of sugarcane	R\$/ton. of sugarcane	
			Sugarcane destined to sugar production	Sugarcane destined to ethanol production
2007/2008	143.85	35.14	32.85	37.15
2008/2009	141.80	39.45	39.49	39.43
2009/2010	130.26	45.49	51.87	39.99
2010/2011	141.07	56.74	62.19	51.68
2011/2012	137.71	69.09	74.24	63.36
2012/2013	135.43	64.04	68.08	59.19

Source: Consecana, Orplana and UNICA. Elaboration: UNICA.



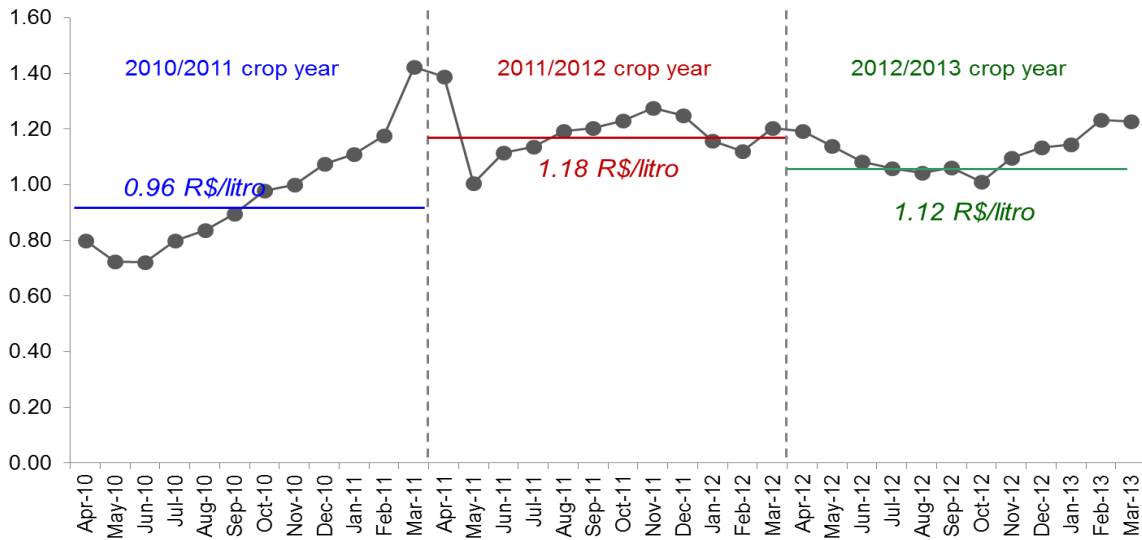
**Table 22.** Average revenue from ethanol and sugar sales in São Paulo state. Nominal values. R\$/ton. of sugarcane

Harvest season	Sugar sales	Ethanol sales	Sales of hydrous ethanol fuel	Average
2007/2008	55.21	59.82	58.14	57.67
2008/2009	66.36	63.49	60.55	64.69
2009/2010	87.17	64.40	63.33	74.95
2010/2011	104.51	83.22	80.33	93.47
2011/2012	124.77	102.03	96.98	114.01
2012/2013	114.41	95.31	90.83	105.73

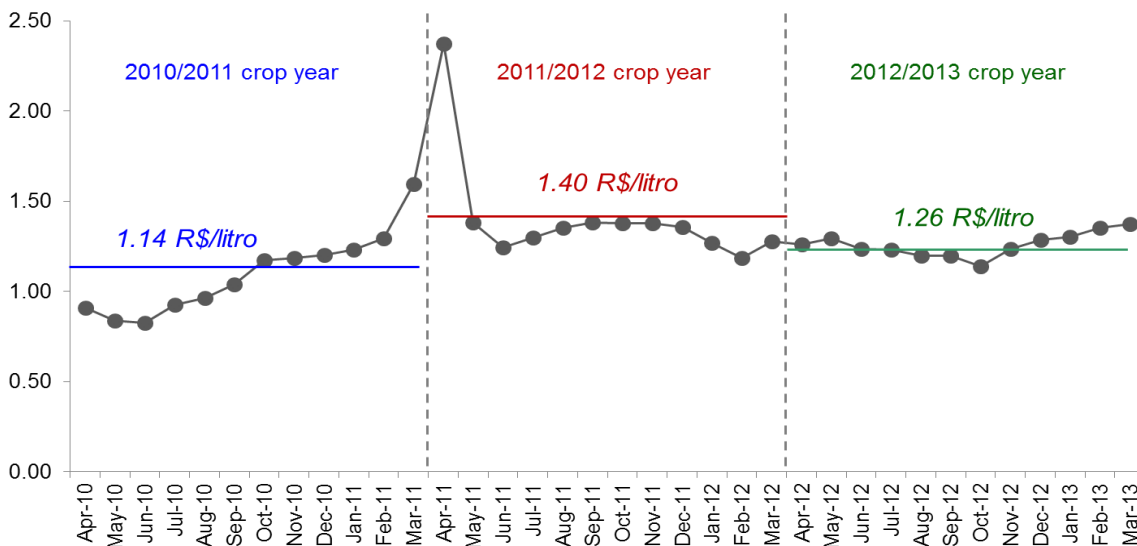
Source: Consecana. Elaboration: UNICA.

## Monthly prices received by producers in São Paulo state - ethanol

Fuel hydrous ethanol (R\$/liter)



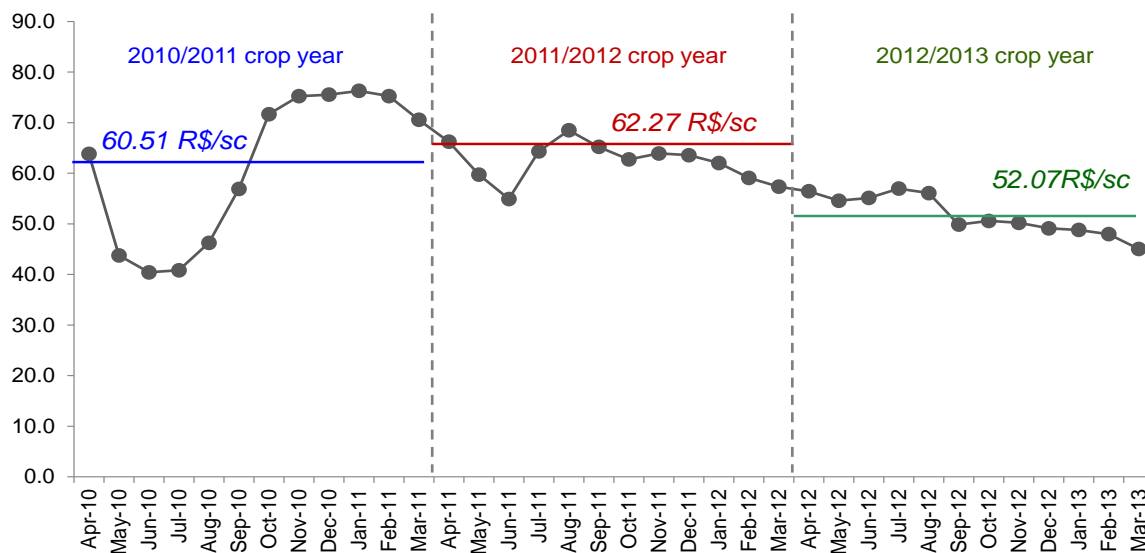
Fuel anhydrous ethanol (R\$/liter)



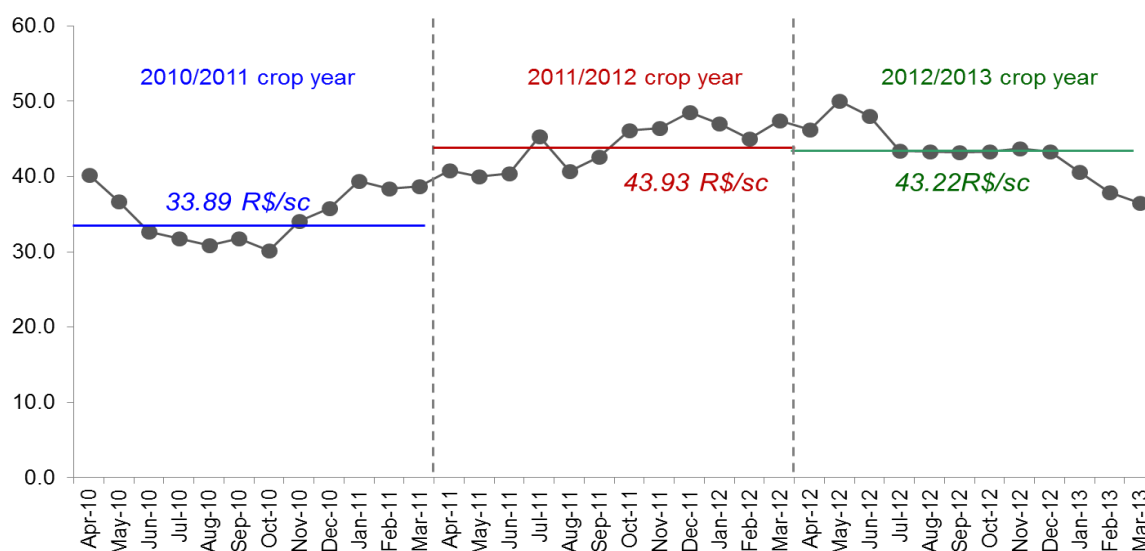
Source: CEPEA. Elaboration: UNICA. Note: prices minus freight charges and taxes; highlighted values refer to the average prices of the harvest season and they are calculated considering the trading curve published by Consecana; nominal values.

## Monthly prices received by producers in São Paulo state - sugar

White sugar - domestic market (R\$/ 50 kg bag) - spot market



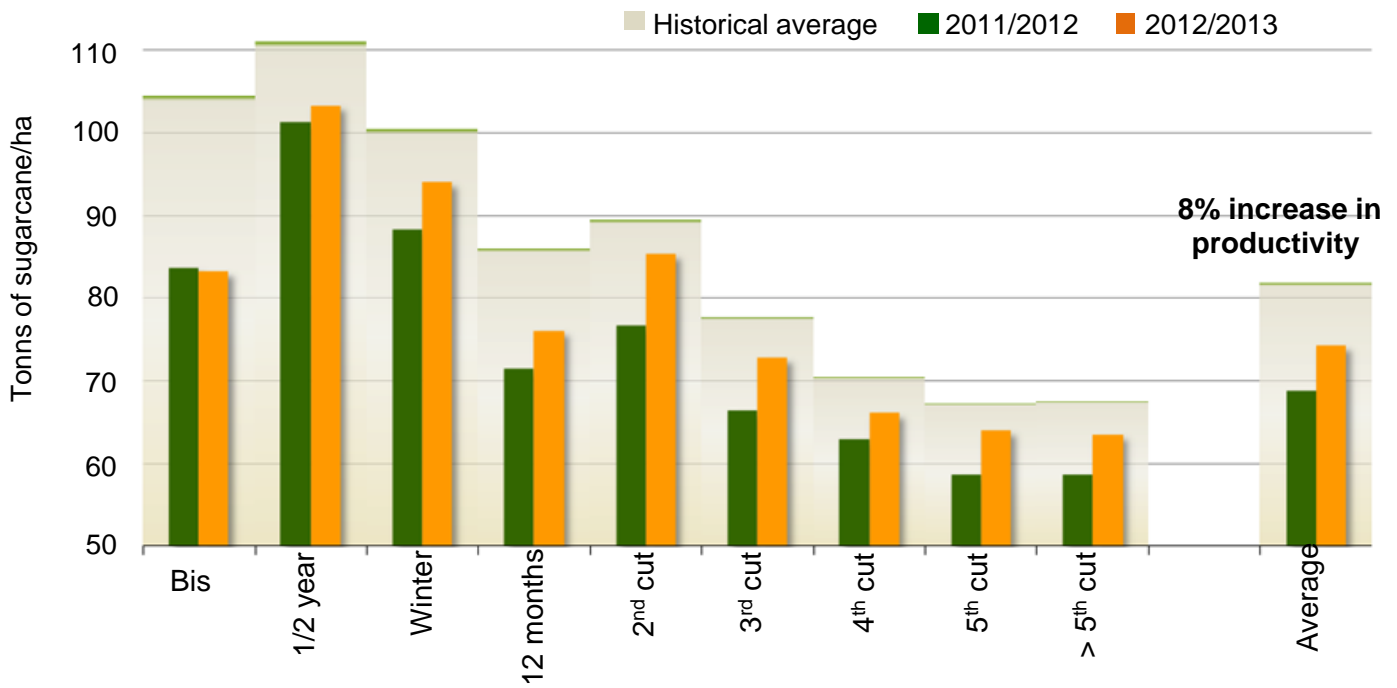
Raw sugar - external market (R\$/ 50 kg bag)



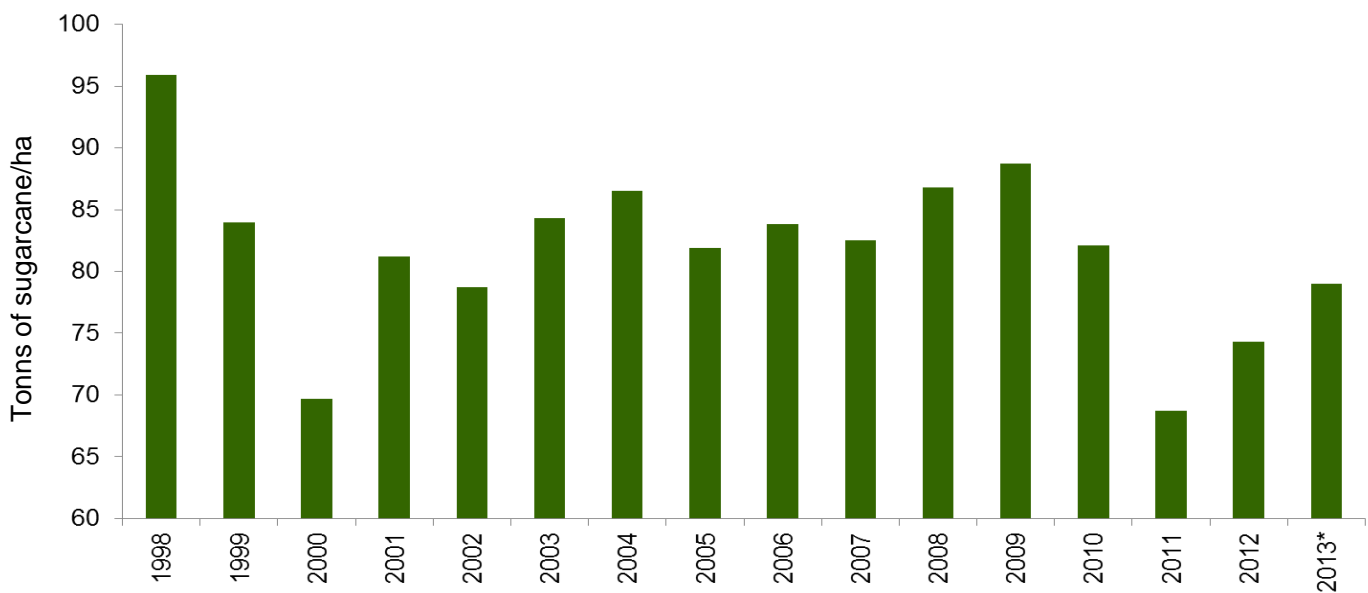
Source: CEPEA. Elaboration: UNICA. Note: prices minus freight charges but include taxes; highlighted values refer to the average prices of the harvest season and they are calculated considering the trading curve published by Consecana; nominal values.

**Agricultural productivity in South-Central region of Brazil. Values in tons of sugarcane per hectare.**

*Agricultural productivity by sugarcane cutting stage - South-Central region of Brazil*



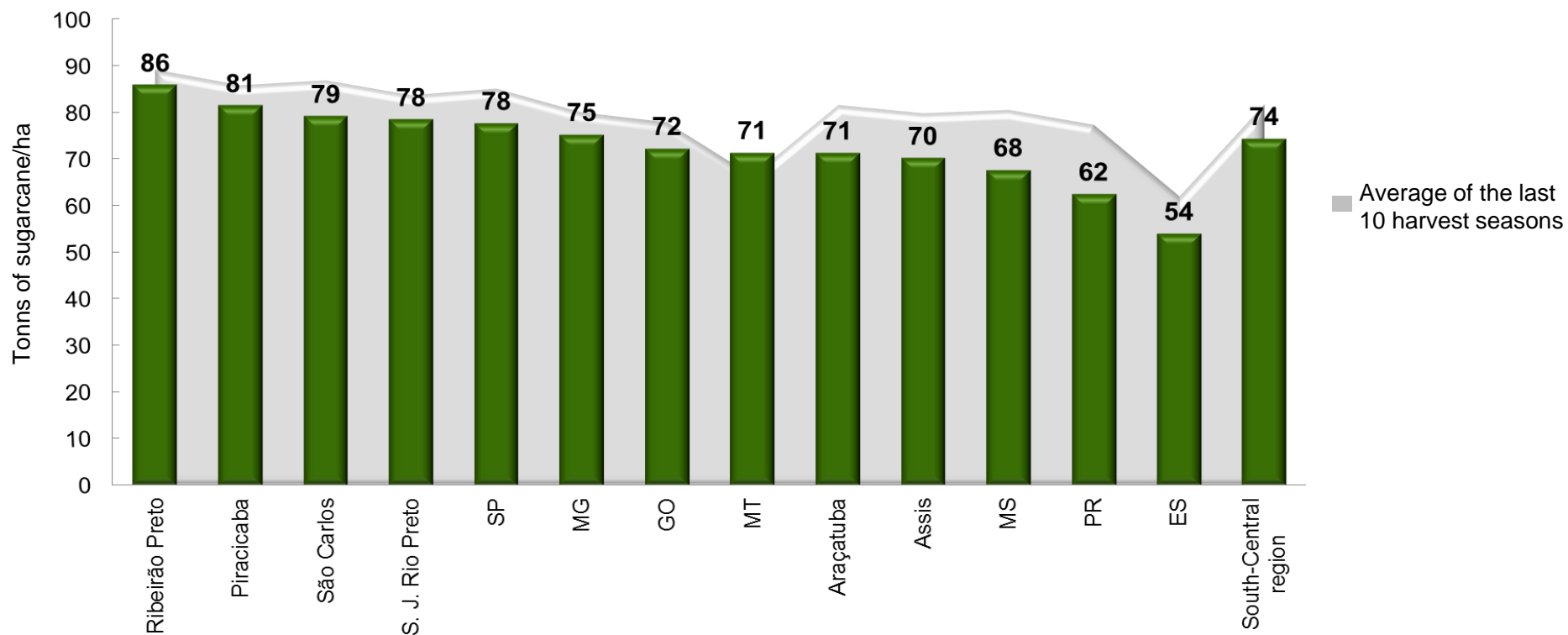
*Historical average agricultural productivity, by calendar year - South-Central region of Brazil*



Source: CTC-MUTUO

**Agricultural productivity in South-Central region of Brazil. Values in tons of sugarcane per hectare.**

*Agricultural productivity per state of Brazilian South-Central region and cities of São Paulo state during 2012/2013 harvest season*



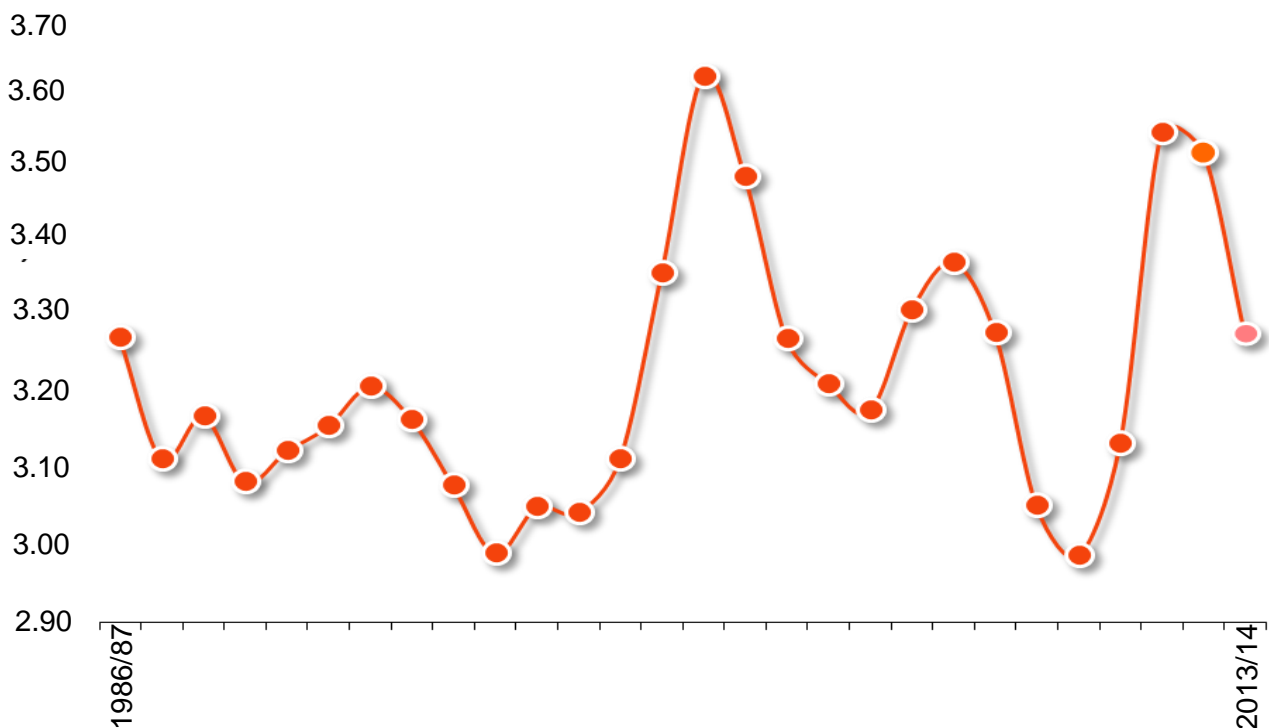
Source: CTC-MUTUO

### Renewal of sugarcane fields in South-Central region of Brazil

Renewal rate of sugarcane fields - South-Central region of Brazil. Values in % of the total cultivated area



Historical age of sugarcane field - South-Central region of Brazil. Values in years.



Source: Censo CTC

*Staff:*

**Antônio de Pádua Rodrigues**  
Technical Director

**Luciano Rodrigues**  
Economic Department Manager

**Celma Ramalho Gaudêncio**  
Business Intelligence Analyst

**Cezar Sallum**  
Planning Assistant

**Cleber dos Santos Valin**  
Planning Assistant

**Maria Andrade Pinheiro**  
Economic Analyst

**Mariana Regina Zechin**  
Economic Analyst

**Valdemir Nunes Machado**  
Systems Analyst

*Data released in this report has been compiled and analyzed by UNICA, with figures provided by mills and by the following associations of producers from South-Central states:*

- *Ethanol and sugar producers association in the state of Paraná (Alcopar);*
- *Bioenergy producers association of Mato Grosso do Sul (Biosul);*
- *Sugar and ethanol industries association in the state of Minas Gerais (SIAMIG);*
- *Association of ethanol industry of Goiás state (SIFAEG);*
- *Sugar and ethanol industry association of Mato Grosso (SINDALCOOL);*
- *Plants and distilleries society of Espírito Santo state (SUDES);*
- *“Fluminense” association of sugar and ethanol producers (SINDAAF).*

*Data regarding weather and agricultural conditions has been provided by the Center for Sugarcane Technology (CTC).*

This report has been prepared for informative purposes only and is available free of charge from [www.unica.com.br/unicadata](http://www.unica.com.br/unicadata).

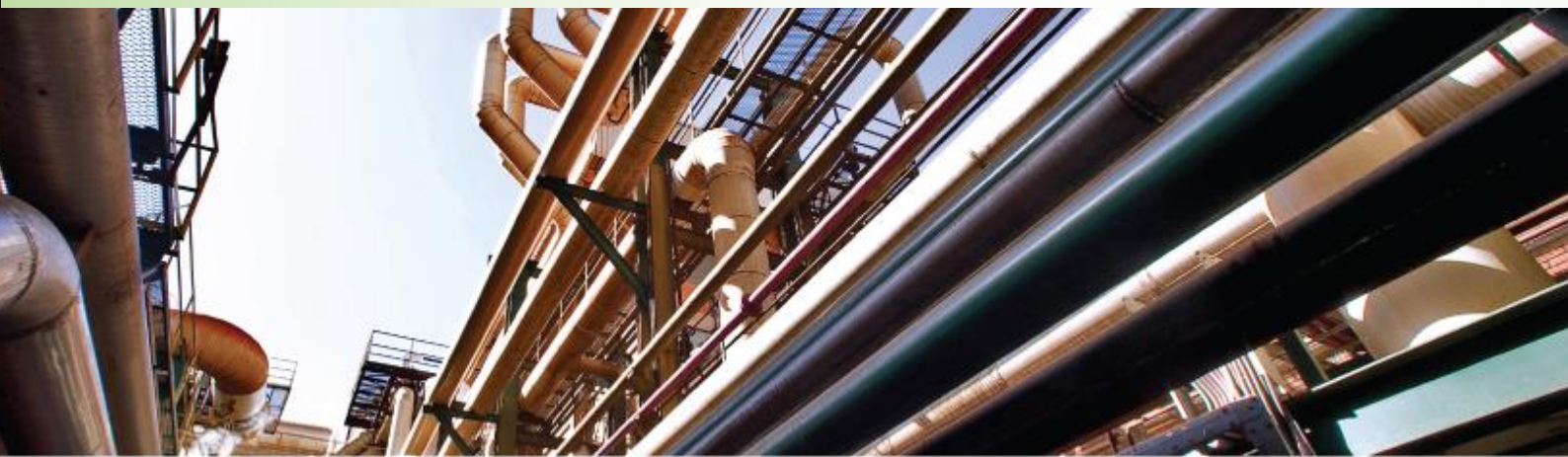
UNICA has endeavored to ensure that all data and information utilized are precise and obtained from credible sources. However, the organization is not responsible for decisions of any nature, financial or otherwise, that might be undertaken based on the contents of this report. Reproduction of this report, in whole or in part, in any form or by any means, is permitted only with The Brazilian Sugarcane Industry Association (UNICA) credited as the source.



BRAZILIAN SUGARCANE INDUSTRY ASSOCIATION

ETHANOL • SUGAR • ENERGY

BRAZIL



**BIOENERGIA**  
ALCOPAR / SIALPAR / SIAPAR



CENTRO DE TECNOLOGIA CANAVIEIRA



**BioSul**  
Associação dos Produtores de Bioenergia  
de Mato Grosso do Sul



**SIAMIG**  
BIOENERGIA - ETANOL - AÇÚCAR  
Associação das Indústrias Sucroenergéticas de Minas Gerais



**SINDALCOOL/MT**  
SINDICATO DAS INDÚSTRIAS SUOROALCOOLEIRAS  
DO ESTADO DE MATO GROSSO

**SINDAAF**



**SIFAEG**  
SINDICATO DA INDÚSTRIA DE FABRICAÇÃO  
DE ETANOL DO ESTADO DE GOIÁS  
GOIÁS ETHANOL INDUSTRY ASSOCIATION



**SIFAÇUCAR**  
SINDICATO DA INDÚSTRIA DE FABRICAÇÃO  
DE AÇÚCAR DO ESTADO DE GOIÁS  
GOIÁS SUGAR INDUSTRY ASSOCIATION

**SUDES**