



Final report of 2011/2012 harvest season

South-Central region

Table 1. 2011/2012 sugarcane harvest in South-Central Brazil - final numbers
Comparison with 2010/2011 crop year

Products	Crop year			
	2010/2011	2011/2012	Var. (%)	
Sugarcane ¹	556,945	493,159	↓ -11.45%	
Sugar ¹	33,501	31,304	↓ -6.56%	
Anhydrous ethanol ²	7,413	7,466	↑ 0.71%	
Hydrous ethanol ²	17,971	13,076	↓ -27.24%	
Total ethanol ²	25,385	20,542	↓ -19.08%	
ATR ¹	78,249	67,830	↓ -13.31%	
ATR/ ton of sugarcane ³	140.50	137.54	↓ -2.10%	
Share (%)	sugar	44.93%	48.44%	↑
	ethanol	55.07%	51.56%	↓
Liters of ethanol/ ton of sugarcane	45.58	41.65	↓ -8.61%	
Kilograms of sugar/ ton of sugarcane	60.15	63.48	↑ 5.53%	

Source: UNICA. Note: ¹ - thousand tons; ² - million liters; ³ - kg of ATR/ ton of sugarcane; "ATR" is the amount of product obtained per ton of crushed sugarcane.

Table 2. Final figures of 2011/2012 harvest season in South-Central region of Brazil
Comparison with 2012/2013 crop year projection

Products	Crop year			
	2011/2012	2012/2013	Var. (%)	
Sugarcane ¹	493,159	509,000	↑ 3.21%	
Sugar ¹	31,304	33,100	↑ 5.74%	
Anhydrous ethanol ²	7,466	6,950	↓ -6.91%	
Hydrous ethanol ²	13,076	14,536	↑ 11.17%	
Total ethanol ²	20,542	21,486	↑ 4.60%	
ATR ¹	67,830	71,260	↑ 5.06%	
ATR/ ton of sugarcane ³	137.54	140.00	↑ 1.79%	
Share (%)	sugar	48.44%	48.75%	↑
	ethanol	51.56%	51.25%	↓
Liters of ethanol/ ton of sugarcane	41.65	42.21	↑ 1.34%	
Kilograms of sugar/ ton of sugarcane	63.48	65.03	↑ 2.45%	
Sugar available for exports ¹	22,119	24,000	↑ 8.50%	
Ethanol exports ²	1,850	1,700	↓ -8.11%	

Source: UNICA. Note: ¹ - thousand tons; ² - million liters; ³ - kg of TRS/ ton of sugarcane; "TRS" is the amount of product obtained per ton of crushed sugarcane.

Table 3. Sugarcane harvest per State of South-Central region

STATE	Sugarcane ¹		Sugar ¹		Total ethanol ²		Anhydrous ethanol ²		Hydrous ethanol ²	
	2010/11	2011/12	2010/11	2011/12	2010/11	2011/12	2010/11	2011/12	2010/11	2011/12
ES	3,524,817	4,180,168	90,083	122,235	186,799	224,106	99,189	143,095	87,610	81,011
GO	46,612,721	45,220,066	1,805,458	1,752,299	2,894,860	2,677,000	662,317	668,057	2,232,543	2,008,943
MT	13,660,681	13,153,709	446,110	398,192	856,971	843,942	281,590	320,807	575,381	523,135
MS	33,519,668	33,859,650	1,328,546	1,587,746	1,848,508	1,631,250	360,446	430,842	1,488,062	1,200,408
MG	54,629,096	49,741,239	3,244,070	3,238,089	2,557,693	2,083,987	619,470	780,523	1,938,223	1,303,464
PR	43,320,725	40,505,746	3,022,089	3,007,991	1,619,339	1,402,054	271,657	367,689	1,347,682	1,034,365
RJ	2,092,723	2,173,750	118,250	129,666	60,625	75,758	0	0	60,625	75,758
RS	81,780	95,054	0	0	5,801	6,570	0	0	5,801	6,570
SP	359,502,680	304,229,861	23,446,119	21,067,954	15,354,279	11,597,637	5,118,753	4,755,181	10,235,526	6,842,456
TOTAL	556,944,891	493,159,243	33,500,725	31,304,172	25,384,875	20,542,304	7,413,422	7,466,194	17,971,453	13,076,110

STATE	Kg TRS/ton of sugarcane		Kg of sugar/ton of sugarcane		Liters of ethanol/ ton of sugar		Sugar mix (%)		Ethanol mix (%)	
	2010/11	2011/12	2010/11	2011/12	2010/11	2011/12	2010/11	2011/12	2010/11	2011/12
ES	117.70	123.05	25.56	29.24	53.00	53.61	22.79%	24.94%	77.21%	75.06%
GO	145.78	140.97	38.73	38.75	62.10	59.20	27.88%	28.85%	72.12%	71.15%
MT	140.93	141.09	32.66	30.27	62.73	64.16	24.32%	22.52%	75.68%	77.48%
MS	134.81	130.89	39.63	46.89	55.15	48.18	30.85%	37.60%	69.15%	62.40%
MG	141.63	139.69	59.38	65.10	46.82	41.90	44.01%	48.91%	55.99%	51.09%
PR	136.33	136.62	69.76	74.26	37.38	34.61	53.71%	57.05%	46.29%	42.95%
RJ	107.86	121.02	56.51	59.65	28.97	34.85	54.98%	51.73%	45.02%	48.27%
RS	118.89	115.85	0.00	0.00	70.93	69.12	0.00%	0.00%	0.00%	0.00%
SP	141.07	137.72	65.22	69.25	42.71	38.12	48.52%	52.77%	51.48%	47.23%
TOTAL	140.50	137.54	60.15	63.48	45.58	41.65	44.93%	48.44%	55.07%	51.56%

Source: UNICA. Note: ¹ - tons; ² - m³.

Table 4. Sugarcane harvest by autonomous distilleries and mixed production mills in South-Central region

Mills	2010/11	2011/12
Mixed production mills		
Sugarcane ¹	33,500,725	423,093,409
Sugar ¹	6,577,236	31,304,172
Anhydrous ethanol ²	12,482,170	6,114,422
Hydrous ethanol ²	19,059,406	8,615,634
Total ethanol ²	140	14,730,056
Distilleries		
Sugarcane ¹	0	70,065,834
Sugar ¹	836,186	0
Anhydrous ethanol ²	5,489,283	1,351,772
Hydrous ethanol ²	6,325,469	4,460,476
Total ethanol ²	143	5,812,248

Source: UNICA. Note: ¹ - tons; ² - m³; autonomous distilleries are plants dedicated exclusively to ethanol production; mixed production mills are dedicated to producing both ethanol and sugar.

Table 5. Bi-weekly sugarcane crushing, ACCUMULATED - results for the South-Central region

Bi-weekly period	SUGARCANE (tons)								
	São Paulo State			South-Central region			Others states		
	2010/2011	2011/2012	Var. (%)	2010/2011	2011/2012	Var. (%)	2010/2011	2011/2012	Var. (%)
16/02	58,754	0	-100%	106,143	0	-100%	47,389	0	-100%
01/03	207,212	0	-100%	325,459	0	-100%	118,247	0	-100%
16/03	1,096,399	35,967	-97%	2,152,580	183,499	-91%	1,056,181	147,532	-86%
01/04	4,327,417	708,006	-84%	6,943,871	1,795,415	-74%	2,616,454	1,087,409	-58%
16/04	18,522,851	3,429,398	-81%	27,739,307	6,989,642	-75%	9,216,456	3,560,244	-61%
01/05	40,191,302	14,172,087	-65%	58,543,283	24,003,829	-59%	18,351,981	9,831,742	-46%
16/05	63,832,226	35,843,615	-44%	93,669,729	57,216,373	-39%	29,837,503	21,372,758	-28%
01/06	91,497,220	63,615,028	-30%	134,176,250	100,451,296	-25%	42,679,030	36,836,268	-14%
16/06	117,080,341	85,486,055	-27%	173,943,044	135,444,365	-22%	56,862,703	49,958,310	-12%
01/07	144,020,634	112,189,980	-22%	215,726,152	177,695,752	-18%	71,705,518	65,505,772	-9%
16/07	168,987,560	138,324,825	-18%	255,193,369	218,279,009	-14%	86,205,809	79,954,184	-7%
01/08	196,617,271	165,525,368	-16%	297,848,320	260,045,132	-13%	101,231,049	94,519,764	-7%
16/08	222,385,775	189,559,044	-15%	338,082,109	298,789,785	-12%	115,696,334	109,230,741	-6%
01/09	248,682,918	214,665,309	-14%	380,149,552	339,505,503	-11%	131,466,634	124,840,194	-5%
16/09	272,359,615	237,903,355	-13%	417,653,816	376,713,354	-10%	145,294,201	138,809,999	-4%
01/10	288,798,880	260,911,204	-10%	444,881,993	413,586,476	-7%	156,083,113	152,675,272	-2%
16/10	305,450,735	274,880,543	-10%	471,109,669	437,024,431	-7%	165,658,934	162,143,888	-2%
01/11	325,366,535	288,665,706	-11%	501,230,986	460,154,964	-8%	175,864,451	171,489,258	-2%
16/11	341,555,269	299,227,781	-12%	525,615,991	478,748,045	-9%	184,060,722	179,520,264	-2%
01/12	353,238,492	303,480,093	-14%	544,123,361	487,972,714	-10%	190,884,869	184,492,621	-3%
16/12	357,786,697	304,141,517	-15%	552,913,874	490,712,566	-11%	195,127,177	186,571,049	-4%
01/01	358,844,676	304,182,530	-15%	555,390,097	491,632,455	-11%	196,545,421	187,449,925	-5%
16/01	359,104,465	304,182,530	-15%	555,956,582	492,093,742	-11%	196,852,117	187,911,212	-5%
01/02	359,139,253	304,182,530	-15%	556,233,516	492,570,379	-11%	197,094,263	188,387,849	-4%
16/02	359,178,984	304,190,975	-15%	556,476,550	492,819,542	-11%	197,297,566	188,628,567	-4%
01/03	359,245,145	304,206,473	-15%	556,674,703	493,021,705	-11%	197,429,558	188,815,232	-4%
16/03	359,319,505	304,212,220	-15%	556,749,528	493,111,109	-11%	197,430,023	188,898,889	-4%
01/04	359,502,680	304,229,861	-15%	556,944,891	493,159,243	-11%	197,442,211	188,929,382	-4%

Source: UNICA.

Table 6. Bi-weekly sugar production, ACCUMULATED - results for the South-Central region

Bi-weekly period	SUGAR (tons)								
	São Paulo State			South-Central region			Others states		
	2010/2011	2011/2012	Var. (%)	2010/2011	2011/2012	Var. (%)	2010/2011	2011/2012	Var. (%)
16/02	230			230					
01/03	4,575			4,575					
16/03	38,631	295	-99%	45,732	2,958	-94%	7,101	2,663	-62%
01/04	159,334	23,072	-86%	212,815	56,496	-73%	53,481	33,424	-38%
16/04	740,393	95,775	-87%	1,028,523	214,065	-79%	288,130	118,290	-59%
01/05	1,905,119	490,217	-74%	2,555,429	817,574	-68%	650,310	327,357	-50%
16/05	3,275,511	1,564,223	-52%	4,422,666	2,373,839	-46%	1,147,155	809,616	-29%
01/06	4,930,554	3,225,032	-35%	6,649,814	4,784,139	-28%	1,719,260	1,559,107	-9%
16/06	6,562,556	4,608,640	-30%	8,954,030	6,804,384	-24%	2,391,474	2,195,744	-8%
01/07	8,357,999	6,386,132	-24%	11,503,991	9,402,197	-18%	3,145,992	3,016,065	-4%
16/07	10,109,833	8,219,976	-19%	14,015,229	11,987,619	-14%	3,905,396	3,767,643	-4%
01/08	12,061,159	10,239,469	-15%	16,788,246	14,813,562	-12%	4,727,087	4,574,093	-3%
16/08	13,978,553	12,065,742	-14%	19,534,143	17,472,916	-11%	5,555,590	5,407,174	-3%
01/09	15,984,943	14,080,467	-12%	22,492,730	20,442,724	-9%	6,507,787	6,362,257	-2%
16/09	17,784,467	15,957,303	-10%	25,141,818	23,205,661	-8%	7,357,351	7,248,358	-1%
01/10	19,110,371	17,882,100	-6%	27,111,794	26,050,546	-4%	8,001,423	8,168,446	2%
16/10	20,114,425	19,062,762	-5%	28,612,774	27,831,794	-3%	8,498,349	8,769,032	3%
01/11	21,467,871	20,000,161	-7%	30,537,112	29,308,163	-4%	9,069,241	9,308,002	3%
16/11	22,499,477	20,777,690	-8%	32,001,382	30,580,283	-4%	9,501,905	9,802,593	3%
01/12	23,194,722	21,024,117	-9%	33,033,223	31,084,301	-6%	9,838,501	10,060,184	2%
16/12	23,395,670	21,063,425	-10%	33,400,449	31,227,609	-7%	10,004,779	10,164,184	2%
01/01	23,422,891	21,067,954	-10%	33,470,323	31,262,876	-7%	10,047,432	10,194,922	1%
16/01	23,427,197	21,067,954	-10%	33,478,769	31,275,120	-7%	10,051,572	10,207,166	2%
01/02	23,427,362	21,067,954	-10%	33,481,120	31,291,402	-7%	10,053,758	10,223,448	2%
16/02	23,430,837	21,067,954	-10%	33,484,994	31,297,834	-7%	10,054,157	10,229,880	2%
01/03	23,433,649	21,067,954	-10%	33,488,151	31,301,840	-7%	10,054,502	10,233,886	2%
16/03	23,437,165	21,067,954	-10%	33,491,771	31,304,172	-7%	10,054,606	10,236,218	2%
01/04	23,446,119	21,067,954	-10%	33,500,725	31,304,172	-7%	10,054,606	10,236,218	2%

Source: UNICA.

Table 7. Bi-weekly ethanol production, ACCUMULATED - results for the South-Central region

Bi-weekly period	TOTAL ETHANOL (m ³)								
	São Paulo State			South-Central region			Others states		
	2010/2011	2011/2012	Var. (%)	2010/2011	2011/2012	Var. (%)	2010/2011	2011/2012	Var. (%)
16/02	2,829			5,628			2,799		
01/03	10,206			18,207			8,001		
16/03	41,532	1,188	-97%	102,658	7,112	-93%	61,126	5,924	-90%
01/04	154,771	26,568	-83%	277,371	70,814	-74%	122,600	44,246	-64%
16/04	674,205	123,189	-82%	1,059,735	256,493	-76%	385,530	133,304	-65%
01/05	1,500,989	507,988	-66%	2,300,924	905,735	-61%	799,935	397,747	-50%
16/05	2,417,091	1,288,632	-47%	3,749,929	2,172,978	-42%	1,332,838	884,346	-34%
01/06	3,498,350	2,319,531	-34%	5,451,035	3,910,089	-28%	1,952,685	1,590,558	-19%
16/06	4,513,202	3,144,923	-30%	7,154,977	5,360,948	-25%	2,641,775	2,216,025	-16%
01/07	5,623,324	4,132,242	-27%	9,019,318	7,077,891	-22%	3,395,994	2,945,649	-13%
16/07	6,725,502	5,086,608	-24%	10,878,530	8,724,164	-20%	4,153,028	3,637,556	-12%
01/08	7,938,964	6,083,669	-23%	12,882,472	10,455,657	-19%	4,943,508	4,371,988	-12%
16/08	9,087,675	6,985,509	-23%	14,809,487	12,078,967	-18%	5,721,812	5,093,458	-11%
01/09	10,326,403	7,956,774	-23%	16,925,956	13,823,044	-18%	6,599,553	5,866,270	-11%
16/09	11,459,089	8,870,944	-23%	18,816,915	15,436,669	-18%	7,357,826	6,565,725	-11%
01/10	12,311,251	9,802,418	-20%	20,316,236	17,062,784	-16%	8,004,985	7,260,366	-9%
16/10	13,061,905	10,417,849	-20%	21,585,965	18,166,789	-16%	8,524,060	7,748,940	-9%
01/11	13,921,961	10,962,684	-21%	22,959,530	19,134,304	-17%	9,037,569	8,171,620	-10%
16/11	14,561,701	11,371,174	-22%	23,967,478	19,883,276	-17%	9,405,777	8,512,102	-10%
01/12	15,052,589	11,551,124	-23%	24,760,597	20,271,082	-18%	9,708,008	8,719,958	-10%
16/12	15,266,659	11,583,512	-24%	25,165,360	20,404,943	-19%	9,898,701	8,821,431	-11%
01/01	15,328,684	11,587,142	-24%	25,302,993	20,454,986	-19%	9,974,309	8,867,844	-11%
16/01	15,344,251	11,588,150	-24%	25,335,799	20,479,651	-19%	9,991,548	8,891,501	-11%
01/02	15,346,551	11,590,426	-24%	25,353,855	20,503,672	-19%	10,007,304	8,913,246	-11%
16/02	15,344,467	11,591,897	-24%	25,362,703	20,516,987	-19%	10,018,236	8,925,090	-11%
01/03	15,346,024	11,593,399	-24%	25,374,033	20,528,816	-19%	10,028,009	8,935,417	-11%
16/03	15,346,865	11,595,528	-24%	25,375,204	20,536,728	-19%	10,028,339	8,941,200	-11%
01/04	15,354,279	11,540,812	-25%	25,384,875	20,542,304	-19%	10,030,596	9,001,492	-10%

Source: UNICA.

Table 8. Bi-weekly anhydrous ethanol production, ACCUMULATED - results for the South-Central region

Bi-weekly period	ANHYDROUS ETHANOL (m ³)								
	São Paulo State			South-Central region			Others states		
	2010/2011	2011/2012	Var. (%)	2010/2011	2011/2012	Var. (%)	2010/2011	2011/2012	Var. (%)
16/02	0	0	0%	18	0	-100%	18		
01/03	0	0	0%	1,093	0	-100%	1,093		
16/03	1,902	0	-100%	16,530	0	-100%	14,628		
01/04	14,275	233	-98%	41,256	3,901	-91%	26,981	3,668	-86%
16/04	82,071	33,627	-59%	130,182	60,139	-54%	48,111	26,512	-45%
01/05	302,099	211,120	-30%	425,815	336,107	-21%	123,716	124,987	1%
16/05	570,674	547,545	-4%	808,998	843,136	4%	238,324	295,591	24%
01/06	920,487	973,237	6%	1,299,406	1,472,779	13%	378,919	499,542	32%
16/06	1,250,221	1,285,114	3%	1,776,540	1,945,225	9%	526,319	660,111	25%
01/07	1,607,222	1,692,642	5%	2,281,487	2,548,672	12%	674,265	856,030	27%
16/07	1,938,425	2,104,663	9%	2,767,631	3,163,990	14%	829,206	1,059,327	28%
01/08	2,308,762	2,558,415	11%	3,310,261	3,849,025	16%	1,001,499	1,290,610	29%
16/08	2,692,130	2,961,059	10%	3,871,108	4,497,189	16%	1,178,978	1,536,130	30%
01/09	3,118,280	3,423,351	10%	4,486,929	5,233,357	17%	1,368,649	1,810,006	32%
16/09	3,512,936	3,861,669	10%	5,066,740	5,899,236	16%	1,553,804	2,037,567	31%
01/10	3,823,186	4,283,534	12%	5,537,297	6,562,953	19%	1,714,111	2,279,419	33%
16/10	4,116,480	4,570,585	11%	6,000,908	7,024,963	17%	1,884,428	2,454,378	30%
01/11	4,463,222	4,809,441	8%	6,506,670	7,417,651	14%	2,043,448	2,608,210	28%
16/11	4,742,488	4,956,446	5%	6,905,200	7,704,910	12%	2,162,712	2,748,464	27%
01/12	4,972,694	4,998,009	1%	7,220,191	7,801,802	8%	2,247,497	2,803,793	25%
16/12	5,074,425	4,996,369	-2%	7,359,483	7,819,640	6%	2,285,058	2,823,271	24%
01/01	5,106,518	4,985,960	-2%	7,412,724	7,818,793	5%	2,306,206	2,832,833	23%
16/01	5,131,339	4,963,789	-3%	7,443,892	7,795,769	5%	2,312,553	2,831,980	22%
01/02	5,136,531	4,902,265	-5%	7,447,419	7,728,543	4%	2,310,888	2,826,278	22%
16/02	5,131,777	4,870,311	-5%	7,437,960	7,683,738	3%	2,306,183	2,813,427	22%
01/03	5,131,573	4,856,638	-5%	7,437,050	7,637,904	3%	2,305,477	2,781,266	21%
16/03	5,131,493	4,817,814	-6%	7,429,858	7,560,423	2%	2,298,365	2,742,609	19%
01/04	5,118,753	4,755,181	-7%	7,413,422	7,466,194	1%	2,294,669	2,711,013	18%

Source: UNICA. Note: anhydrous ethanol production incorporates reprocessing, that is, the final amount refers to the direct production of anhydrous ethanol plus the converted volume of hydrous into anhydrous ethanol.

Table 9. Bi-weekly hydrous ethanol production, ACCUMULATED - results for the South-Central region

Bi-weekly period	HYDROUS ETHANOL (m ³)								
	São Paulo State			South-Central region			Others states		
	2010/2011	2011/2012	Var. (%)	2010/2011	2011/2012	Var. (%)	2010/2011	2011/2012	Var. (%)
16/02	2,829			5,610		-100%	2,781		
01/03	10,206			17,114		-100%	6,908		
16/03	39,630	1,188	-97%	86,128	7,112	-92%	46,498	5,924	-87%
01/04	140,496	26,335	-81%	236,115	66,913	-72%	95,619	40,578	-58%
16/04	592,134	89,562	-85%	929,553	196,354	-79%	337,419	106,792	-68%
01/05	1,198,890	296,868	-75%	1,875,109	569,628	-70%	676,219	272,760	-60%
16/05	1,846,417	741,087	-60%	2,940,931	1,329,842	-55%	1,094,514	588,755	-46%
01/06	2,577,863	1,346,294	-48%	4,151,629	2,437,310	-41%	1,573,766	1,091,016	-31%
16/06	3,262,981	1,859,809	-43%	5,378,437	3,415,723	-36%	2,115,456	1,555,914	-26%
01/07	4,016,102	2,439,600	-39%	6,737,831	4,529,219	-33%	2,721,729	2,089,619	-23%
16/07	4,787,077	2,981,945	-38%	8,110,899	5,560,174	-31%	3,323,822	2,578,229	-22%
01/08	5,630,202	3,525,254	-37%	9,572,211	6,606,632	-31%	3,942,009	3,081,378	-22%
16/08	6,395,545	4,024,450	-37%	10,938,379	7,581,778	-31%	4,542,834	3,557,328	-22%
01/09	7,208,123	4,533,423	-37%	12,439,027	8,589,687	-31%	5,230,904	4,056,264	-22%
16/09	7,946,153	5,009,275	-37%	13,750,175	9,537,433	-31%	5,804,022	4,528,158	-22%
01/10	8,488,065	5,518,884	-35%	14,778,939	10,499,831	-29%	6,290,874	4,980,947	-21%
16/10	8,945,425	5,847,264	-35%	15,585,057	11,141,826	-29%	6,639,632	5,294,562	-20%
01/11	9,458,739	6,153,243	-35%	16,452,860	11,716,653	-29%	6,994,121	5,563,410	-20%
16/11	9,819,213	6,414,728	-35%	17,062,278	12,178,366	-29%	7,243,065	5,763,638	-20%
01/12	10,079,895	6,553,115	-35%	17,540,406	12,469,280	-29%	7,460,511	5,916,165	-21%
16/12	10,192,234	6,587,143	-35%	17,805,877	12,585,303	-29%	7,613,643	5,998,160	-21%
01/01	10,222,166	6,601,182	-35%	17,890,269	12,636,193	-29%	7,668,103	6,035,011	-21%
16/01	10,212,912	6,624,361	-35%	17,891,907	12,683,882	-29%	7,678,995	6,059,521	-21%
01/02	10,210,020	6,688,161	-34%	17,906,436	12,775,129	-29%	7,696,416	6,086,968	-21%
16/02	10,212,690	6,721,586	-34%	17,924,743	12,833,249	-28%	7,712,053	6,111,663	-21%
01/03	10,214,451	6,736,761	-34%	17,936,983	12,890,912	-28%	7,722,532	6,154,151	-20%
16/03	10,215,372	6,777,714	-34%	17,945,346	12,976,305	-28%	7,729,974	6,198,591	-20%
01/04	10,235,526	6,785,631	-34%	17,971,453	13,076,110	-27%	7,735,927	6,290,479	-19%

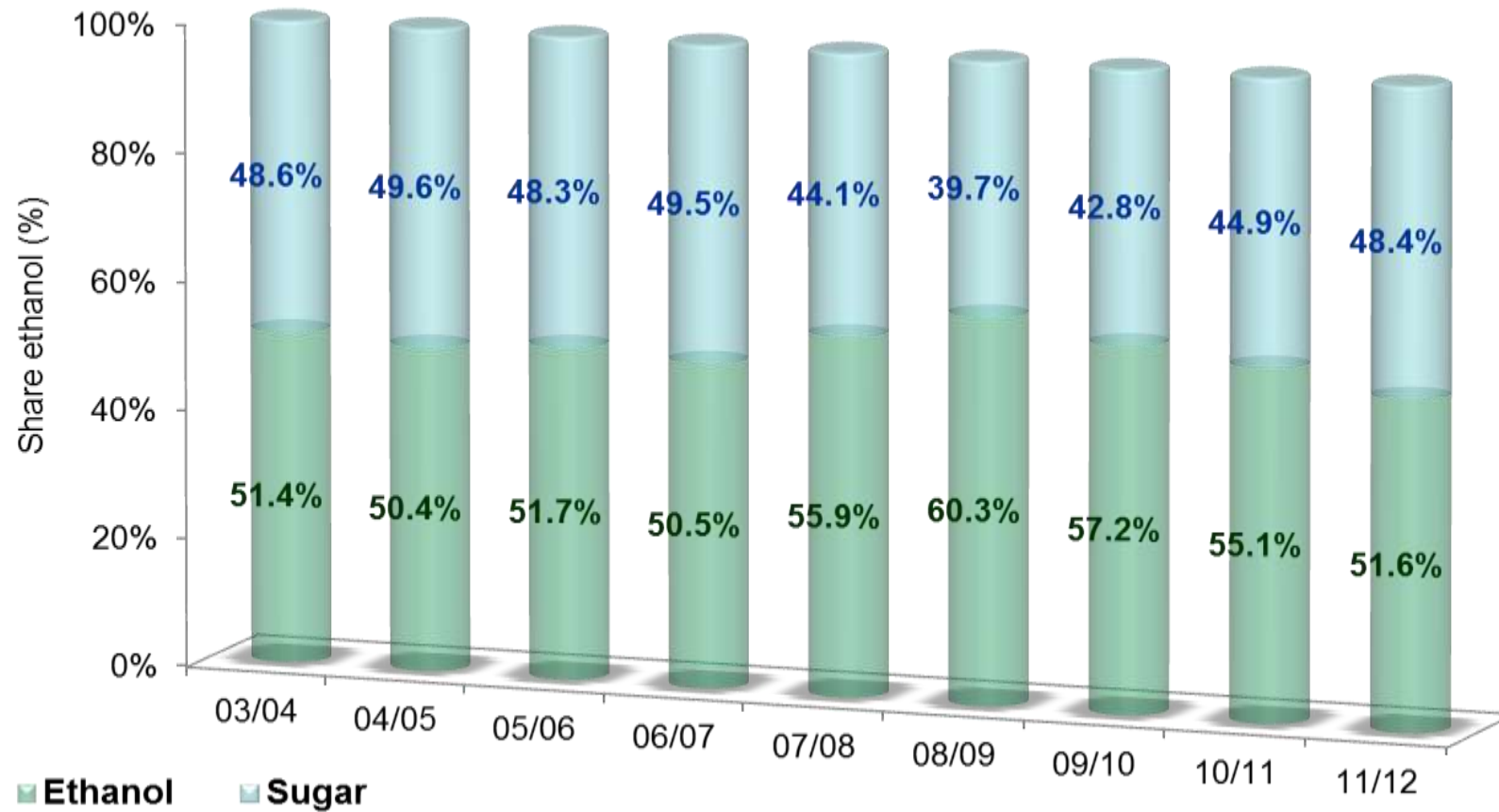
Source: UNICA. Note: hydrous ethanol production incorporates reprocessing, that is, the final amount refers to the direct production of hydrous ethanol plus the converted volume of anhydrous into hydrous ethanol.

Table 10. Bi-weekly ethanol mix (%) South-Central region

Bi-weekly period	ETHANOL MIX (%)					
	São Paulo state		South-Central region		Others states	
	2010/11	2011/12	2010/11	2011/12	2010/11	2011/12
01/04	60.09	64.03	62.69	65.58	78.71	66.64
16/04	58.95	68.30	60.62	65.60	64.23	62.89
01/05	53.42	61.38	56.74	63.64	64.81	67.24
16/05	51.95	54.18	55.63	56.95	63.36	62.06
01/06	51.41	50.23	55.26	53.90	63.60	60.38
16/06	50.18	49.20	54.45	53.77	62.30	61.34
01/07	50.03	47.45	54.16	51.73	61.69	58.97
16/07	50.45	45.85	54.46	50.82	61.63	59.82
01/08	50.16	44.57	53.87	49.89	60.80	59.59
16/08	49.26	44.57	53.16	49.80	60.24	58.40
01/09	50.02	44.01	53.64	48.85	59.78	56.75
16/09	50.51	44.26	53.60	48.70	59.03	56.11
01/10	51.05	44.08	55.20	48.16	61.86	55.04
16/10	54.84	45.93	57.85	50.20	62.85	56.89
01/11	50.80	48.61	53.67	51.58	59.28	55.99
16/11	50.23	46.01	52.79	48.88	57.95	52.81
01/12	53.50	54.09	55.53	55.40	59.21	56.59
16/12	63.46	56.77	64.12	60.01	64.88	61.11

Source: UNICA.

Use of sugarcane in South-Central region. Values in %.



Source: UNICA.

Table 11. Bi-weekly sugarcane quality index (kg of TRS per ton of sugarcane) for South-Central region

Bi-weekly period	kg of TRS/ ton of sugarcane					
	São Paulo state		South-Central region		Others states	
	2010/11	2011/12	2010/11	2011/12	2010/11	2011/12
01/04	98.23	98.89	98.09	101.27	100.74	102.97
16/04	104.64	88.44	104.54	92.54	104.32	97.06
01/05	121.11	99.78	120.26	102.37	118.24	106.81
16/05	126.62	113.52	125.73	114.25	123.90	115.60
01/06	129.22	126.10	128.98	126.92	128.46	128.38
16/06	134.38	130.69	133.51	131.07	131.93	131.70
01/07	139.98	132.94	139.72	133.68	139.25	134.95
16/07	148.60	136.00	146.64	135.96	143.25	135.89
01/08	148.71	140.58	147.90	141.70	146.41	143.78
16/08	153.90	143.87	152.92	143.48	151.19	142.85
01/09	160.21	150.41	159.21	149.67	157.54	148.48
16/09	161.17	152.08	159.77	151.93	157.37	151.68
01/10	172.91	157.00	169.49	156.20	164.28	154.89
16/10	140.13	164.05	142.50	160.15	146.62	154.41
01/11	144.98	138.88	144.71	138.34	144.18	137.54
16/11	134.37	143.10	133.50	140.45	131.76	136.97
01/12	134.32	132.46	131.58	128.57	126.91	125.25
16/12	126.89	144.26	122.18	137.26	117.12	135.03

Source: UNICA.

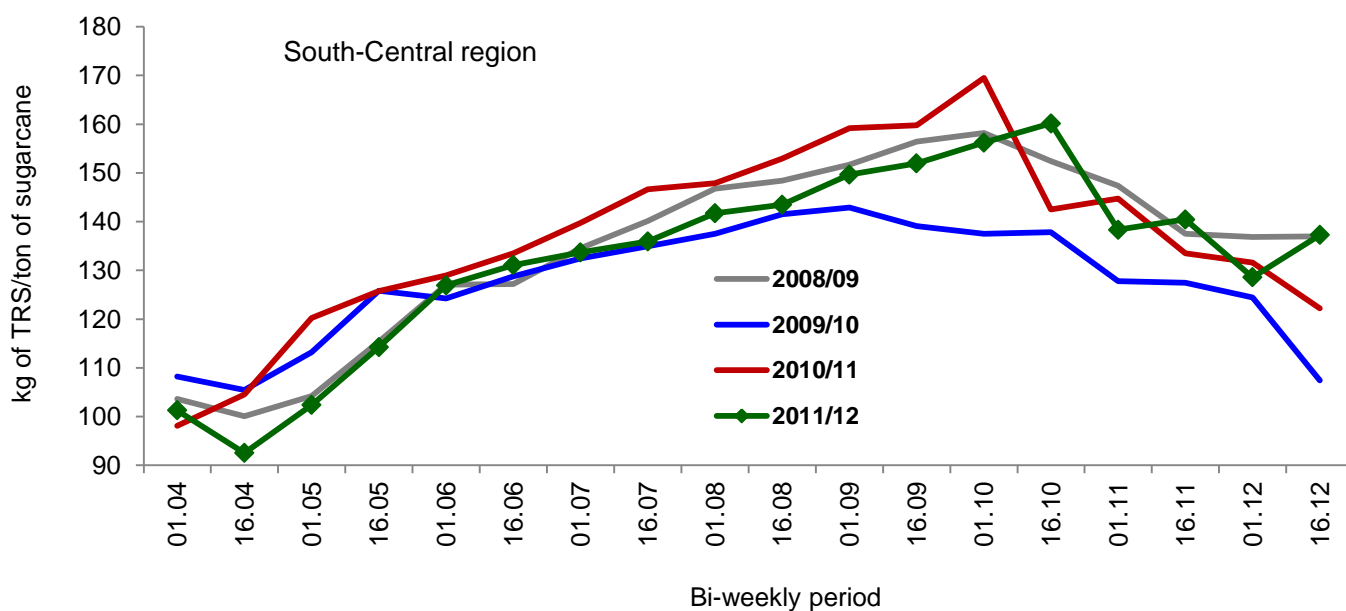


Table 12. Historical series of sugarcane quality (kg of TRS per ton of sugarcane) and the number of new mills, per harvest season, in South-Central region.

Harvest season	Average TRS (kg TRS/ ton of sugarcane)	Number of new mills
2007/2008	143.63	25
2008/2009	140.11	30
2009/2010	129.56	19
2010/2011	140.50	10
2011/2012	137.54	3
2012/2013 - e	140.00	2

Source: UNICA. Note: "e" - estimate.

Table 13. Ethanol sales by mills in South-Central region, per ethanol type and destination (m³).

Product	Month	Total		External market		Domestic market	
		2010/11	2011/12	2010/11	2011/12	2010/11	2011/12
Total ethanol	Apr	1,850,693	1,126,450	97,643	16,499	1,753,050	1,109,951
	May	2,144,733	1,830,070	204,400	108,214	1,940,333	1,721,856
	Jun	2,203,838	2,172,395	250,156	228,404	1,953,682	1,943,991
	Jul	2,401,675	2,082,153	232,358	299,610	2,169,317	1,782,543
	Aug	2,367,281	2,047,911	206,998	207,357	2,160,283	1,840,554
	Sep	2,359,094	1,857,473	185,991	190,879	2,173,103	1,666,594
	Oct	2,310,428	1,785,258	190,834	240,870	2,119,594	1,544,388
	Nov	2,165,246	1,755,822	128,703	238,180	2,036,543	1,517,642
	Dec	2,221,536	1,522,438	108,333	111,384	2,113,203	1,411,054
	Jan	1,901,220	1,283,428	81,798	42,445	1,819,422	1,240,983
	Feb	1,752,304	1,329,619	46,294	52,172	1,706,010	1,277,447
	Mar	1,508,056	1,643,222	27,627	113,756	1,480,429	1,529,466
	Total		25,186,104	20,436,239	1,761,135	1,849,770	23,424,969
Anhydrous ethanol	Apr	468,220	600,360	45,517	793	422,703	599,567
	May	617,093	689,833	68,470	37,655	548,623	652,178
	Jun	597,295	675,265	66,507	39,000	530,788	636,265
	Jul	687,807	722,977	55,653	82,638	632,154	640,339
	Aug	625,244	708,027	38,195	55,814	587,049	652,213
	Sep	594,706	716,532	31,004	70,438	563,702	646,094
	Oct	632,059	642,564	58,156	85,318	573,903	557,246
	Nov	596,388	733,358	32,336	159,896	564,052	573,462
	Dec	658,092	658,122	50,568	86,870	607,524	571,252
	Jan	616,748	509,421	32,367	28,766	584,381	480,655
	Feb	588,813	511,266	28,959	51,952	559,854	459,314
	Mar	676,078	675,178	14,285	96,187	661,793	578,991
	Total		7,358,543	7,842,903	522,017	795,327	6,836,526
Hydrous ethanol	Apr	1,382,473	526,090	52,126	15,706	1,330,347	510,384
	May	1,527,640	1,140,237	135,930	70,559	1,391,710	1,069,678
	Jun	1,606,543	1,497,130	183,649	189,404	1,422,894	1,307,726
	Jul	1,713,868	1,359,176	176,705	216,972	1,537,163	1,142,204
	Aug	1,742,037	1,339,884	168,803	151,543	1,573,234	1,188,341
	Sep	1,764,388	1,140,941	154,987	120,441	1,609,401	1,020,500
	Oct	1,678,369	1,142,694	132,678	155,552	1,545,691	987,142
	Nov	1,568,858	1,022,464	96,367	78,284	1,472,491	944,180
	Dec	1,563,444	864,316	57,765	24,514	1,505,679	839,802
	Jan	1,284,472	774,007	49,431	13,679	1,235,041	760,328
	Feb	1,163,491	818,353	17,335	220	1,146,156	818,133
	Mar	831,978	968,044	13,342	17,569	818,636	950,475
	Total		17,827,561	12,593,336	1,239,118	1,054,443	16,588,443

Source: UNICA. Note: data includes ethanol for fuel, industrial purposes, beverage production and the volume destined to own consumption by mills. It also includes the imports by producers and non-producers.

Table 14. Monthly sales by mills in South-Central region - ethanol for other uses (m³)

Product	Month	Total			Anhydrous ethanol			Hydrous ethanol		
		2010/11	2011/12	Var. (%)	2010/11	2011/12	Var. (%)	2010/11	2011/12	Var. (%)
Ethanol for other uses	Apr	81,228	49,295	↓ -39.31%	28,632	10,566	↓ -63.10%	52,596	38,729	↓ -26.37%
	May	80,811	66,192	↓ -18.09%	23,139	9,744	↓ -57.89%	57,672	56,448	↓ -2.12%
	Jun	77,517	89,591	↑ 15.58%	20,338	11,577	↓ -43.08%	57,179	78,014	↑ 36.44%
	Jul	84,295	83,805	↓ -0.58%	19,168	12,511	↓ -34.73%	65,127	71,294	↑ 9.47%
	Aug	93,754	93,814	↑ 0.06%	20,058	14,820	↓ -26.11%	73,696	78,994	↑ 7.19%
	Sep	104,413	82,662	↓ -20.83%	21,527	14,330	↓ -33.43%	82,886	68,332	↓ -17.56%
	Oct	111,580	90,849	↓ -18.58%	17,683	12,994	↓ -26.52%	93,897	77,855	↓ -17.08%
	Nov	89,834	79,621	↓ -11.37%	13,230	15,354	↑ 16.05%	76,604	64,267	↓ -16.10%
	Dec	80,519	80,361	↓ -0.20%	13,138	13,640	↑ 3.82%	67,381	66,721	↓ -0.98%
	Jan	84,149	72,856	↓ -13.42%	17,408	10,494	↓ -39.72%	66,741	62,362	↓ -6.56%
	Feb	69,426	71,189	↑ 2.54%	8,835	10,068	↑ 13.96%	60,591	61,121	↑ 0.87%
	Mar	70,226	89,026	↑ 26.77%	16,716	15,625	↓ -6.53%	53,510	73,401	↑ 37.17%
Total		1,027,752	949,261	↓ -7.64%	219,872	151,723	↓ -30.99%	807,880	797,538	↓ -1.28%

Source: UNICA. Note: ethanol sales destined to the domestic market shown in Table 13, include the volume of ethanol fuel traded, ethanol for other purposes (shown in the table above), losses and own use by mills.

Table 15. Sugar exports by South-Central region of Brazil (thousand tonnes).

Month	Harvest season		Var. (%)
	2010/2011	2011/2012	
April	1,069	958	↓ -10.37%
May	1,916	1,535	↓ -19.86%
June	2,472	2,472	↓ -0.01%
July	2,852	3,030	↑ 6.23%
August	3,194	3,303	↑ 3.42%
September	3,331	2,772	↓ -16.78%
October	2,752	2,122	↓ -22.90%
November	2,628	2,017	↓ -23.23%
Dezember	1,564	1,356	↓ -13.27%
January	904	817	↓ -9.64%
February	974	913	↓ -6.28%
March	985	825	↓ -16.31%
Total	24,640	22,119	↓ -10.23%

Source: Secex. Elaboration: UNICA.

Table 16. Ethanol imports by South-Central region of Brazil (m³).

Month	Volume (m ³)
Apr-11	123,604
May-11	73,795
Jun-11	0
Jul-11	0
Aug-11	32,894
Sep-11	0
Oct-11	114,928
Nov-11	104,404
Dec-11	249,952
Jan-12	179,076
Feb-12	102,269
Mar-12	27,971
Total	1,008,893

Source: UNICA.

Table 17. Conversion of anhydrous ethanol into hydrous ethanol in South-Central region of Brazil (m³).

Month	Volume (m ³)
Apr-11	1,742
May-11	76
Jun-11	2,518
Jul-11	70
Aug-11	183
Sep-11	185
Oct-11	239
Nov-11	1,809
Dec-11	17,290
Jan-12	98,450
Feb-12	95,442
Mar-12	171,800
Total	389,804

Source: UNICA.

Table 18. Ethanol supply & demand balance in South-Central region of Brazil. Volume in thousand m³.

	Anhydrous ethanol	Hydrous ethanol	Total
Stock in April 1, 2011	359	386	745
<hr/>			
Production during 2011/2012 harvest season - beginning in 04/01/2011*	8,470	13,013	21,483
Sales to domestic market - April to March of 2012	7,043	11,519	18,562
<i>Sales of fuel ethanol</i>	6,865	10,572	17,437
<i>Sales of ethanol for industrial purposes and to own consumption by mills</i>	178	948	1,126
Sales to external market - April to March of 2012	795	1,054	1,849
<hr/>			
Stock in April 1, 2012	991	825	1,816

Source: UNICA. Note: *production include the volume of hydrous ethanol converted into anhydrous ethanol (vice versa) and the imports by producers and non-producers.

Table 19. Sugar supply & demand balance in South-Central region of Brazil. Values in thousand tons.

	2010/2011	2011/2012	Var. (%)
Initial stock	1,351.45	1,144.25	↓ -15.33%
Production	33,500.73	31,304.17	↓ -6.56%
Exports*	24,639.75	22,119.31	↓ -10.23%
Domestic market**	9,068.18	8,623.58	↓ -4.90%
Final stock	1,144.25	1,705.54	↑ 49.05%

Source: UNICA and Secex. Note: *export data provided by Secex; **domestic market calculated by the difference between the sum of the initial stock and production, minus sales to external market and the stock registered at the end of the harvest season.

Table 20. Average prices of TRS and of the sugarcane delivered by growers in São Paulo state. Nominal values.

Harvest season	Kg of TRS/ ton. of sugarcane	R\$/ton. of sugarcane	R\$/ton. of sugarcane	
			Sugarcane destined to sugar production	Sugarcane destined to ethanol production
2007/2008	146.57	35.81	33.47	37.85
2008/2009	143.25	39.85	39.89	39.83
2009/2010	132.75	46.36	52.86	40.75
2010/2011	143.36	57.66	63.19	52.52
2011/2012	140.17	70.34	75.57	64.49

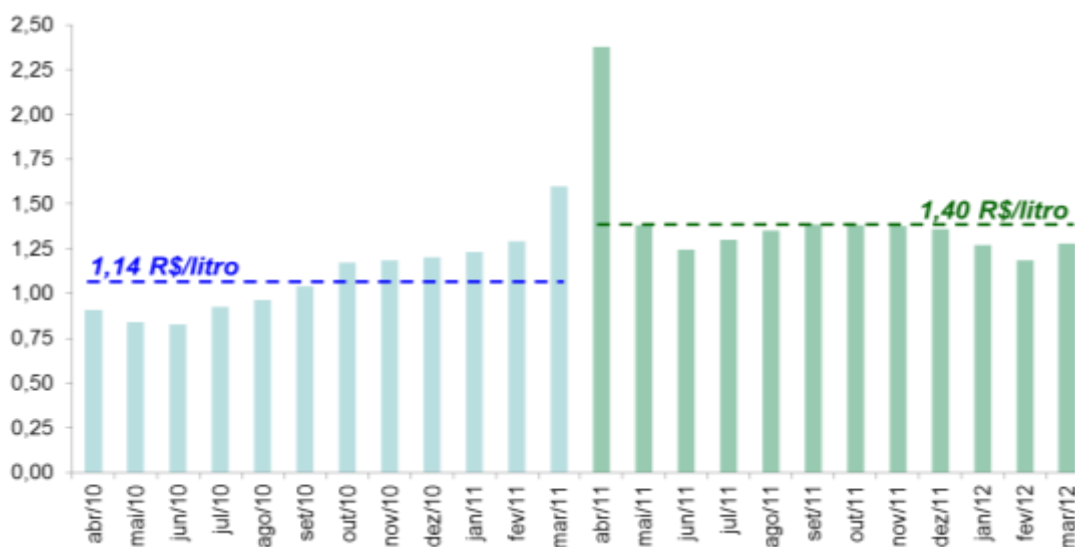
Source: Consecana and Orplana. Elaboration: UNICA.

Monthly prices received by producers in São Paulo state - ethanol

Fuel hydrous ethanol (R\$/liter)



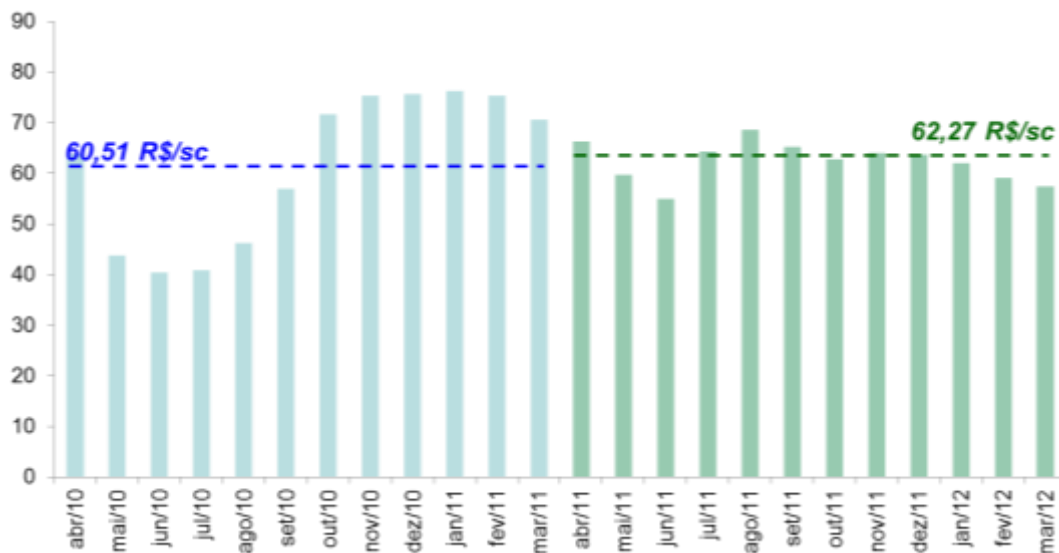
Fuel anhydrous ethanol (R\$/liter)



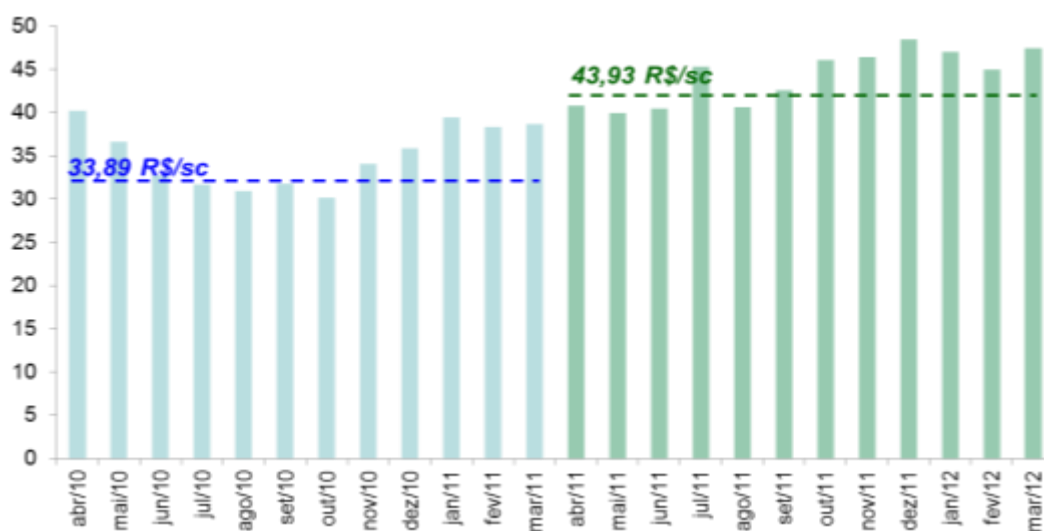
Source: CEPEA. Elaboration: UNICA. Note: prices minus freight charges and taxes; highlighted values refer to the average prices of the harvest season and they are calculated considering the trading curve published by Consecana; nominal values.

Monthly prices received by producers in São Paulo state - sugar

White sugar - domestic market (R\$/ 50 kg bag)



Raw sugar - external market (R\$/ 50 kg bag)



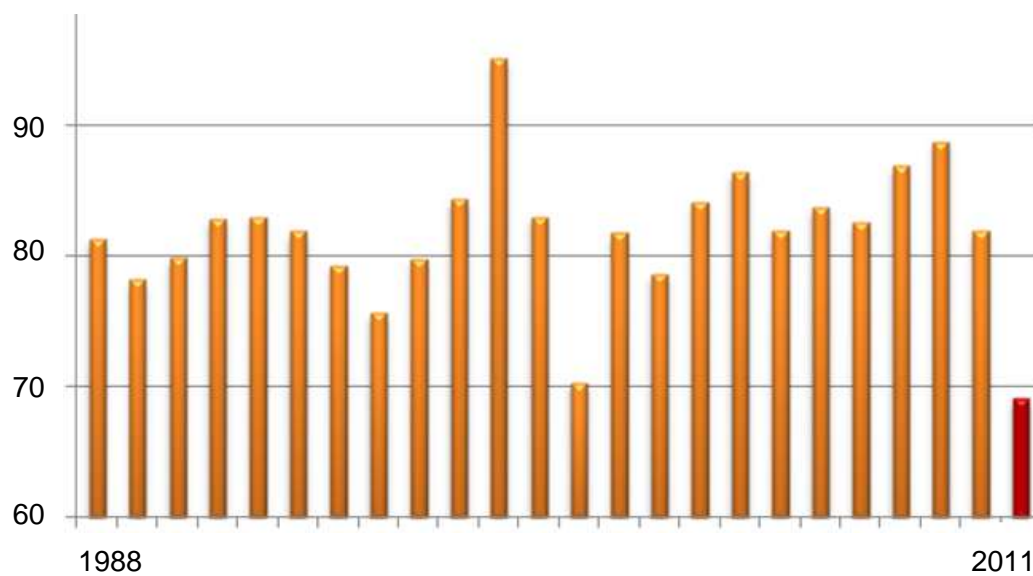
Source: CEPEA. Elaboration: UNICA. Note: prices minus freight charges but include taxes; highlighted values refer to the average prices of the harvest season and they are calculated considering the trading curve published by Consecana; nominal values.

Agricultural productivity in South-Central region of Brazil. Values in tonnes of sugarcane per hectare.

Agricultural productivity in 2011/2012 harvest season - South-Central region of Brazil

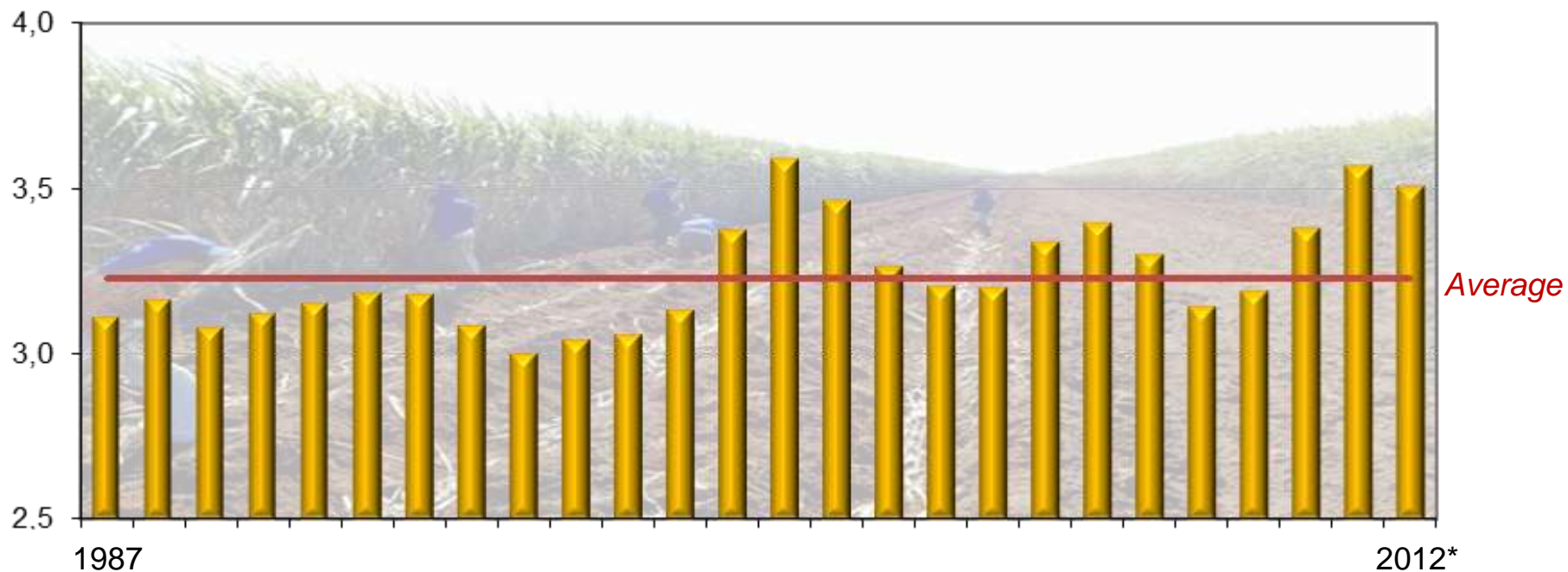


Historical average agricultural productivity, by calendar year - South-Central region of Brazil



Source: CTC-MUTUO

Historical age of sugarcane field - South-Central region of Brazil. Values in years.



Source: CENSO - CTC

Staff:

Antônio de Pádua Rodrigues
Technical Director

Luciano Rodrigues
Economic Department Manager

Celma Ramalho Gaudêncio
Business Intelligence Analyst

Cezar Sallum
Planning Assistant

Cleber dos Santos Valin
Planning Assistant

Maria Andrade Pinheiro
Economic Analyst

Mariana Regina Zechin
Economic Analyst

Valdemir Nunes Machado
Systems Analyst

Data released in this report has been compiled and analyzed by UNICA, with figures provided by mills and by the following associations of producers from South-Central states:

- *Ethanol and sugar producers association in the state of Paraná (Alcopar);*
- *Bioenergy producers association of Mato Grosso do Sul (Biosul);*
- *Sugar and ethanol industries association in the state of Minas Gerais (SIAMIG);*
- *Association of ethanol industry of Goiás state (SIFAEG);*
- *Sugar and ethanol industry association of Mato Grosso (SINDALCOOL);*
- *Plants and distilleries society of Espírito Santo state (SUDES);*
- *“Fluminense” association of sugar and ethanol producers (SINDAAF).*

Data regarding weather and agricultural conditions has been provided by the Center for Sugarcane Technology (CTC).

This report has been prepared for informative purposes only and is available free of charge from www.unica.com.br/unicadata.

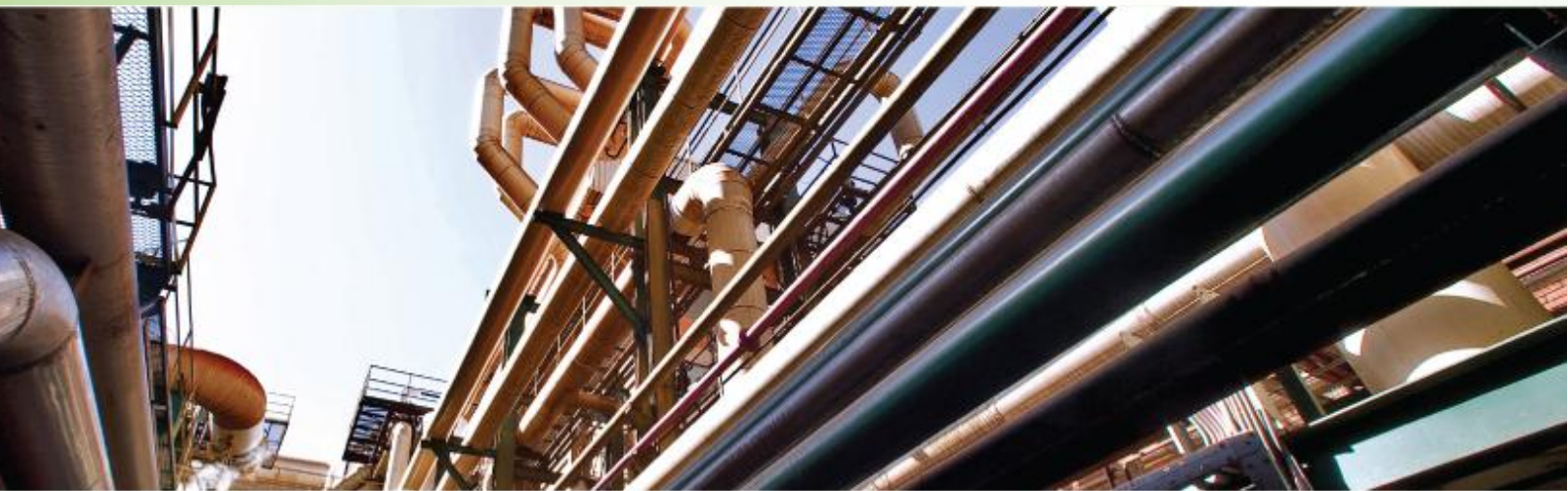
UNICA has endeavored to ensure that all data and information utilized are precise and obtained from credible sources. However, the organization is not responsible for decisions of any nature, financial or otherwise, that might be undertaken based on the contents of this report. Reproduction of this report, in whole or in part, in any form or by any means, is permitted only with The Brazilian Sugarcane Industry Association (UNICA) credited as the source.



BRAZILIAN SUGARCANE INDUSTRY ASSOCIATION

ETHANOL • SUGAR • ENERGY

BRAZIL



BIOENERGIA
ALCOPAR / SIALPAR / SIAPAR



BioSul
Associação dos Produtores de Bioenergia
de Mato Grosso do Sul



Centro de Tecnologia
Canaveira



SIAMIG
BIOENERGIA - ETANOL - AÇÚCAR
Associação das Indústrias Sucroenergéticas de Minas Gerais



SINDALCOOL/MT
SINDICATO DAS INDÚSTRIAS SUCROALCOOLEIRAS
DO ESTADO DE MATO GROSSO

SINDAAF

SIFAEG

SINDICATO DA INDÚSTRIA DE FABRICAÇÃO
DE ETANOL DO ESTADO DE GOIÁS
GOIÁS ETHANOL INDUSTRY ASSOCIATION

SIFAÇUCAR

SINDICATO DA INDÚSTRIA DE FABRICAÇÃO
DE AÇÚCAR DO ESTADO DE GOIÁS
GOIÁS SUGAR INDUSTRY ASSOCIATION

SUDES